

Verein für
Association pour le
Associazione per il



medizinische Qualitätskontrolle
contrôle de qualité médical
controllo di qualità medico

Report

Differential Blood Smear H3

MQ 2015-1

Acknowledgements

The Mythic 18 analyzer was provided by the company Polymed. MQ employees conducted the measurements.

The ABX Micros CRP 200 instrument was provided to [sic: by] the company by Axonlabs. MQ employees conducted the measurements.

The findings of the KX21, XE-5000, ADVA 2120 devices and of the microscopic blood counts were generated by the Zentrallabor des Medizinbereichs Diagnostik HAD der Klinik für Hämatologie des Universitätsspitals Zürich (Central Laboratory of Medical Diagnostic HAD of the University Hospital Zurich Hematology Clinic). The lab is ISO/IEC 17025 certified (STS 445). Dr. Jeroen Goede is the responsible manager; Prof. MG Manz, M.D., the clinic director.

www.haematologie.usz.ch

For information regarding all analyses offered by the University Hospital of Zurich, see: www.uzl.usz.ch

(c) 2015 Verein für medizinische Qualitätskontrolle

Index

1	SAMPLE A	4
1.1	ABX Micros	4
1.2	Mythic	5
1.3	Sysmex KX21	6
1.4	Sysmex XE-5000	7
1.5	ADVIA 120	9
1.6	Differential Blood Smear	11
1.7	Summary of participant results	13
1.8	Qualab Codes	14
2	SAMPLE B	15
2.1	ABX Micros	15
2.2	Mythic	16
2.3	Sysmex KX21	17
2.4	Sysmex XE-5000	18
2.5	ADVIA 120	20
2.6	Differential Blood Smear	22
2.7	Summary of participant results	24
2.8	Qualab Codes	25

1 Sample A

1.1 ABX Micros



Findings MQ 2015-1 H3A

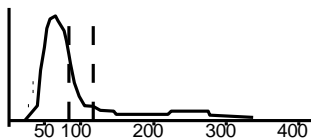
37 year old man

WBC :	13.4	H	$10^9/L$	MCV :	92.5	fL
RBC :	4.91		$10^{12}/L$	MCH :	29.4	pg
HGB :	144		g/L	MCHC:	318	g/L
HCT :	.454		L/L	RDW :	13.6	H %
PLT :	157		$10^9/L$	MPV :	7.0	fL
PCT :	.109		$10^{-2}L/L$	PDW :	14.9	%

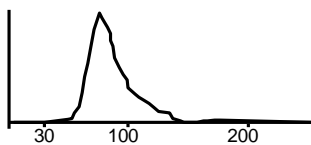
DIFF:

%LYM:	57.3	H	%	#LYM:	7.6	H	$10^9/L$
%MON:	14.3	H	%	#MON:	1.9	H	$10^9/L$
%GRA:	28.4	L	%	#GRA:	3.9		$10^9/L$

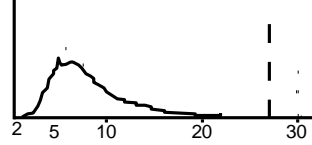
WBC



RBC



PLT



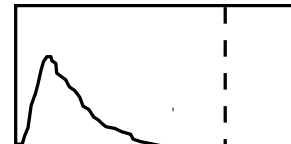
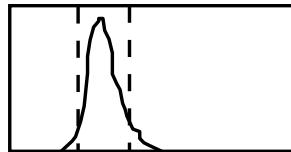
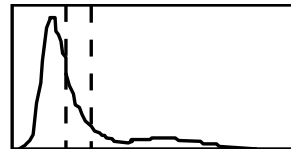
1.2 Mythic



Findings MQ 2015-1 H3A

37 year old man

WBC	13.3	H	10 ⁹ /l	3.5	/	10.0
LYM	6.9	H	10 ⁹ /l	1.2	/	3.2
MON	2.5	H	10 ⁹ /l	0.1	/	1.0
GRA	3.9		10 ⁹ /l	1.2	/	6.8
LYM%	51.9	H	%	17.0	/	48.0
MON%	19.1	H	%	2.0	/	10.0
GRA%	29.0	L	%	43.0	/	76.0
RBC	4.87		10 ¹² /l	4.00	/	5.70
HGB	145		g/l	140	/	180
HCT	0.440		l/l	0.420	/	0.540
MCV	90.3		fl	80.0	/	100.0
MCH	29.8		pg	26.0	/	34.0
MCHC	330		g/l	310	/	365
RDW	13.8		%	10.0	/	16.0
PLT	197		10 ⁹ /l	150	/	400
MPV	7.9		fl	7.0	/	11.0
PCT	0.156		cl/l	0.100	/	0.500
PDW	13.0		%	10.0	/	18.0



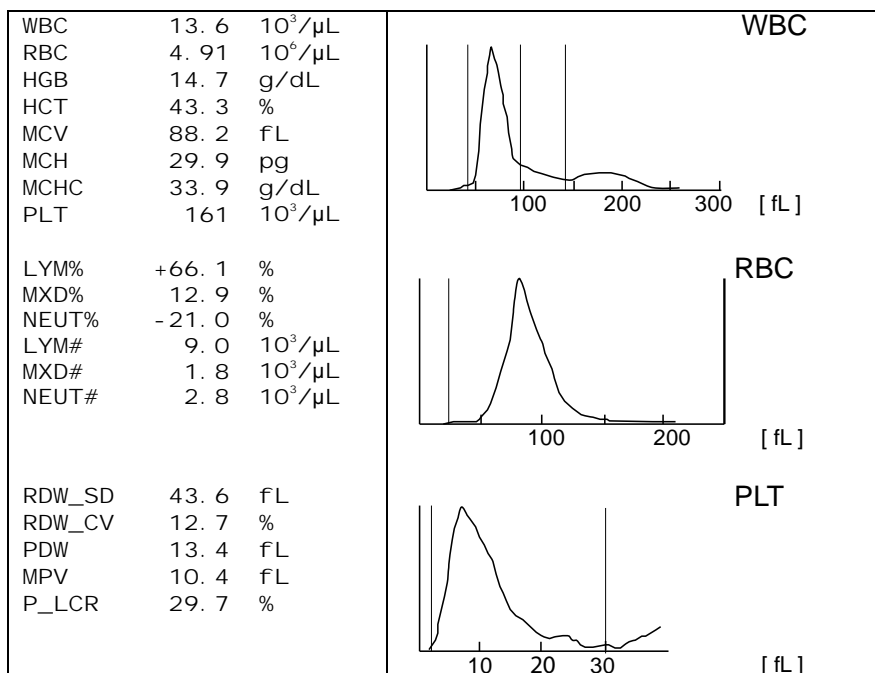
1.3 Sysmex KX21



Findings MQ 2014-4 H3A

37 year old man

Analysis	Result	Unit	Reference Value
Blood count			
Hemoglobin	147	g/l	134-170
Hematocrit	0.433	l/l	0.350-0.500
Erythrocytes	4.91	T/l	4.2-5.7
MCV	88.2	fl	80-100
MCH	29.9	pg	26-34
MCHC	* 339	g/l	310-360
Thrombocytes	12.7	%	11.0-14.8
MXD	161	G/l	143-400
Leukocytes	13.6	G/l	3.0-9.6
Leucocyte Differentiation			
Neutrophils	2.8	G/l	1.40-8.00
Lymphocytes	9.0	G/l	1.50-4.00



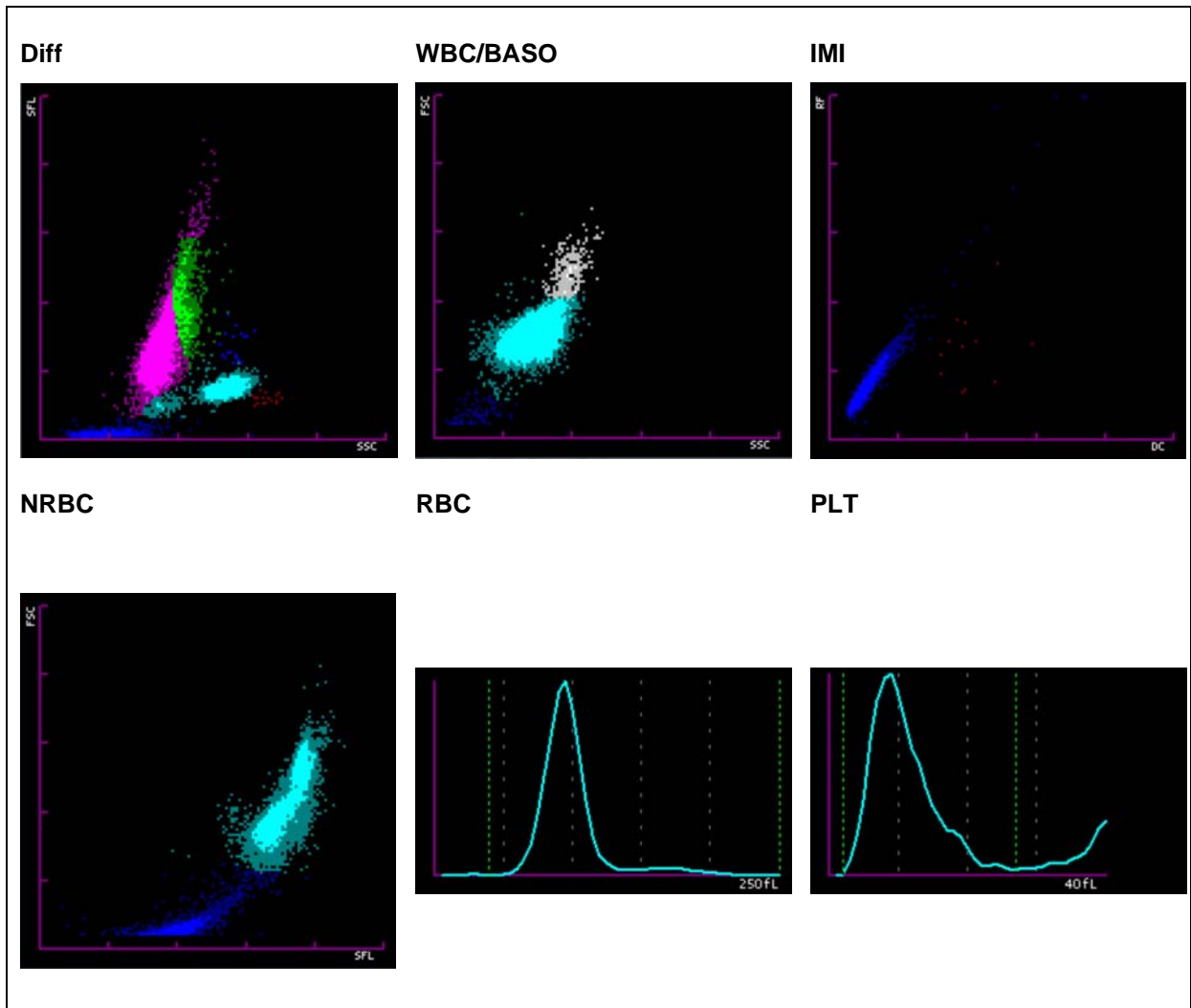
1.4 Sysmex XE-5000



Findings MQ 2015-1 H3A 37 year old man

Analysis	Result	Unit	Reference value
Blood Count			
Hemoglobin	152	g/l	134-170
Hematocrit	0.453	l/l	0.400-0.500
Erythrocytes	4.86	T/l	4.2-5.7
MCV	93.2	fl	80-100
MCH	31.3	pg	26-34
MCHC	336	g/l	310-360
Mikrocytes	13.0	%	11.0-14.8
Thrombocytes	167	G/l	143-400
Leucocytes	* 14.61	G/l	3.0-9.6
Leucocyte Differentiation			
Neutrophils	2.45	G/l	1.40-8.00
Monocytes	* 1.99	G/l	0.16-0.95
Eosinophils	0.03	G/l	0.00-0.70
Basophils	* 0.53	G/l	0.00-0.15
Lymphocytes	* 9.61	G/l	1.50-4.00
IG abs.	0.03	G/l	0.00-0.03
IG %	0.2	%	0.0-0.5
NRBC abs.	0.00	G/l	
NRBC	0.0	/100 Lc	

Findings HAD MQ 2015-1 H3A



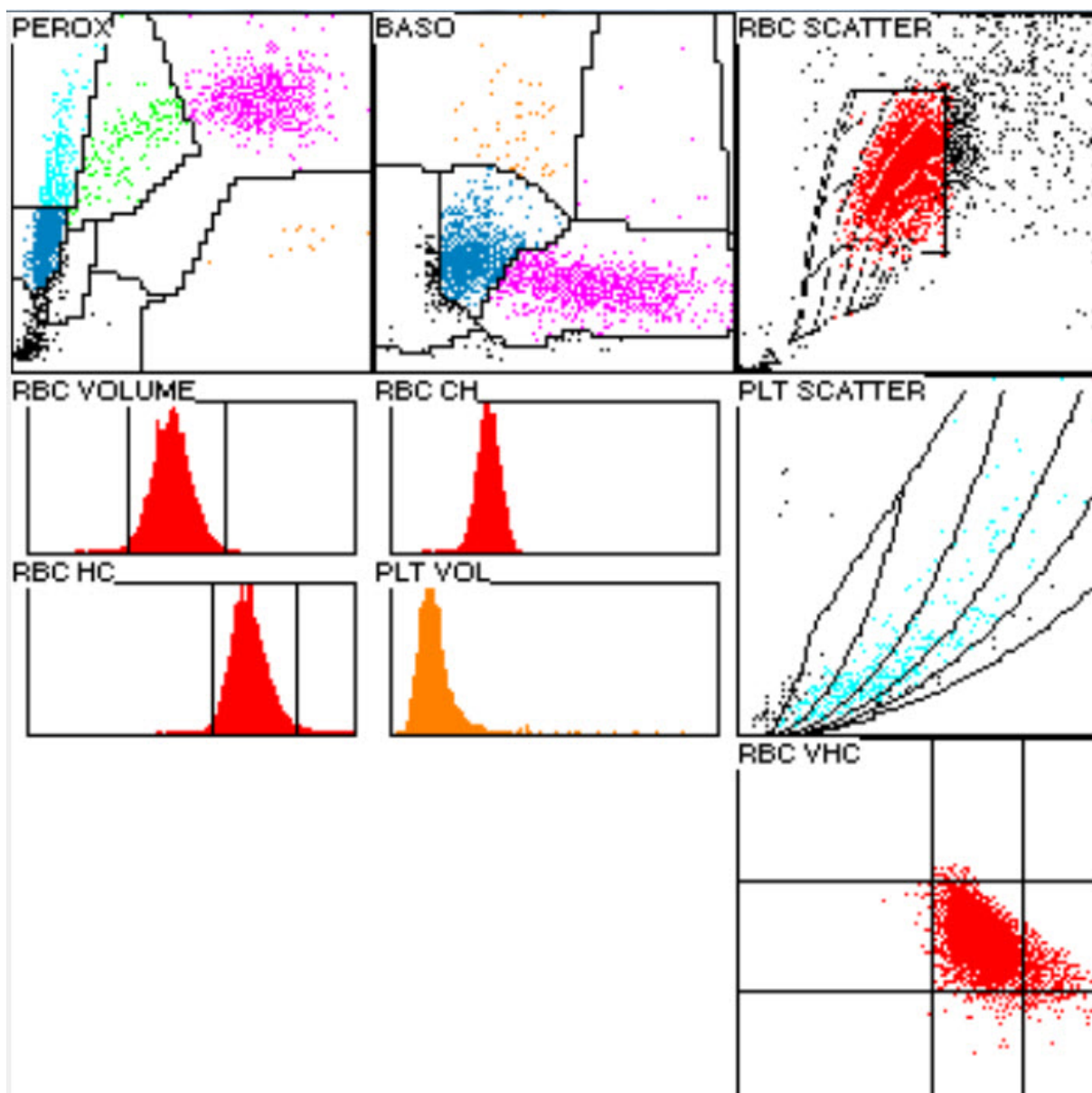
1.5 ADVIA 120



Findings MQ 2015-1 H3A

37 year old man

Analysis	Result	Unit	Reference value
Blood Count			
Hämoglobin	148	g/l	134-170
Hämatokrit	0.430	l/l	0.400-0.500
Erythrozyten	4.9	T/l	4.2-5.7
MCV	87.8	fl	80-100
MCH	30.2	pg	26-34
MCHC	344	g/l	310-360
Mikrozyten	0.7	%	0-2.0
Makrozyten	0.2	%	0-2.0
Hypochrome Ec	0.7	%	0-2.0
Hyperchrome Ec	1.8	%	0-2.0
RDW	13.2	%	11.0-14.8
Thrombozyten	166	G/l	143-400
Vd. L-SHIFT	0	+	Keine (0)
Leukozyten	* 14.65	G/l	3.0-9.6
Blutbild			
Neutrophile	3.28	G/l	1.40-8.00
Monozyten	0.65	G/l	0.16-0.95
Eosinophile	0.05	G/l	0.00-0.70
Basophile	* 0.24	G/l	0.00-0.15
Lymphozyten	* 8.79	G/l	1.50-4.00
LUC	* 11.3	%	0.0-4.0



1.6 Differential Blood Smear

Findings MQ 2015-1 H3A

37 year old man

Analysis	Result	Unit	Reference value
Neutrophils total	3.22	G/l	1.40-8.00
Monocytes	0.59	G/l	0.16-0.95
Eosinophils	0.07	G/l	0.00-0.70
Basophils	0.07	G/l	0.00-0.15
Lymphocytes	* 10.69	G/l	1.50-4.00
Neutrophils total	* 22.0	%	40.0-74.0
Neutrophils Band	7.0	%	0.0-20.0
Neutrophils Segmented	* 15.0	%	30.0-50.0
Monocytes	4.0	%	3.4-9.0
Eosinophils	0.5	%	0.0-7.0
Basophils	0.5	%	0.0-1.5
Lymphocytes	* 73.0	%	19.0-48.0
Plasmacells	0.0	%	0-0.5
Blasts	0.0	%	0
Promyelocytes	0.0	%	0
Myelocytes	0.0	%	0
Metamyelocytes	0.0	%	0
Nucleated Red Cells	0.0	/100 Lc	

Comment

The red blood count is normochromic and normocytic. No erythrocytic inclusions. Some neutrophils with coarse cytoplasmic granulation. Platelets are slightly anisocytic; giant forms rare in microscopy. Absolute lymphocytosis. At least half of the lymphocytes are significantly reactively altered (45% atypical lymphocytes probably reactive). Medium to large forms usually with dented nucleus, the nuclear chromatin is dense to granular - distinct nucleolus visible in isolated cases. The cytoplasmic border is medium broad to broad – darkly basophilic with perinuclear lightening. In addition, there are some very small form already undergoing apoptosis - these were also counted as atypical, probably reactive forms. In addition, slightly larger forms with azurophilic granules (<10%).

Dr. J. Goede / K. Schreiber

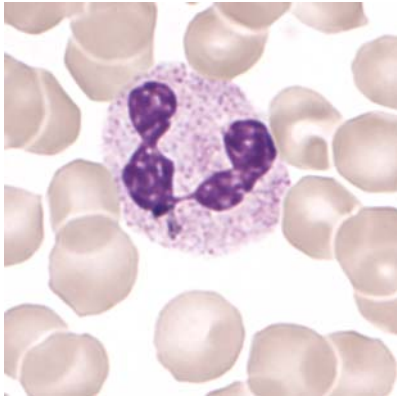


Abb 1. Neutrophil (Seg)

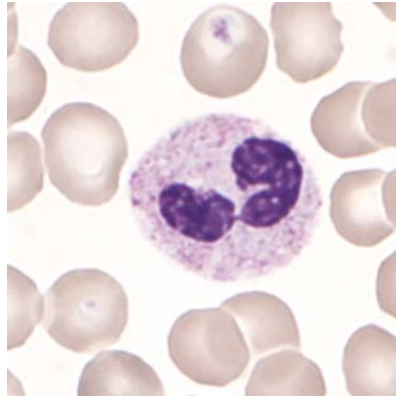


Abb 2. Neutrophil (Seg)

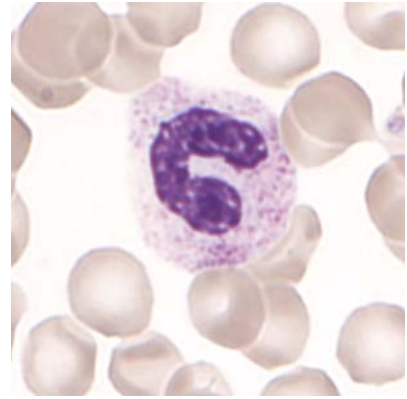


Abb 3. Neutrophil (Band)

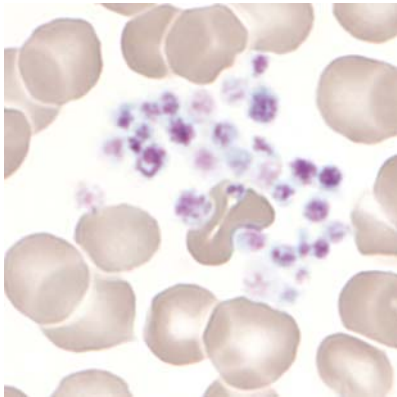


Abb 4. Thrombocytes

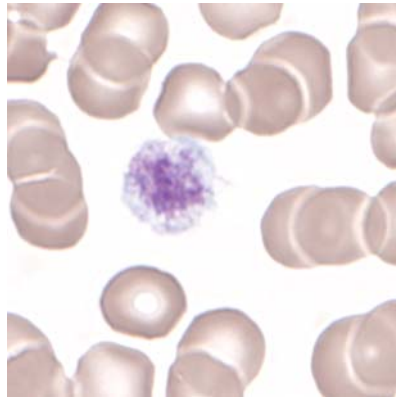


Abb 5. Macrothrombocyte

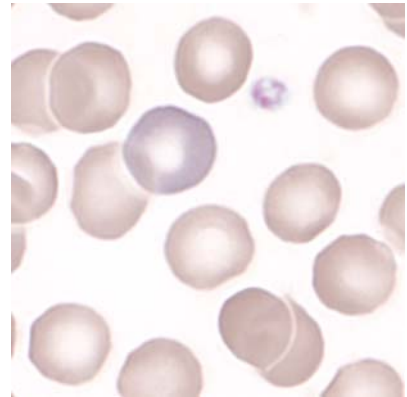


Abb 6. Polychromasia

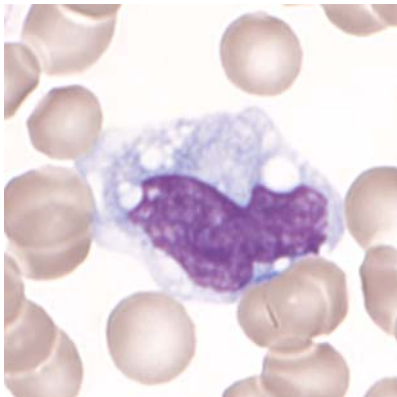


Abb 7. Monocyte

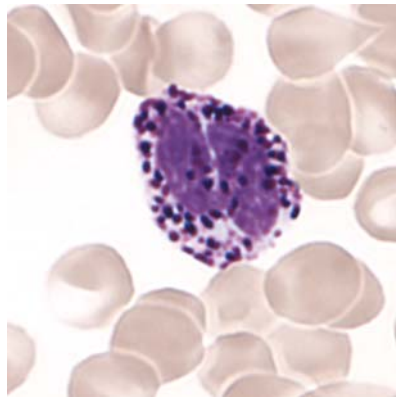


Abb 8. Basophil

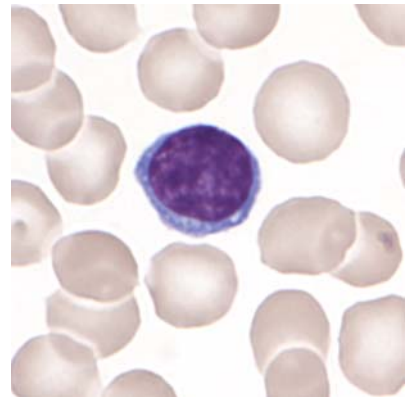


Abb 9. Lymphocyte (normal)

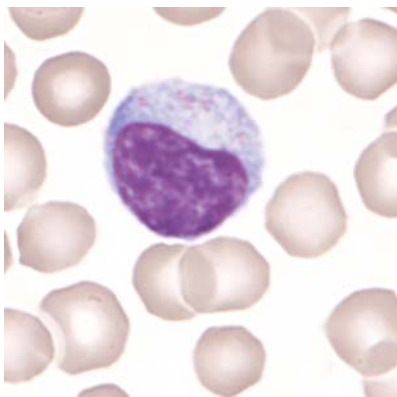


Abb 10. Lymphocyte (LGL)

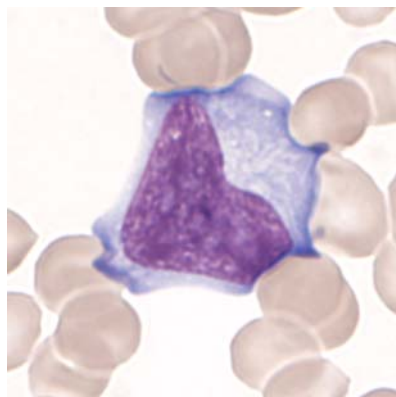


Abb 11. Lymphocyte (atypical, probably reactive)

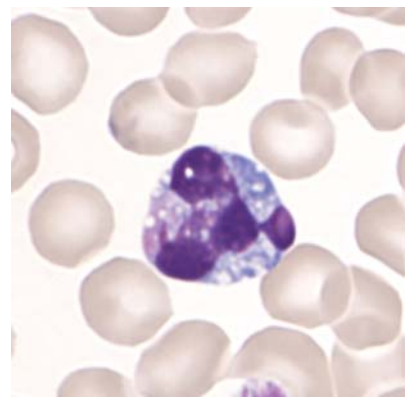


Abb 12. Apoptotic form of a lymphocyte

1.7 Summary of participant results

Leucozyte Differential H3-A

	0	1-4	5-9	10-19	20-29	30-39	40-49	50-59	60-69	70-79	>79
<i>Neutrophils Band</i>	3	37	153*	146	23	2					
<i>Neutrophils Segmented.</i>	3	4	48	244*	55	8			2		
<i>Eosinophils</i>	254*	109									
<i>Basophile</i>	243*	120	1								
<i>Monocytes</i>	36	168*	100	44	4	2	4	3	3		
<i>Lymphocytes</i>	2	1	5	14	20	12	17	25	106	149*	13
<i>Plasmacells</i>	339*	18		3	1		2		1		
<i>Blasts</i>	327*	12	7	4	3	4	2	5			
<i>Promyelocytes</i>	354*	5	3	2							
<i>Myelocytes</i>	348*	7	3	2		1	1	1	1		
<i>Metamyelozyten</i>	347*	12	1	3	1						
<i>Erythrocytes Nucleated</i>	353*	11									
<i>Unknown</i>	330*	10	3	11	3	4	3				
<i>Smudge cells</i>	318*	23	15	5	1	1		1			

Evaluation H3-A

	<i>light</i>	<i>medium</i>	<i>strong</i>		<i>light</i>	<i>medium</i>	<i>strong</i>
<i>Hypersegmentation</i>	12	1		<i>Hypochromic Ec</i>	33	5	
<i>Pelger-Hüet Anomaly</i>	4			<i>Polychromatic Ec</i>	52	8	
<i>Coarse Granulation</i>	99	23	2	<i>Anisocytes</i>	140	28	
<i>Basophilic Stripling</i>	14	2	2	<i>Mikrocytes</i>	59	10	
<i>Vacuoles</i>	50	12	3	<i>Makrocytes</i>	31	5	
<i>Reaktive Lymphocytes</i>	31	71	165	<i>Megalocytes</i>	1	1	
<i>Atypical Lymphocytes</i>	2	8	14	<i>Poikilocytosis</i>	65	7	1
<i>Others</i>	8	7	11	<i>Ovalocytes</i>	26	1	
				<i>Target Cells</i>	7		
				<i>Akanthocytes</i>	7	1	
<i>Anisocytosis</i>	99*	20	4	<i>Echinocytes</i>	13		1
<i>Megakaryocyte Nucleaus</i>	7	4	1	<i>Sickle Cells</i>			
<i>Granulation</i>	10	2	1	<i>Fragmentocytes</i>	9		
<i>Others</i>				<i>Spherocytes</i>	6	1	
				<i>Stomatocytes</i>	4	1	
				<i>Basophilic Stripling</i>	5		
				<i>Howell-Jolly Bodies</i>			
				<i>Pappenheim Bodies</i>		1	
				<i>Others</i>	6	1	

1.8 Qualab Codes

Summary of the participant codes
(Bold printed: expected codes)

Code	Text	Number
5	Atypical lymphocytes, probably reactive	254
30	Pathologic findings, refer to expert	254
4	Neutrophils, Toxic Changes	32
12	Microcytes	30
15	Polychromatophilic Red Cells	28
9	Macrothrombocytes	27
16	Poikilocytosis	23
6	Atypical Lymphocytes, probably neoplastic	22
29	Normal Blood Smear	22
2	Neutrophils, left shift	16
8	Leukocytes, other:	16
13	Makrocytes	15
17	Elliptocytes/Ovalocytes	14
22	Rouleaux	14
14	Hypochromic Erythrocytes	13
27	Erythrocytes, other:	13
26	Tear Drops	10
11	Thrombocytes, Giant	9
1	Neutrophils, hypersegmentation of nucleus	5
10	Thrombocyte aggregates	5
19	Targetcells	4
18	Stomatocytes	3
20	Fragmentocytes	3
21	Spherocytes	3
3	Pelger Hüet Anomaly	2
23	Erythrocytes agglutination	2
25	Basophilic strippling	2
24	Howell-Jolly bodies	1
	Total	358

2 Sample B

2.1 ABX Micros



Findings MQ 2015-1 H3B

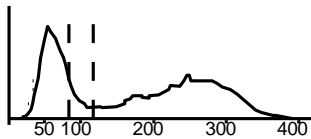
59 year old man

WBC :	6.7	$10^9/L$	MCV :	112.6	H	fL
RBC :	3.6	L $10^{12}/L$	MCH :	37.8	H	pg
HGB :	136	g/L	MCHC:	336		g/L
HCT :	405	L/L	RDW :	14.8		%
PLT :	111	L $10^9/L$	MPV :	7.3		fL
PCT :	.081	L $10^{-2}L/L$	PDW :	12.7		%

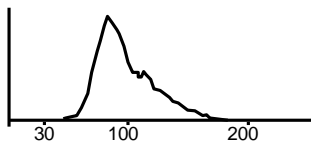
WBC Fl ags : M2

DIFF:					
%LYM:	29.0	%	#LYM:	1.9	$10^9/L$
%MON:	7.0	%	#MON:	0.4	$10^9/L$
%GRA:	64.0	%	#GRA:	4.4	$10^9/L$

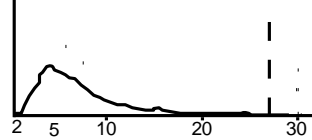
WBC



RBC



PLT



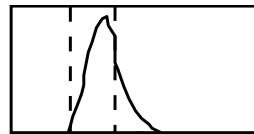
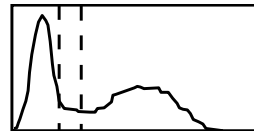
2.2 Mythic



Findings MQ 2015-1 H3B

59 year old man

WBC	6.9		10 ⁹ /l	3.5 / 10.0
LYM	2.4		10 ⁹ /l	1.2 / 3.2
MON	0.6		10 ⁹ /l	0.1 / 1.0
GRA	3.9		10 ⁹ /l	1.2 / 6.8
LYM%	35.0		%	17.0 / 48.0
MON%	8.0		%	2.0 / 10.0
GRA%	57.0		%	43.0 / 76.0
RBC	3.67	I	10 ¹² /l	4.00 / 5.70
HGB	133		g/l	140 / 180
HCT	0.401		l/l	0.420 / 0.540
MCV	109.3	h	fl	80.0 / 100.0
MCH	36.2	H	pg	26.0 / 34.0
MCHC	332		g/l	310 / 365
RDW	13.2		%	10.0 / 16.0
PLT	136	I	10 ⁹ /l	150 / 400
MPV	7.6		fl	7.0 / 11.0
PCT	0.103		cl/l	0.100 / 0.500
PDW	11.8		%	10.0 / 18.0

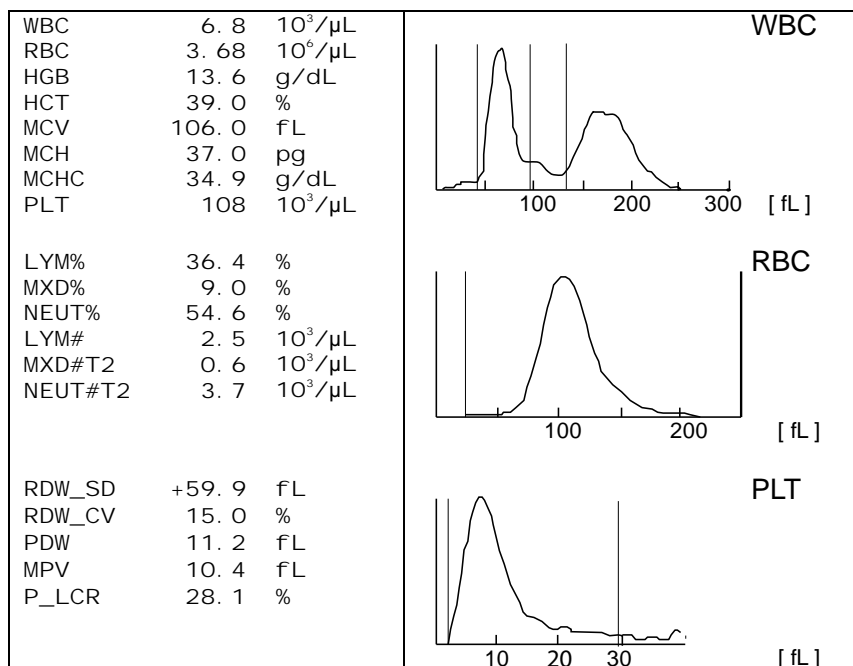


2.3 Sysmex KX21



Findings MQ 2015-1 H3B
59 year old man

Analysis	Result	Unit	Reference Value
Blood count			
Hemoglobin	136	g/l	134-170
Hematocrit	0.390	l/l	0.400-0.500
Erythrocytes	3.68	T/l	4.2-5.7
MCV	106.0	fl	80-100
MCH	37.0	pg	26-34
MCHC	* 349	g/l	310-360
<u>Thrombocytes</u>	* 108	G/l	143-400
MXD	0.60	(Mono/Eos/Baso)	
<u>Leukocytes</u>	6.80	G/l	3.0-9.6
Leucocyte Differentiation			
Neutrophiles	3.70		1.40-8.00
Lymphocytes	2.50		1.50-4.00



2.4 Sysmex XE-5000

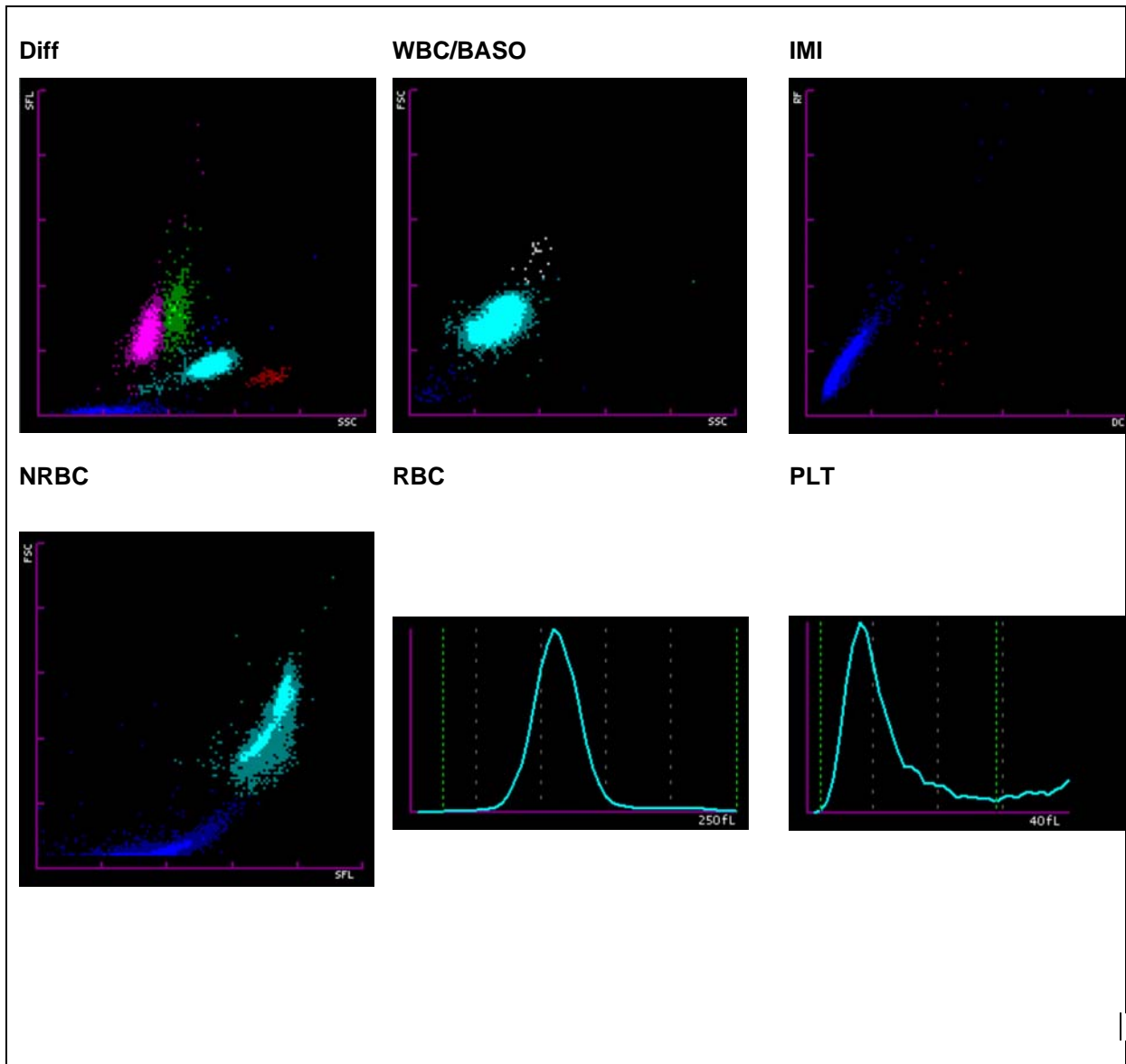


Findings MQ 2015-1 H3B

59 year old man

Analysis	Result	Unit	Reference value
Blood Count			
Hemoglobin	138	g/l	134-170
Hematocrit	0.408	l/l	0.400-0.500
Erythrocytes	* 3.7	T/l	4.2-5.7
MCV	* 110.3	fl	80-100
MCH	* 37.3	pg	26-34
MCHC	338	g/l	310-360
Mikrocytes	* 15.1	%	11.0-14.8
Thrombocytes	* 118	G/l	143-400
Leucocytes	7.12	G/l	3.0-9.6
Leucocyte Differentiation			
Neutrophils	3.75	G/l	1.40-8.00
Monocytes	0.67	G/l	0.16-0.95
Eosinophils	0.13	G/l	0.00-0.70
Basophils	0.02	G/l	0.00-0.15
Lymphocytes	2.55	G/l	1.50-4.00
IG abs.	0.02	G/l	0.00-0.03
IG %	0.3	%	0.0-0.5
NRBC abs.	0.00	G/l	
NRBC		/100 Lc	

Findings HAD MQ 2015-1 H3B



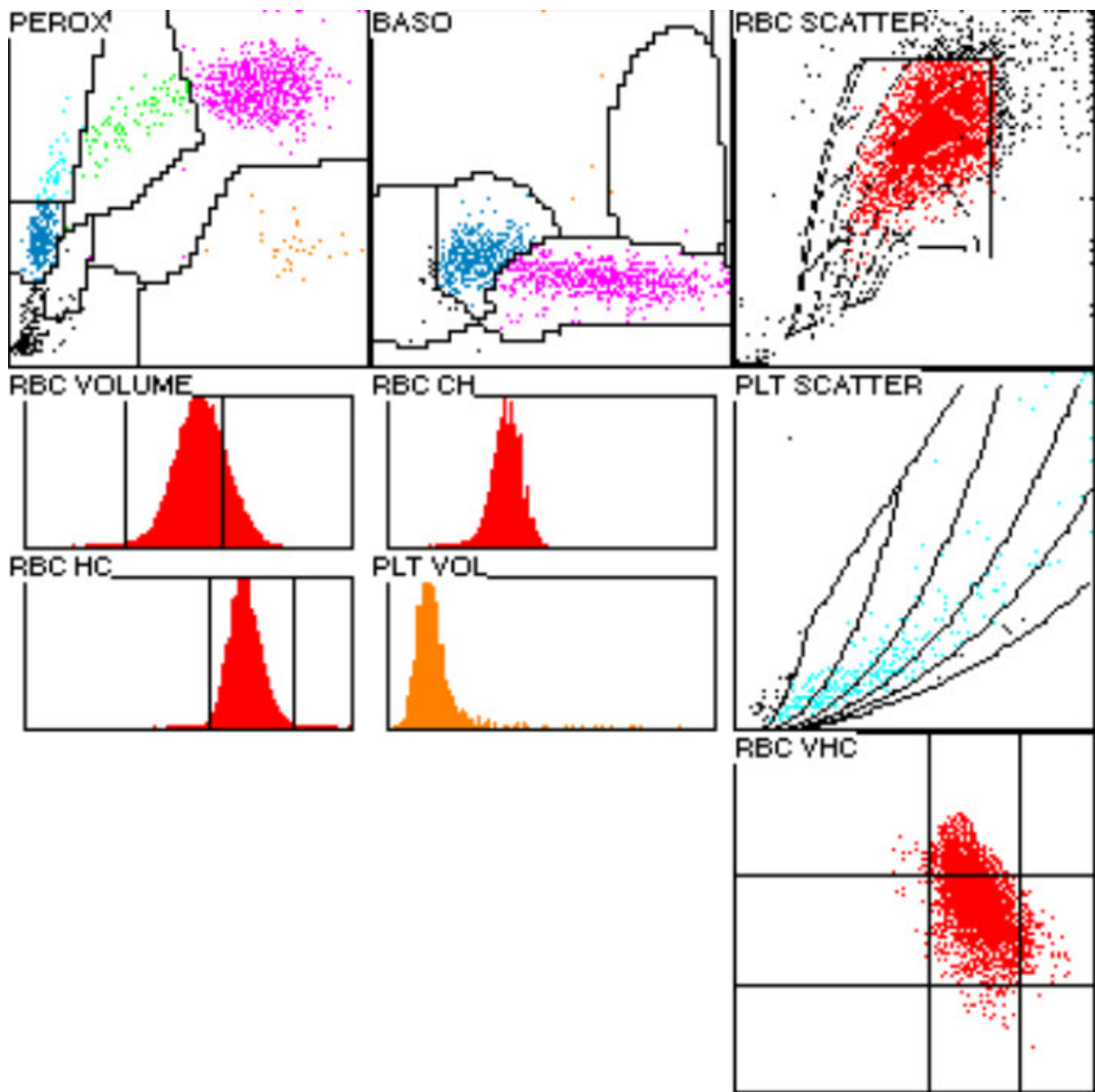
2.5 ADVIA 120



Findings MQ 2015-1 H3B

59 year old man

Analysis	Result	Unit	Reference value
Blood Count			
Hemoglobin	140	g/l	134-170
Hematocrit	0.407	l/l	0.400-0.500
Erythrocytes	* 3.78	T/l	4.2-5.7
MCV	* 107.7	fl	80-100
MCH	* 37.1	pg	26-34
MCHC	344	g/l	310-360
Mikrocytes	0.3	%	0-2.0
Makrocytes	* 18.3	%	0-2.0
Hypochromic Ec	0.8	%	0-2.0
Hyerchromic Ec	0.5	%	0-2.0
RDW	14.6	%	11.0-0-14.8
Thrombocytes	* 109	G/l	143-400
Vd. L-SHIFT	0	+	Keine (0)
Leukocytes	6.86	G/l	3.0-9.6
Leucocytes Differentiation			
Neutrophils	3.87	G/l	1.40-8.00
Monocytes	0.34	G/l	0.16-0.95
Eosinophils	0.13	G/l	0.00-0.70
Basophils	0.02	G/l	0.00-0.15
Lymphocytes	2.31	G/l	1.50-4.00
LUC	2.7	%	0.0-4.0



2.6 Differential Blood Smear

Findings MQ 2015-1 H3B

59 year old man

Analysis	Result	Unit	Reference value
Neutrophils total	3.64	G/l	1.40-8.00
Monocytes	0.48	G/l	0.16-0.95
Eosinophils	0.07	G/l	0.00-0.70
Basophils	0.03	G/l	0.00-0.15
Lymphocytes	2.64	G/l	1.50-4.00
Neutrophils total	53.0	%	40.0-74.0
Neutrophils Band	5.0	%	0.0-20.0
Neutrophils Segmented	48.0	%	30.0-50.0
Monocytes	7.0	%	3.4-9.0
Eosinophils	1.0	%	0.0-7.0
Basophils	0.5	%	0.0-1.5
Lymphocytes	38.5	%	19.0-48.0
Plasmacells	0.0	%	0-0.5
Blasts	0.0	%	0
Promyelocytes	0.0	%	0
Myelocytes	0.0	%	0
Metamyelocytes	0.0	%	0
Nucleated Red Cells	0.0	/100 Lc	

Comment

The red blood count is normochromic, clearly anisocytic with a large number of macrocytes up to a few megalocytes upon microscopic review, discrete polychromasia, slight poikilocytosis with few ovalocytes. The neutrophils exhibit fine to occasionally slightly coarse cytoplasmic granulation, rarely highly segmented nuclei forms. The lymphocytes are polymorphic in terms of size and nuclei, few (<10%) with azurophilic granules (LGL). Mild thrombocytopenia, clear platelet anisocytosis, giant forms are rare in microscopic review. Dr. med. J. Goede / K. Schreiber

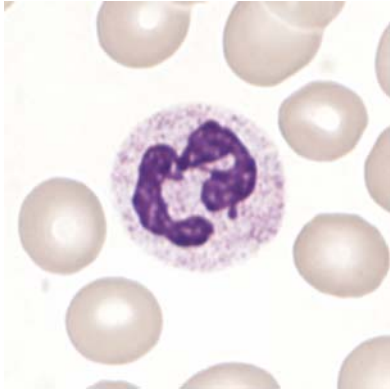


Abb 1. Neutrophil (Seg)

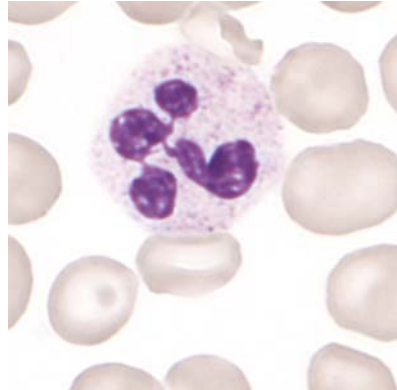


Abb 2. Neutrophil (Seg)

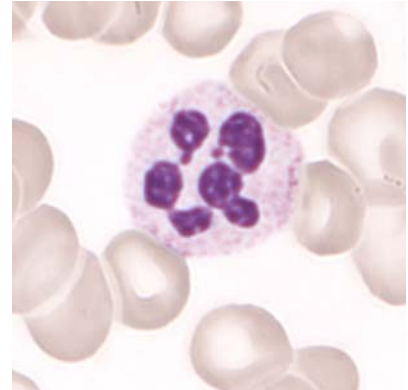


Abb 3. Neutrophil, hypersegmentation

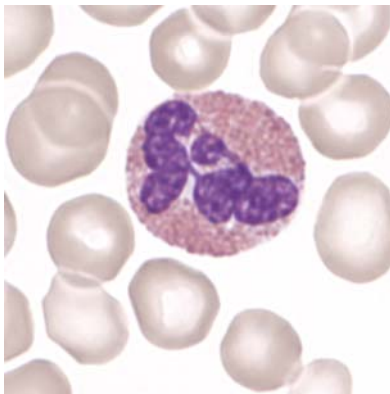


Abb 4. Eosinophil

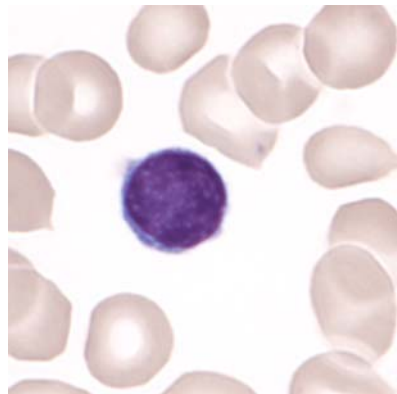


Abb 5. Lymphocyte

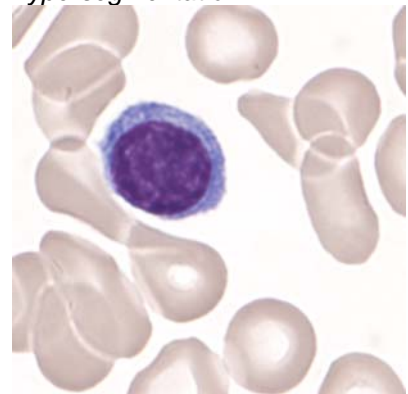


Abb 6. Lymphocyte

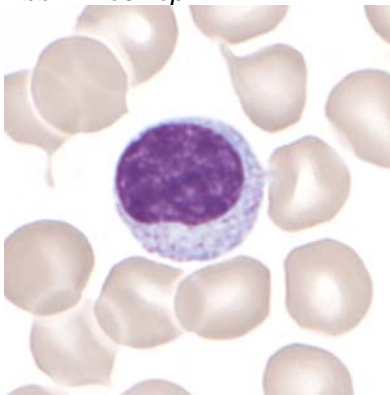


Abb 7. Lymphocyte (LGL)

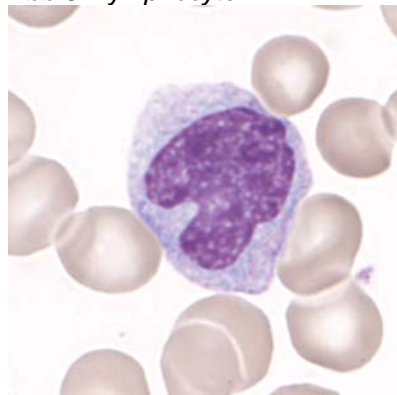


Abb 8. Monocyte

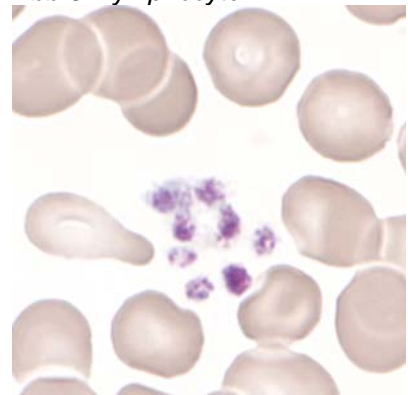


Abb 9. Thrombocytes

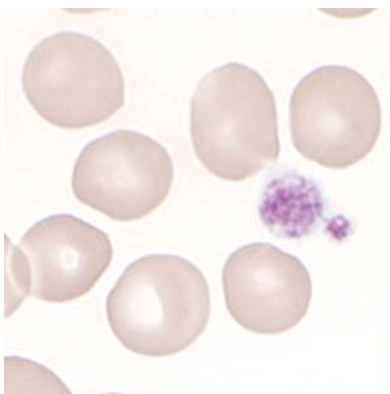


Abb 10. Macrothrombocyte

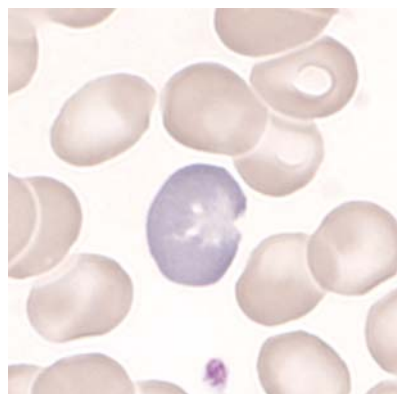


Abb 11. Polychromasia

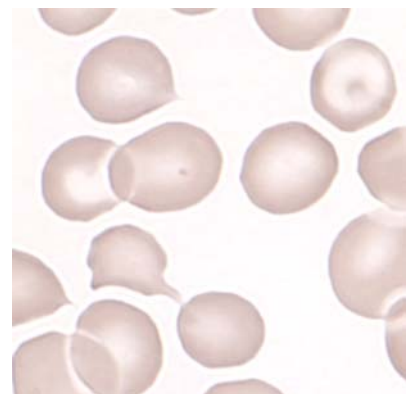


Abb 12. Poykilocytosis

2.7 Summary of participant results

Leukozyte Differential H3-B

	<1	1-4	5-9	10-19	20-29	30-39	40-49	50-59	60-69	70-79	>79
<i>Neutrophils Band</i>	21	136	132*	59	9	3	1	2			
<i>Neutrophils Segmented.</i>	1	2	1	4	3	41	163*	143	5		
<i>Eosinophils</i>	60	291*	12								
<i>Basophile</i>	271*	92									
<i>Monocytes</i>	22	120	194*	27							
<i>Lymphocytes</i>	1		2	5	18	194*	132	8	1	1	1
<i>Plasmacells</i>	351*	9	1	1	1						
<i>Blasts</i>	352*	5	1	1	2	2					
<i>Promyelocytes</i>	361*	1		1							
<i>Myelocytes</i>	351*	9	1	2							
<i>Metamyelozyten</i>	354*	8	1								
<i>Erythrocytes Nucleated</i>	359*	4									
<i>Unknown</i>	351*	9	3								
<i>Smudge cells</i>	334*	25	4								

Beurteilung H3-B

	<i>light</i>	<i>medium</i>	<i>strong</i>		<i>light</i>	<i>medium</i>	<i>strong</i>
<i>Hypersegmentation</i>	54	13	3	<i>Hypochromic Ec</i>	47	17	1
<i>Pelger-Hüet Anomaly</i>	3	1		<i>Polychromatic Ec</i>	129*	41	5
<i>Coarse Granulation</i>	77	15	2	<i>Anisocytes</i>	133	90*	14
<i>Basophilic Stripping</i>	9	1		<i>Mikrocytes</i>	82	15	
<i>Vacuoles</i>	29	5	1	<i>Makrocytes</i>	107	69*	3
<i>Atypical Lymph, reactive</i>	77	17	5	<i>Megalocytes</i>	28*	9	1
<i>Atypical Lymph, neoplastic</i>	6	1	1	<i>Poikilocytosis</i>	138*	40	5
<i>Others</i>	5	7	1	<i>Ovalocytes</i>	63*	14	
				<i>Target Cells</i>	80	9	
				<i>Akanthocytes</i>	12	2	
<i>Anisocytosis</i>	90	38*	2	<i>Echinocytes</i>	9		
<i>Megakaryocyte Nucleaus</i>	10	7		<i>Sickle Cells</i>	4		
<i>Granulation</i>	10	3		<i>Fragmentocytes</i>	15	1	
<i>Others</i>				<i>Spherocytes</i>	13	1	
				<i>Stomatocytes</i>	30	7	
				<i>Basophilic Stripping</i>	12		
				<i>Howell-Jolly Bodies</i>	7		
				<i>Pappenheim Bodies</i>	3		
				<i>Others</i>	11	3	1

2.8 Qualab Codes

Summary of the participant codes
(Bold printed: expected codes)

Code	Text	Number
29	Normal Blood smear	150
30	Pathologic findings, refer to expert	134
13	Makrocytes	101
15	Polychromatophilic Red Cells	87
16	Poikilocytosis	74
1	Neutrophils, hypersegmentation of nucleus	41
5	Atypical Lymphocytes, probably reactive	39
19	Target cells	33
12	Mikrocytes	29
14	Hypochromic Erythrocytes	26
26	Tear Drops	24
9	Macrothrombocytes	23
11	Thrombocytes other	23
22	Rouleau	22
4	Neutrophils, Toxic Changes	19
18	Stomatocytes	15
17	Elliptocytes/Ovalocytes	14
27	Erythrocytes, other:	12
6	Atypical Lymphocytes, probably neoplastic	10
8	Leukocytes, other:	7
21	Spherocytes	6
2	Neutrophils, left shift	5
20	Fragmentocytes	5
3	Pelger-Hüet	3
28	Parasites	3
10	Plättchenaggregate	2
24	Howell-Jolly bodies	2
25	Basophilic strippling	2
7	Auer rods	1
	Total	