

Verein für  
Association pour le  
Associazione per il



medizinische Qualitätskontrolle  
contrôle de qualité médical  
controllo di qualità medico

Report

# Differential Blood Smear H3

MQ 2018-3

## Acknowledgements

The Mythic 18 analyzer was provided by the company Polymed, the ABX Microsemi CRP analyzer by the company Axonlab and the XP-300 analyzer by the Firma Sysmex. MQ employees conducted the measurements.

The findings of the XE-5000 and ADVA 2120 devices and of the microscopic blood counts were generated by the Central Laboratory of Medical Diagnostic HAD of the University Hospital Zurich Hematology Clinic. The lab is ISO/IEC 17025 certified (STS 445). Dr. J-D. Studt is the responsible manager; Prof. MG Manz, M.D., the clinic director.

[www.haematologie.usz.ch](http://www.haematologie.usz.ch)

For information regarding all analyses offered by the University Hospital of Zurich, see:

[www.uzl.usz.ch](http://www.uzl.usz.ch)

(c) 2017 Verein für medizinische Qualitätskontrolle

# Index

<b>1</b>	<b>SAMPLE A</b>	<b>4</b>
1.1	ABX Microsemi CRP	4
1.2	Mythic	5
1.3	Sysmex XP300	6
1.4	Sysmex XE-5000	7
1.5	ADVIA 2120	9
1.6	Differential Blood Smear	11
1.7	Summary of participant results	13
1.8	Qualab Codes	14
<b>2</b>	<b>SAMPLE B</b>	<b>15</b>
2.1	ABX Microsemi CRP	15
2.2	Mythic	16
2.3	Sysmex XP300	17
2.4	Sysmex XE-5000	18
2.5	ADVIA 2120	20
2.6	Differential Blood Smear	22
2.7	Summary of participant results	24
2.8	Qualab Codes	25

# 1 Sample A

## 1.1 ABX Microsemi CRP



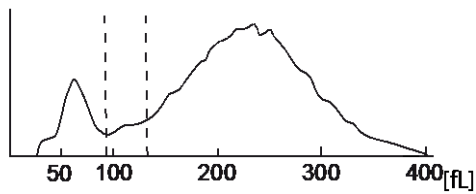
### Findings MQ 2018-3 H3A

16 year old woman

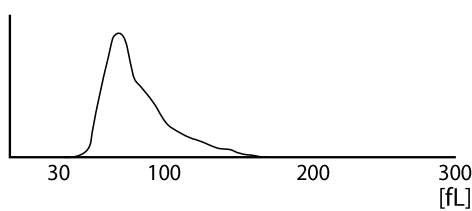
WBC :	13.6	H	10 <sup>9</sup> /L	MCV :	89.6	fL
RBC :	4.51		10 <sup>12</sup> /L	MCH :	30.4	pg
HGB :	13.7		g/L	MCHC:	34.0	g/L
HCT :	40.4		L/L	RDW :	12.3	%
PLT :	409	H	10 <sup>9</sup> /L	MPV :	7.4	fL
PCT :	0.304		10 <sup>-2</sup> L/L	PDW :	14.8	%

DIFF:				#LYM:	1.7	10 <sup>9</sup> /L
%LYM:	12.3	L	%	#MON:	0.7	10 <sup>9</sup> /L
%MON:	5.3		%	#GRA:	11.2	H 10 <sup>9</sup> /L
%GRA:	82.4	H	%			

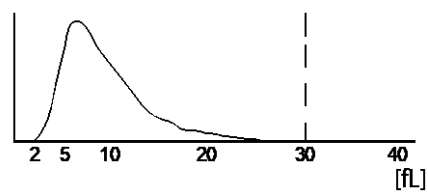
### WBC



### RBC



### PLT



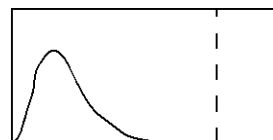
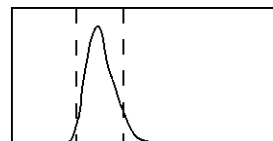
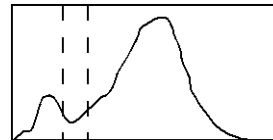
## 1.2 Mythic



### Findings MQ 2018-3 H3A

16 year old woman

WBC	13.6	H	10 <sup>9</sup> /l	3.5 / 10.0
LYM	1.3		10 <sup>9</sup> /l	1.2 / 3.2
MON	0.7		10 <sup>9</sup> /l	0.1 / 1.0
GRA	11.6	H	10 <sup>9</sup> /l	1.2 / 6.8
LYM%	9.4	L	%	17.0 / 48.0
MON%	5.0		%	2.0 / 10.0
GRA%	85.6	H	%	43.0 / 76.0
RBC	4.38		10 <sup>12</sup> /l	4.00 / 5.70
HGB	139		g/l	140 / 180
HCT	0.392		l/l	0.420 / 0.540
MCV	89.5		fl	80.0 / 100.0
MCH	31.7		pg	26.0 / 34.0
MCHC	355		g/l	310 / 365
RDW	12.8		%	10.0 / 16.0
PLT	349		10 <sup>9</sup> /l	150 / 400
MPV	7.9		fl	7.0 / 11.0
PCT	0.276		cl/l	0.100 / 0.500
PDW	15.5		%	10.0 / 18.0



FLAGS : FL3 LEUCOCYTOSIS LYMPHOPENIA GRANULOCYTOSIS

### 1.3 Sysmex XP300



**Findings MQ 2018-3 H3A**  
16 year old woman

WBC	+ 13.8	$10^3/\mu\text{L}$	<p>WBC [fL]</p>	
RBC	4.64	$10^6/\mu\text{L}$		
HGB	14.3	g/L		
HCT	39.7	%		
MCV	85.6	fL		
MCH	30.8	pg		
MCHC	36.0	g/L		
PLT	+ 407	$10^3/\mu\text{L}$		
LYM%	- 10.8	%		<p>RBC [fL]</p>
MXD%	11.1	%		
NEUT%	+ 78.1	%		
LYM#	1.5	$10^3/\mu\text{L}$		
MXD#	+ 1.5	$10^3/\mu\text{L}$	<p>PLT [fL]</p>	
NEUT#	+ 10.8	$10^3/\mu\text{L}$		
RDW_SD	38.8	fL		
RDW_CV	12.1	%		
PDW	11.2	fL		
MPV	9.0	fL		
P_LCR	18.1	%		
PCT	+ 0.37	%		

## 1.4 Sysmex XE-5000

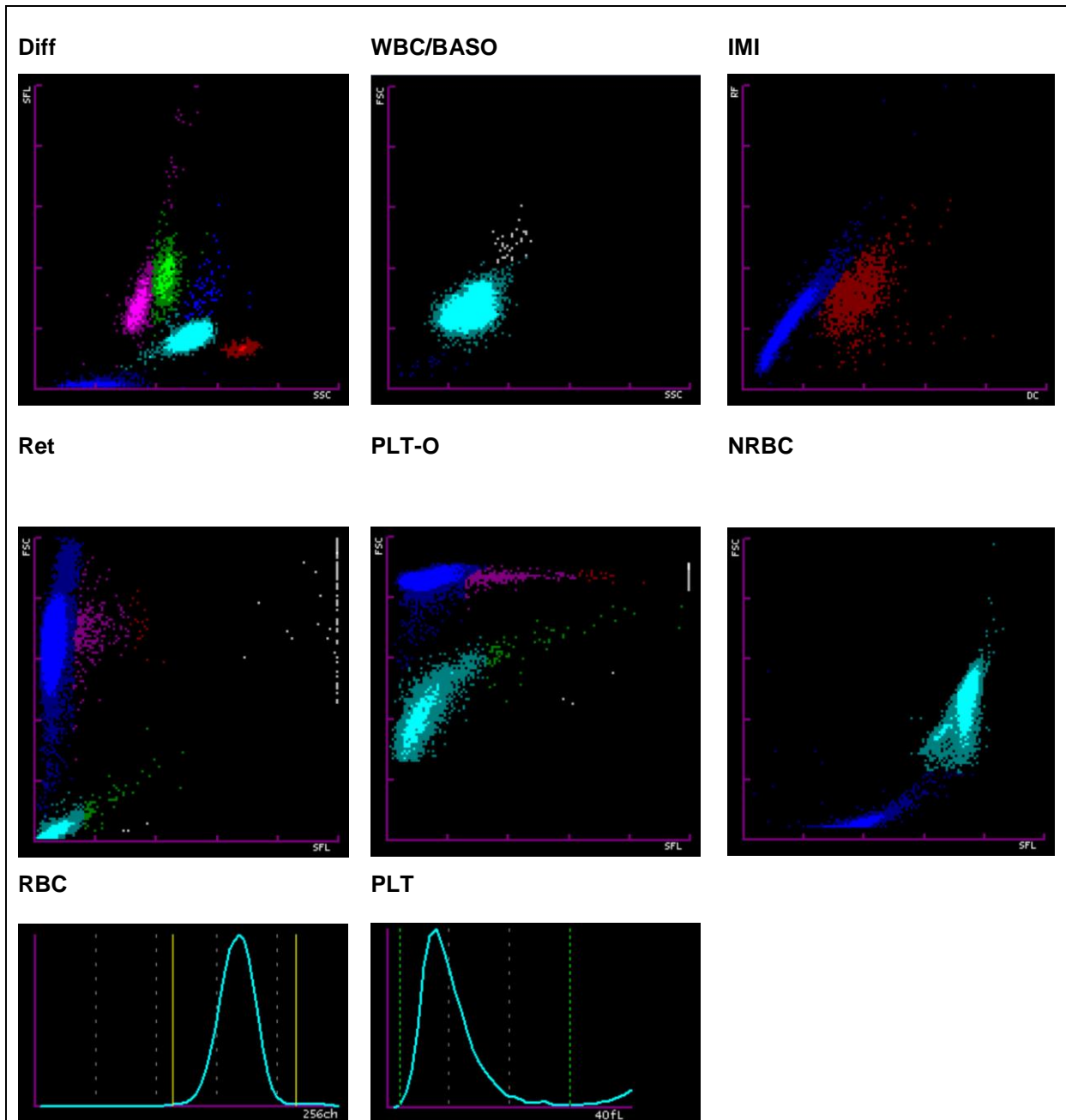


### Findings MQ 2018-3 H3A

16 year old woman

Analysis	Result	Unit	Reference value
<b>Blood Count</b>			
<u>Hemoglobin</u>	142	g/l	
<u>Hematocrit</u>	0.419	l/l	
Erythrocytes	4.70	T/l	
MCV	89.1	fl	80-100
MCH	30.2	pg	26-34
MCHC	339	g/l	310-360
Mikrocytes	12.6	%	11.0-14.8
<u>Thrombocytes</u>	399	G/l	143-400
<u>Leucocytes</u>	* 13.83	G/l	3.0-9.6
<b>Leucocyte Differentiation</b>			
Neutrophils	* 10.65	G/l	1.40 – 8.00
Monocytes	* 1.43	G/l	0.16 – 0.95
Eosinophils	0.23	G/l	0.00 – 0.70
Basophils	0.03	G/l	0.00-0.15
Lymphocytes	* 1.49	G/l	1.50 - 4.00
IG abs.	* 0.10	G/l	0.00 – 0.03
IG %	* 0.7	%	0.0 – 0.05
NRBC abs.	0.00	G/l	
NRBC	0.0	/100 Lc	

Findings HAD MQ 2018-3 H3A



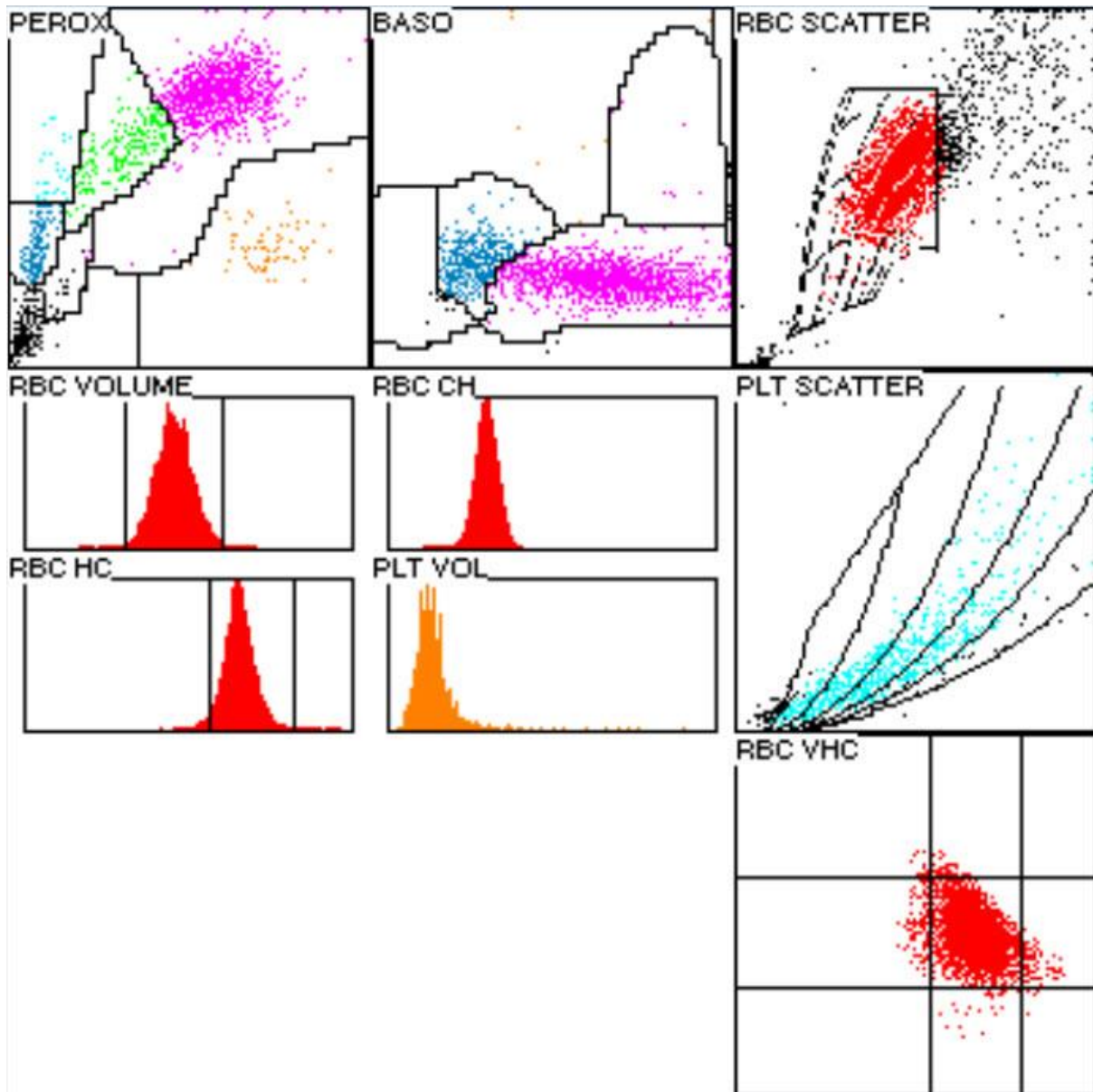


## 1.5 ADVIA 2120



### Findings HAD MQ 2018-3 H3A 16 year old woman

Analysis	Result	Unit	Reference value
<b>Blood Count</b>			
<u>Hemoglobin</u>	144	g/l	
<u>Hematocrit</u>	0.430	l/l	
Erythrocytes	4.72	T/l	
MCV	91.1	fl	80-100
MCH	30.5	pg	26-34
MCHC	335	g/l	310-360
Mikrocytes	0.2	%	0-2.0
Macrocytes	0.4	%	0-2.0
Hypochromic Ec	* 2.5	%	0-2.0
Hyperchromic Ec	0.3	%	0-2.0
RDW	12.4	%	11.0-14.8
<u>Thrombocytes</u>	* 417	G/l	143-400
Vd. L-SHIFT	0	+	Keine (0)
<u>Leucocytes</u>	* 14.24	G/l	3.0-9.6
<b>Leucocyte Differentiation</b>			
Neutrophils	* 11.34	G/l	1.40-8.00
Monocytes	0.95	G/l	0.16-0.95
Eosinophils	0.23	G/l	0.00-0.70
Basophile	0.05	G/l	0.00-0.15
Lymphocytes	* 1.49	G/l	1.50-4.00
LUC	0.16	%	0.0-4.0



## 1.6 Differential Blood Smear

### Findings HAD MQ 2018-3 H3A

16 year old woman

Analysis		Result	Unit	Reference value
Neutrophils total	*	10.96	G/l	1.40-8.00
Monocytes	*	1.14	G/l	0.16-0.95
Eosinophils		0.28	G/l	0.00-0.70
Basophils		0.07	G/l	0.00-0.15
Lymphocytes		1.71	G/l	1.50-4.00
Neutrophils total	*	77.0	%	40.0-74.0
Neutrophils Band		11.0	%	0.0-20.0
Neutrophils Segmented	*	66.0	%	30.0-50.0
Monocytes		8.0	%	3.4-9.0
Eosinophils		2.0	%	0.0-7.0
Basophils		0.5	%	0.0-1.5
Lymphocytes	*	12.0	%	19.0-48.0
Plasmacells		0.0	%	0-0.5
Blasts		0.0	%	0
Promyelocytes		0.0	%	0
Myelocytes		0.0	%	0
Metamyelocytes	*	0.5	%	0
Nucleated Red Cells		0.0	%	

### Commentary

Escape of 0.5% myeloid precursors. Neutrophil granulocytes with fine to coarse cytoplasmic granulation, a few with hyper-segmented nuclei. Lymphocytes, some atypical, likely reactive, little size or nuclear pleomorphism. Anisocytic thrombocytes. K. Schreiber

K. Schreiber / PD. Dr. St. Balabanov

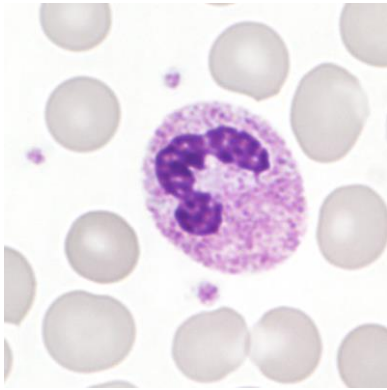


Abb 1. Neutrophiles (Seg)

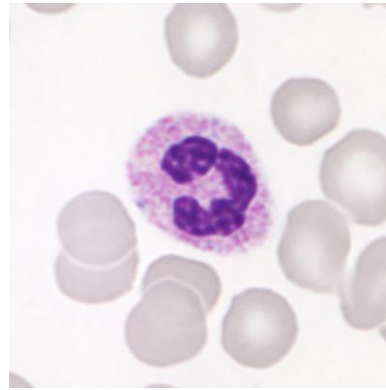


Abb 2. Neutrophiles (band)

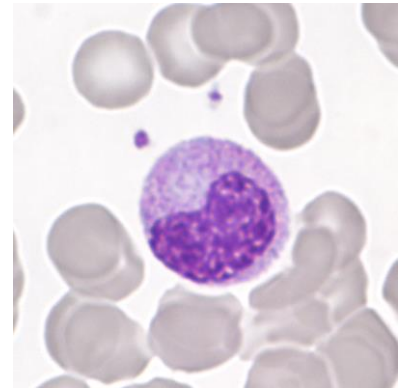


Abb 3. Metamyelocyte

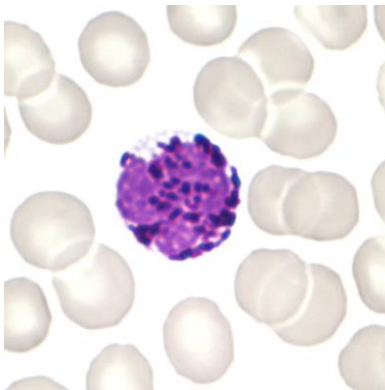


Abb 4. Basophile

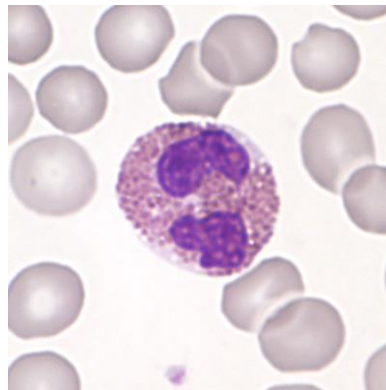


Abb 5. Eosinophile

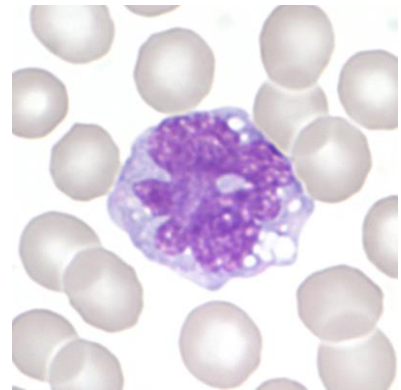


Abb 6. Monocyte

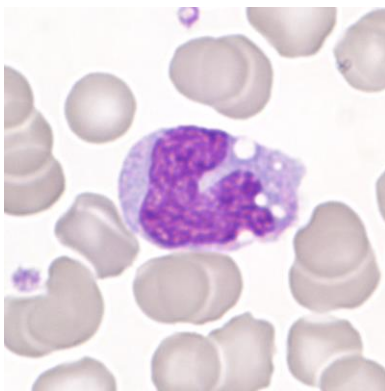


Abb 7. Monocyte

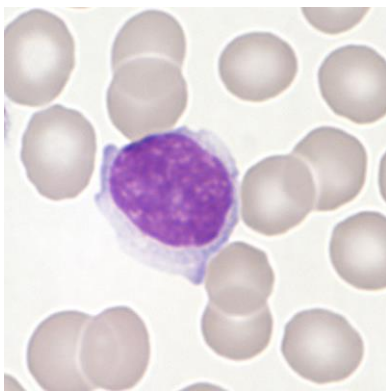


Abb 8. Lymphocyte

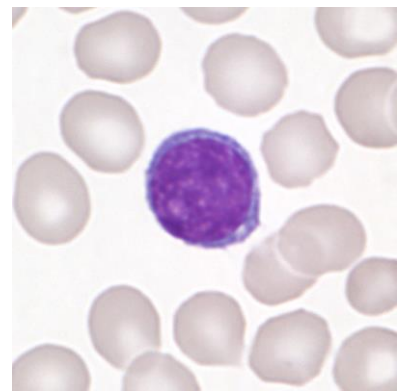


Abb 9. Lymphocyte

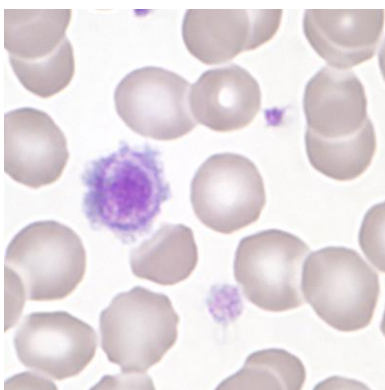


Abb 10. Giant platelet

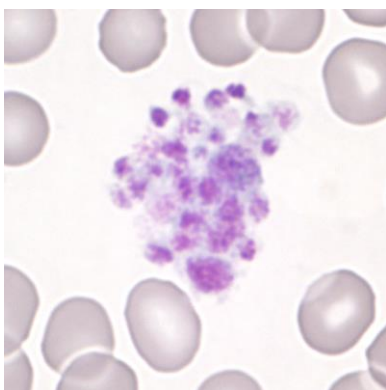


Abb 11. Platelet aggregate

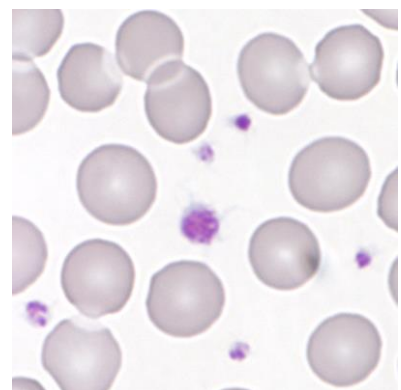


Abb 12. Platelets

## 1.7 Summary of participant results

### Leukocyte Differenzial H3-A

	0	1-4	5-9	10-19	20-29	30-39	40-49	50-59	60-69	70-79	>79
<i>Neutrophils Band</i>	2	54	79	117	23	7	5			3	
<i>Neutrophils Segmented.</i>	2		2	2		5	9	43	114	99	14
<i>Eosinophils</i>	36	244	8		1			1			
<i>Basophile</i>	230	58	2								
<i>Monocytes</i>	10	69	183	28							
<i>Lymphocytes</i>	2	1	49	216	19	2			1		
<i>Plasmacells</i>	278	9	1	2							
<i>Blasts</i>	285	3	2								
<i>Promyelocytes</i>	288	2									
<i>Myelocytes</i>	283	7									
<i>Metamyelocyten</i>	285	4	1								
<i>Erythrocytes Nucleated</i>	290										
<i>Unknown</i>	278	12									
<i>Smudge cells</i>	275	14	1								

### Evaluation H3-A

	light	medium	strong		light	medium	strong
<i>Hypersegmentation</i>	90	23	5	<i>Hypochromic Ec</i>	20	4	
<i>Pelger-Hüet Anomaly</i>	2		1	<i>Polychromatic Ec</i>	30	4	
<i>Coarse Granulation</i>	98	37	3	<i>Anisocytes</i>	107	12	
<i>Basophilic Stripling</i>	25	2		<i>Mikrocytes</i>	33	2	
<i>Vacuoles</i>	39	10	1	<i>Makrocytes</i>	20	2	
<i>Reaktive Lymphocytes</i>	80	19	1	<i>Megalocytes</i>	4		
<i>Atypical Lymphocytes</i>	1			<i>Poikilocytosis</i>	24	5	
<i>Others</i>	4			<i>Ovalocytes</i>	23	4	
				<i>Target Cells</i>	6		
				<i>Akanthocytes</i>	9	2	
<i>Anisocytosis</i>	114	23	5	<i>Echinocytes</i>	23	3	1
<i>Megakaryocyte Nucleaus</i>	9	2	2	<i>Sickle Cells</i>	1		
<i>Granulation</i>	16	4	1	<i>Fragmentocytes</i>	4		1
<i>Others</i>	1			<i>Spherocytes</i>	2	1	2
				<i>Stomatocytes</i>	11		
				<i>Basophilic Stripling</i>	3		
				<i>Howell-Jolly Bodies</i>		1	
				<i>Pappenheim Bodies</i>			
				<i>Others</i>	2	2	

### Commentary

The smear is from a patient with influenza.

## 1.8 Qualab Codes

Summary of the participant codes  
(Bold printed: expected codes)

Code	Text	Number
29	Normal findings	121
<b>31</b>	<b>Pathologic findings</b>	<b>78</b>
<b>1</b>	<b>Neutrophils, hypersegmentation of nucleus</b>	<b>76</b>
<b>5</b>	<b>Atypical lymphocytes, probably reactive</b>	<b>59</b>
<b>30</b>	<b>Pathologic findings, refer to expert</b>	<b>58</b>
<b>4</b>	<b>Neutrophils, Toxic Changes</b>	<b>54</b>
<b>2</b>	<b>Neutrophils, left shift</b>	<b>42</b>
9	Macrothrombocytes	23
16	Poikilocytosis	15
13	Macrocytes	13
8	Leucocytes other:	12
12	Microcytes	12
11	Thrombocytes, others	10
15	Polychromatophilic Red Cells	10
27	Erythrocytes, other	10
10	Thrombocyte aggregates	9
22	Rouleaux	9
14	Hypochromic Erythrocytes	7
17	Elliptocytes/Ovalocytes	5
18	Stomatocytes	4
25	Basophilic strippling	3
20	Fragmentocytes	2
26	Teardrops	2
3	Pelger Hüet Anomaly	1
6	Atypical lymphocytes, probably neoplastic	1
21	Spherocytes	1
24	Howell-Jolly bodies	1
99	Total	269

## 2 Sample B

### 2.1 ABX Microsemi CRP



#### Findings MQ 2018-3 H3B

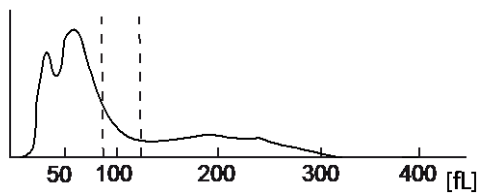
22 year old man

WBC :	10.8	H	10 <sup>9</sup> /L	MCV :	83.7	fL
RBC :	4.83		10 <sup>12</sup> /L	MCH :	27.6	pg
HGB :	13.4		g/L	MCHC:	33.0	g/L
HCT :	40.4		L/L	RDW :	12.3	%
PLT :	108	L	10 <sup>9</sup> /L	MPV :	7.1	fL
PCT :	0.077	L	10 <sup>-2</sup> L/L	PDW :	11.4	%

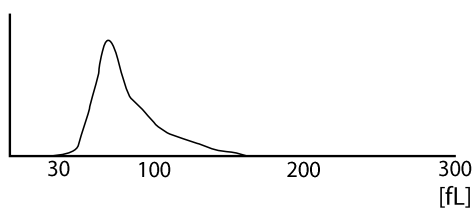
#### WBC FLAGS: L1 M2 G1

%LYM:	58.4	H	%	#LYM:	6.3	H	10 <sup>9</sup> /L
%MON:	10.9	H	%	#MON:	1.2	H	10 <sup>9</sup> /L
%GRA:	30.7	L	%	#GRA:	3.3		10 <sup>9</sup> /L

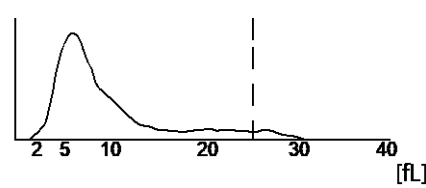
#### WBC



#### RBC



#### PLT



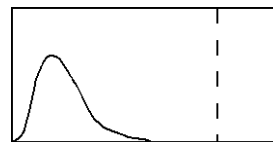
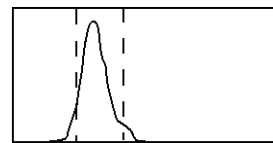
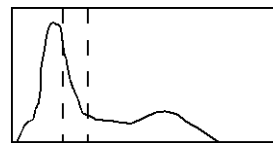
## 2.2 Mythic



### Findings MQ 2018-3 H3B

22 year old man

WBC	8.0	$10^9/l$	3.5 /	10.0
LYM	8.0	$10^9/l$	1.2 /	3.2
MON	1.5	H $10^9/l$	0.1 /	1.0
GRA	3.5	$10^9/l$	1.2 /	6.8
LYM%	37.1	%	17.0 /	48.0
MON%	19.2	H %	2.0 /	10.0
GRA%	43.7	%	43.0 /	76.0
RBC	4.83	$10^{12}/l$	4.00 /	5.70
HGB	126	g/l	120 /	180
HCT	0.400	l/l	0.360 /	0.540
MCV	82.8	fl	80.0 /	100.0
MCH	26.1	pg	26.0 /	34.0
MCHC	315	g/l	310 /	365
RDW	13.7	%	10.0 /	16.0
PLT	261	$10^9/l$	150 /	400
MPV	7.7	fl	7.0 /	11.0
PCT	0.201	cl/l	0.100 /	0.500
PDW	13.9	%	10.0 /	18.0



FLAGS: FL2 FR1  
MONOCYTOSIS

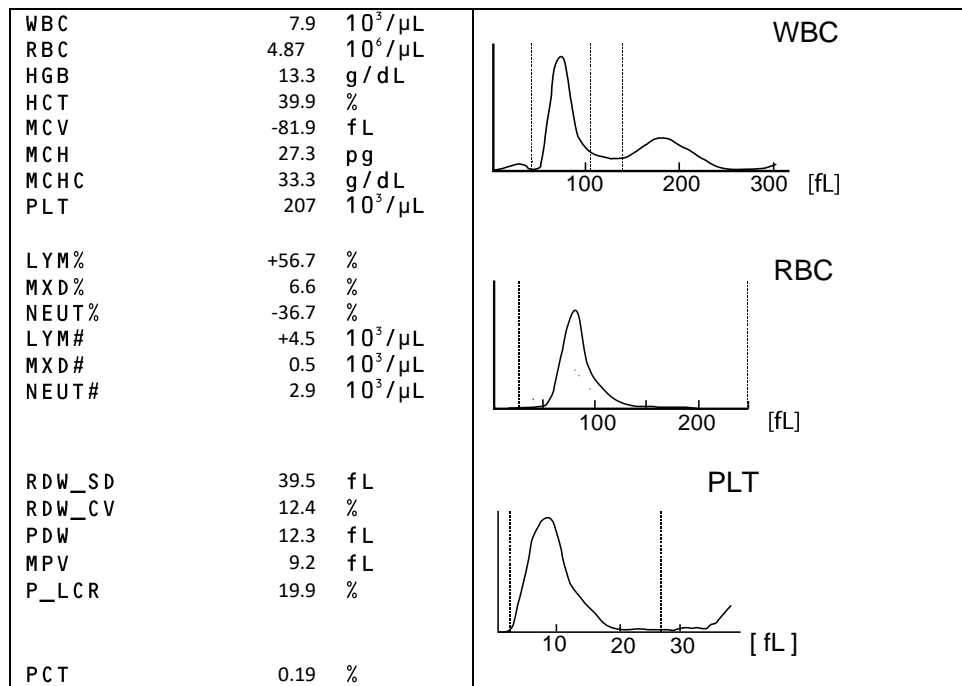


### 2.3 Sysmex XP300



#### Findings MQ 2018-3 H3B

22 year old man



## 2.4 Sysmex XE-5000

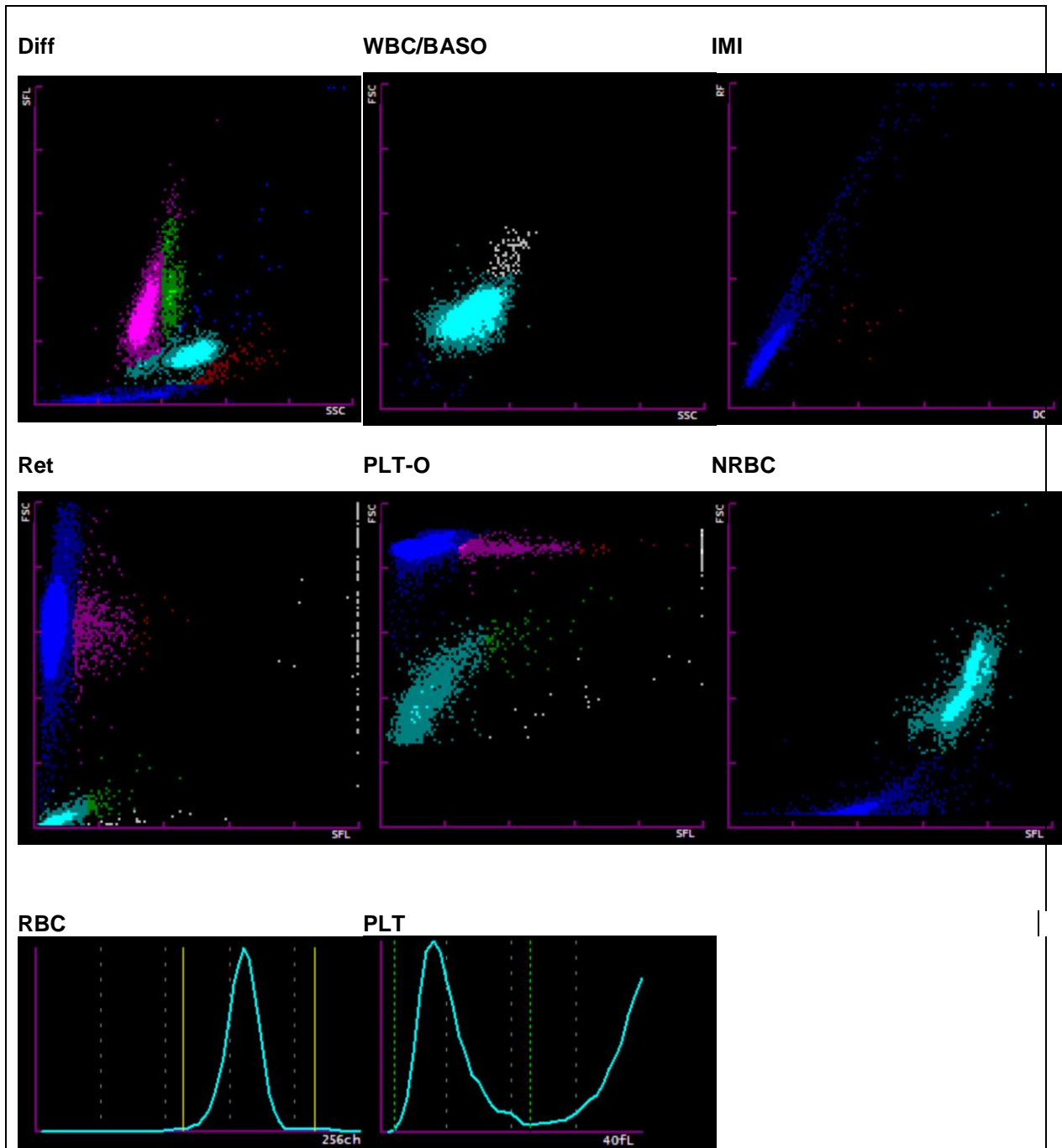


### Findings MQ 2018-3 H3B

22 year old man

Analysis	Result	Unit	Reference value
<b>Blood Count</b>			
Hemoglobin	135	g/l	134-170
Hematocrit	0.411	l/l	0.400-0.500
Erythrocytes	5.02	T/l	4.2-5.7
MCV	81.9	fl	80-100
MCH	26.9	pg	26-34
MCHC	328	g/l	310-360
Thrombocytes	* 183	G/l	143-400
Leucocytes	7.79	G/l	3.0-9.6
<b>Leucocyte Differentiation</b>			
Neutrophils	3.04	G/l	1.40-8.00
Monocytes	0.71	G/l	0.16-0.95
Eosinophils	0.03	G/l	0.00-0.70
Basophils	0.05	G/l	0.00-0.15
Lymphocytes	3.96	G/l	1.50-4.00
IG abs.	0.02	G/l	0.00-0.03
IG %	0.03	%	0.0-0.5

Findings HAD MQ 2018-3 H3B

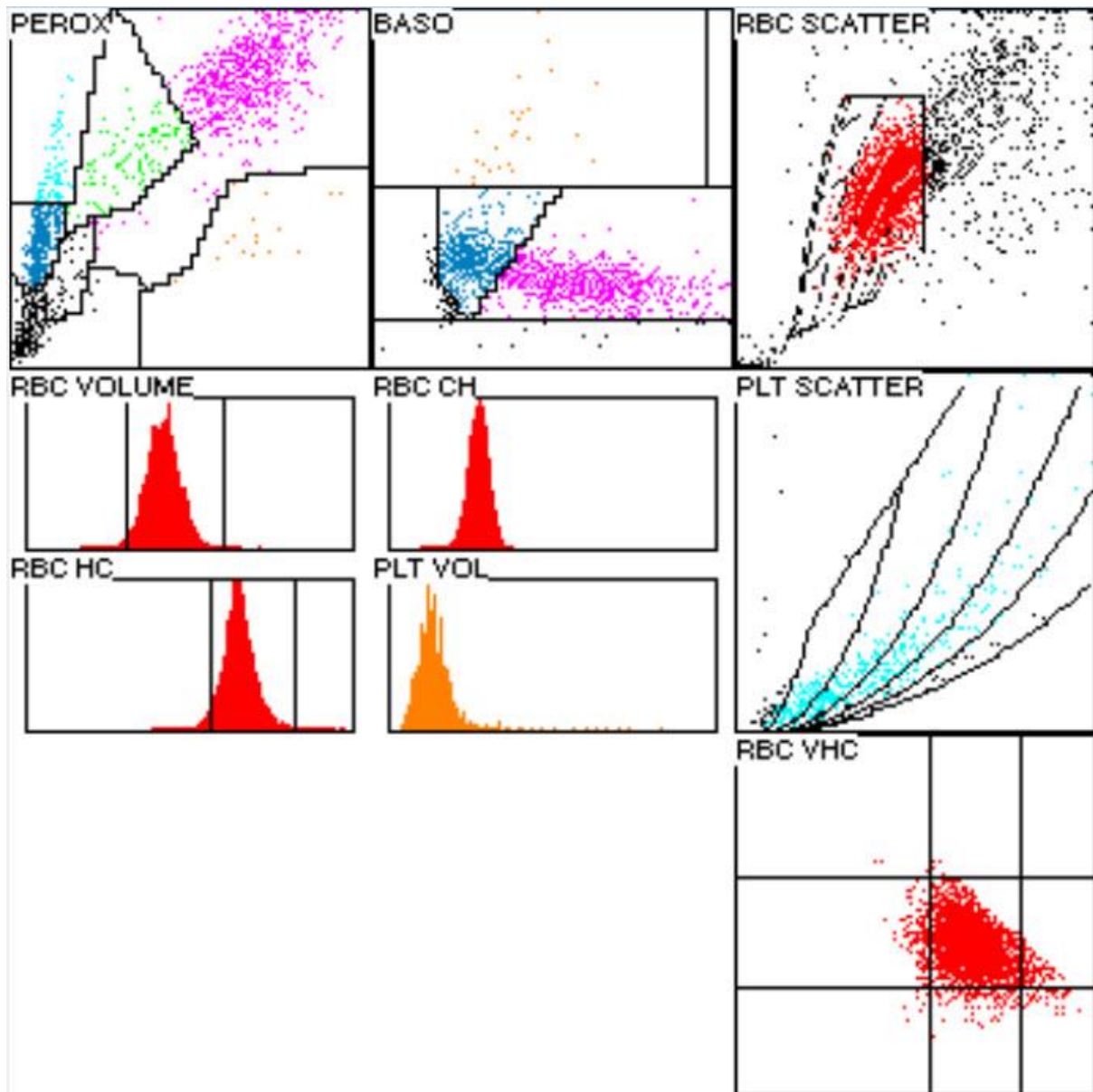


## 2.5 ADVIA 2120



### Findings HAD MQ 2018-3 H3B 22 year old man

Analysis	Result	Unit	Reference value
<b>Blood Count</b>			
Hemoglobin	137	g/l	134-170
Hematocrit	0.416	l/l	0.400-0.500
Erythrocytes	4.99	T/l	4.2-5.7
MCV	83.4	fl	80-100
MCH	27.5	pg	26-34
MCHC	330	g/l	310-360
Mikrocytes	1.2	%	0-2.0
Makrocytes	0	%	0-2.0
Hypochromic Ec	* 3.2	%	0-2.0
Hyerchromic Ec	0.5	%	0-2.0
RDW	12.3	%	11.0-0-14.8
Thrombocytes	210	G/l	143-400
Vd. L-SHIFT	+++	+	Keine (0)
Leukocytes	7.87	G/l	3.0-9.6
<b>Leucocytes Differentiation</b>			
Neutrophils	3.15	G/l	1.40-8.00
Monocytes	0.49	G/l	0.16-0.95
Eosinophils	0.06	G/l	0.00-0.70
Basophils	0.11	G/l	0.00-0.15
Lymphocytes	3.64	G/l	1.50-4.00
LUC	* 0.41	%	0.0-4.0



## 2.6 Differential Blood Smear

### Findings MQ 2018-3 H3B

22 year old man

Analysis	Result	Unit	Reference value
<b>Leucocytes Differentiation</b>			
Neutrophils total	2.64	G/l	1.40-8.00
Monocytes	0.24	G/l	0.16-0.95
Eosinophils	0.04	G/l	0.00-0.70
Basophils	0.00	G/l	0.00-0.15
Lymphocytes	* 4.96	G/l	1.50-4.00
Neutrophils total	* 33.5	%	40.0-74.0
Neutrophils Band	7.5	%	0.0-20.0
Neutrophils Segmented	* 26.0	%	30.0-50.0
Monocytes	* 3.0	%	3.4-9.0
Eosinophils	0.5	%	0.0-7.0
Basophils	0.0	%	0.0-1.5
Lymphocytes	* 63.0	%	19.0-48.0
Plasmacells	0.0	%	0-0.5
Blasts	0.0	%	0
Promyelocytes	0.0	%	0
Myelocytes	0.0	%	0
Metamyelocytes	0.0	%	0
Others/ damaged cells	00.0	%	0

### Commentary

Red blood picture mildly hypochromic, normocytic. Tendency towards rouleaux formation. Neutrophil granulocytes with fine cytoplasmic granulation. Lymphocytes atypical, with marked reactive changes. Thrombocytes morphologically unremarkable. CH/Dr. C. Widmer

K. Schreiber / PD. Dr. St. Balabanov

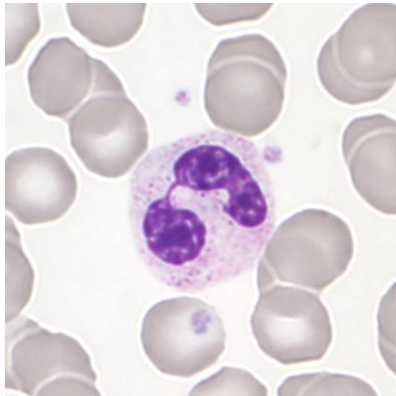


Abb 1. Neutrophil (Seg)

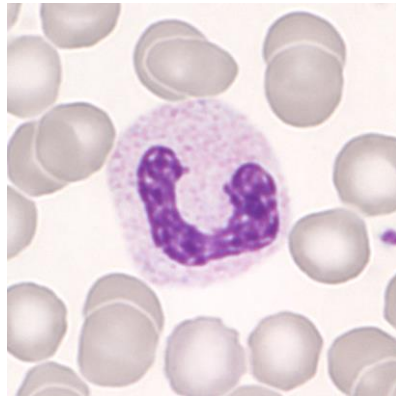


Abb 2. Neutrophil (Band)

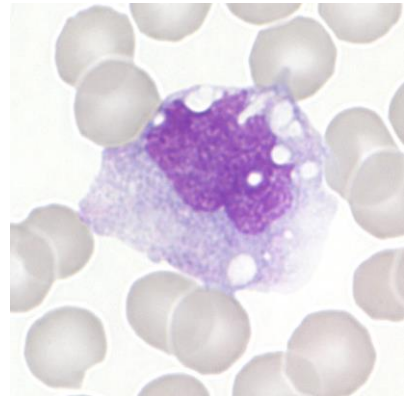


Abb 3. Monocyte

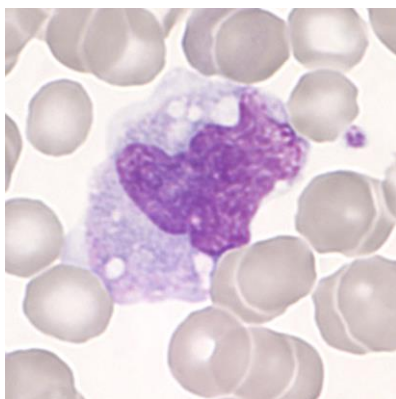


Abb 4. Monocyte

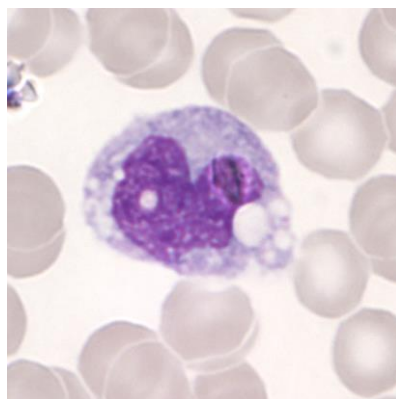


Abb 5. Monocyte

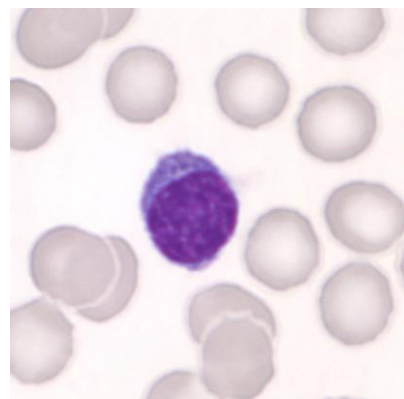


Abb 6. Lymphocyte

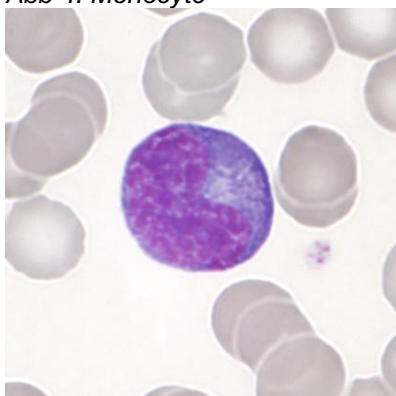


Abb 7. Lymphocyte(reactive)

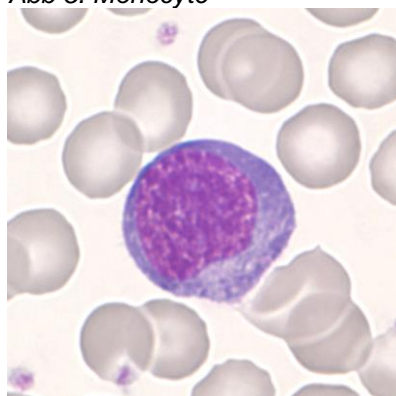


Abb 8. Lymphocyte (reactive)

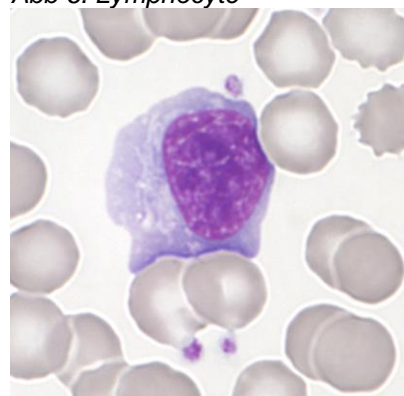


Abb 9. Lymphocyte (reactive)

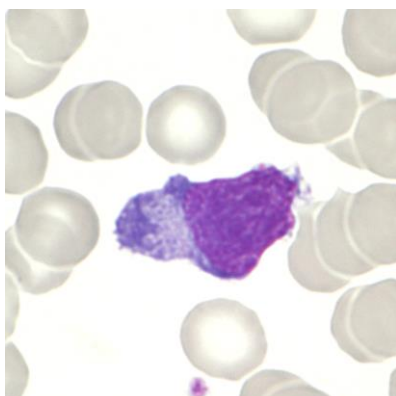


Abb 10. Lymphocyte(reactive)

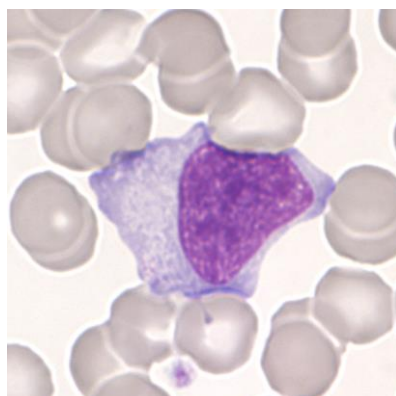


Abb 11. Lymphocyte(reactive)

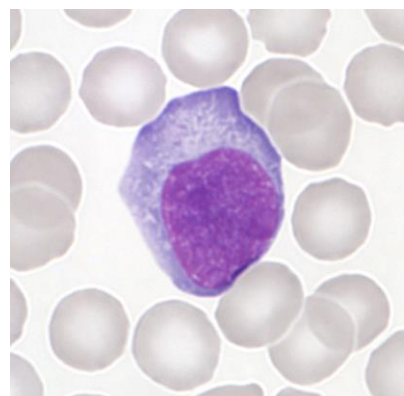


Abb 12. Lymphocyte(reactive)



## 2.7 Summary of participant results

### Leukocyte Differential H3-B

	<1	1-4	5-9	10-19	20-29	30-39	40-49	50-59	60-69	70-79	>79
<i>Neutrophils Band</i>		12	38	142	82	8					
<i>Neutrophils Segmented.</i>			15	133	100	28	6				
<i>Eosinophils</i>	190	89	3								
<i>Basophile</i>	261	19	1	1							
<i>Monocytes</i>	12	134	99	30	5	1		1			
<i>Lymphocytes</i>	2	0	1	5	14	19	47	120	70	4	0
<i>Plasmacells</i>	244	29	4	2	2		1				
<i>Blasts</i>	250	19	3	5	4	1					
<i>Promyelocytes</i>	278	2	1			1					
<i>Myelocytes</i>	262	11	2	3	1	1	1	1			
<i>Metamyelozyten</i>	265	14	3								
<i>Erythrocytes Nucleated</i>	270	12									
<i>Unknown</i>	249	12	6	7	1	4	1	1	1		
<i>Smudge cells</i>	235	21	14	11	1						

### Evaluation H3-B

	<i>light</i>	<i>medium</i>	<i>strong</i>		<i>light</i>	<i>medium</i>	<i>strong</i>
<i>Hypersegmentation</i>	8		2	<i>Hypochromic Ec</i>	65	13	3
<i>Pelger-Huet Anomaly</i>	1	2		<i>Polychromatic Ec</i>	46	5	1
<i>Coarse Granulation</i>	79	24	2	<i>Anisocytes</i>	124	30	
<i>Basophilic Stripling</i>	14	2		<i>Mikrocytes</i>	76	9	
<i>Vacuoles</i>	43	10	1	<i>Makrocytes</i>	22	7	
<i>Atypical Lymph, reactive</i>	34	82	76	<i>Megalocytes</i>	5	2	
<i>Atypical Lymph, neoplastic</i>	2	3	7	<i>Poikilocytosis</i>	49	10	3
<i>Others</i>	17	7	6	<i>Ovalocytes</i>	20	4	1
				<i>Target Cells</i>	31	17	3
				<i>Akanthocytes</i>	26	5	
<i>Anisocytosis</i>	87	24	2	<i>Echinocytes</i>	41	16	10
<i>Megakaryocyte Nucleaus</i>	14	2		<i>Sickle Cells</i>		1	
<i>Granulation</i>	15	4		<i>Fragmentocytes</i>	9		
<i>Others</i>	2	1		<i>Spherocytes</i>	1		
				<i>Stomatocytes</i>			
				<i>Basophilic Stripling</i>	5		
				<i>Howell-Jolly Bodies</i>	3		
				<i>Pappenheim Bodies</i>	1		
				<i>Others</i>	6	2	

### Commentary

The smear is from a patient with an EBV-infection.



## 2.8 Qualab Codes

Summary of the participant codes  
(Bold printed: expected codes)

Code	Text	Number
<b>5</b>	<b>Atypical lymphocytes, probably reactive</b>	<b>172</b>
<b>30</b>	<b>Pathologic findings, refer to expert</b>	<b>169</b>
<b>31</b>	<b>Pathologic findings</b>	<b>74</b>
2	Neutrophils, left shift	41
12	Microcytes	37
6	Atypical lymphocytes, probably neoplastic	34
14	Hypochromic Erythrocytes	34
4	Neutrophils, Toxic Changes	31
19	Targetcells	30
16	Poikilocytosis	29
27	Erythrocytes, other	23
9	Macrothrombocytes	22
15	Polychromatophilic Red Cells	16
13	Macrocytes	15
10	Thrombocyte aggregates	12
8	Leucocytes other:	11
29	Normal findings	11
22	Rouleaux	10
11	Thrombocytes, others	5
17	Elliptocytes/Ovalocytes	3
25	Basophilic strippling	3
26	Teardrops	3
20	Fragmentocytes	2
24	Howell-Jolly bodies	2
3	Pelger Hüet Anomaly	1
7	Auer rods	1
21	Spherocytes	1
99	Total	267