

Verein für  
Association pour le  
Associazione per il



medizinische Qualitätskontrolle  
contrôle de qualité médical  
controllo di qualità medico

Report

# Differential Blood Smear H3

MQ 2022-3

## Acknowledgements

The Mythic 18 analyzer was provided by the company Polymed, the ABX Microsemi CRP analyzer by the company Axonlab and the XP-300 analyzer by the Firma Sysmex. MQ employees conducted the measurements.

The findings of the XE-5000 and ADVA 2120 devices and of the microscopic blood counts were generated by the Central Laboratory of Medical Diagnostic HAD of the University Hospital Zurich Hematology Clinic. The lab is ISO/IEC 17025 certified (STS 445). Dr. J-D. Studt is the responsible manager; Prof. MG Manz, M.D., the clinic director.

[www.haematologie.usz.ch](http://www.haematologie.usz.ch)

For information regarding all analyses offered by the University Hospital of Zurich, see:

[www.uzl.usz.ch](http://www.uzl.usz.ch)

(c) 2022 Verein für medizinische Qualitätskontrolle

# Index

<b>1</b>	<b>SAMPLE A</b>	<b>4</b>
1.1	ABX Microsemi CRP	4
1.2	Mythic	5
1.3	Sysmex XP300	6
1.4	Zybio Z3 CRP	7
1.5	Sysmex XN-20	8
1.6	ADVIA 2120	10
1.7	Differential Blood Smear	12
1.8	Summary of participant results	14
1.9	Qualab Codes	15
<b>2</b>	<b>SAMPLE B</b>	<b>16</b>
2.1	ABX Microsemi CRP	16
2.2	Sysmex XP300	17
2.3	Zybio Z3 CRP	18
2.4	Sysmex XN-20	19
2.5	ADVIA 2120	21
2.6	Differential Blood Smear	23
2.7	Summary of participant results	25
2.8	Qualab Codes	26

# 1 Sample A

## 1.1 ABX Microsemi CRP



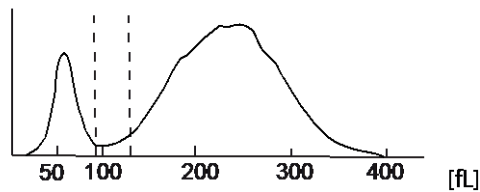
### Findings MQ 2022-3 H3A

74 year old man

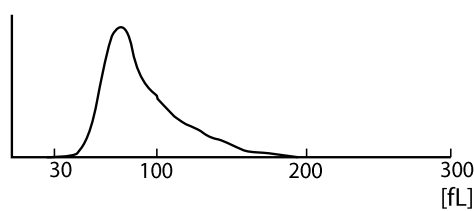
WBC :	15.3	H	10 <sup>3</sup> /μL	MCV :	92.8	μm <sup>3</sup>
RBC :	5.09		10 <sup>6</sup> /μL	MCH :	30.5	pg
HGB :	15.5		g/dL	MCHC:	32.8	g/dL
HCT :	47.3		%	RDW :	14.6	%
PLT :	358		10 <sup>3</sup> /μL	MPV :	8.0	μm <sup>3</sup>
PCT :	0.287		%	PDW :	15.5	%

DIFF:						
%LYM:	13.8	L	%	#LYM:	2.1	10 <sup>3</sup> /μL
%MON:	2.2	L	%	#MON:	0.3	10 <sup>3</sup> /μL
%GRA:	84.0	H	%	#GRA:	12.9	H 10 <sup>3</sup> /μL

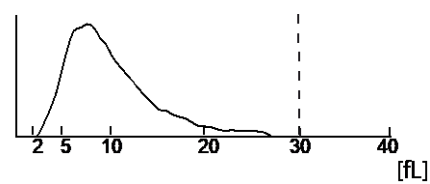
### WBC



### RBC



### PLT



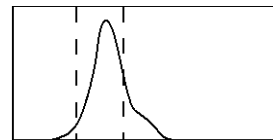
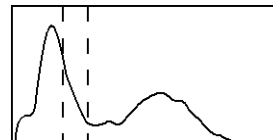
## 1.2 Mythic



### Findings MQ 2022-3 H3A

74 year old man

WBC	5.7	$10^9/l$	3.5 /	10.0
LYM	1.9	$10^9/l$	1.2 /	3.2
MON	0.8	$10^9/l$	0.1 /	1.0
GRA	3.0	$10^9/l$	1.2 /	6.8
LYM%	32.8	%	17.0 /	48.0
MON%	14.9	H %	2.0 /	10.0
GRA%	52.3	%	43.0 /	76.0
RBC	3.52	$10^{12}/l$	4.00 /	5.70
HGB	122	g/l	120 /	180
HCT	0.379	l/l	0.360 /	0.540
MCV	107.7	fl	80.0 /	100.0
MCH	34.7	pg	26.0 /	34.0
MCHC	322	g/l	310 /	365
RDW	13.1	%	10.0 /	16.0
PLT	71	$10^9/l$	150 /	400
MPV	10.5	fl	7.0 /	11.0
PCT	0.075	cl/l	0.100 /	0.500
PDW	13.7	%	10.0 /	18.0



FLAGS : FR2

MONOCYTOSIS MACROCYTOSIS MACROCYTES THROMBOPENIA

### 1.3 Sysmex XP300



**Findings MQ 2022-3 H3A**  
74 year old man

WBC	+	15.3	10 <sup>3</sup> /μL	
RBC		5.23	10 <sup>6</sup> /μL	
HGB		15.8	g/dL	
HCT		47.1	%	
MCV		90.1	fL	
MCH		30.2	pg	
MCHC		33.5	g/dL	
PLT	+	352	10 <sup>3</sup> /μL	
LYM%	-	13.2	%	
MXD%	-	0.9	%	
NEUT%	+	85.9	%	
LYM#		2.0	10 <sup>3</sup> /μL	
MXD#	-	0.1	10 <sup>3</sup> /μL	
NEUT#	+	13.2	10 <sup>3</sup> /μL	
RDW_SD	+	52.0	fL	
RDW_CV		15.4	%	
PDW		13.3	fL	
MPV		10.4	fL	
P_LCR		28.0	%	
PCT	+	0.37	%	

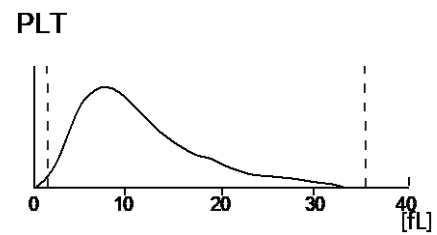
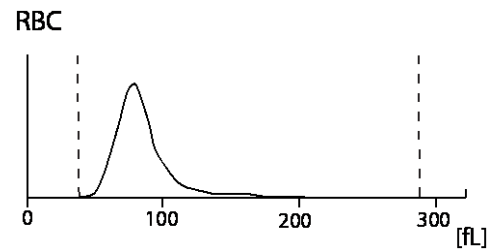
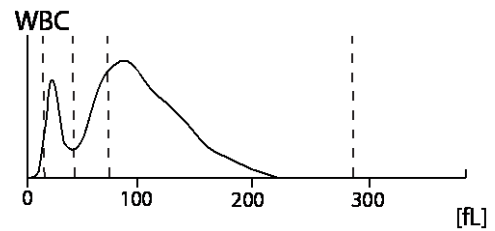
### 1.4 Zybio Z3 CRP



#### Findings MQ 2022-3 H3A

74 year old man

WBC	15.45	↑	10 <sup>3</sup> /μl	3.50-9.50
Lym#	2.47		10 <sup>3</sup> /μl	1.10-3.20
Mid#	1.14		10 <sup>3</sup> /μl	0.10-3.20
Gran#	11.84	↑	10 <sup>3</sup> /μl	1.80-6.30
LYM%	16.0	↓	%	20.0-50.0
Mid%	7.4		%	3.0-15.0
GRAN%	76.6	↑	%	40.0-75.0
RBC	5.40		10 <sup>6</sup> /μl	3.80-5.80
HGB	16.2		g/dl	11.5-17.5
HCT	46.3		%	35.0-50.0
MCV	85.8		fl	82.0-100.0
MCH	29.9		pg	27.0-34.0
MCHC	34.9		g/dl	31.6-35.4
RDW-CV	16.0		%	11.5-16.0
RDW-SD	45.7		fL	35.0-56.0
PLT	350		10 <sup>3</sup> /μl	125-350
MPV	10.3		fl	6.5-12.0
PDW	16.5		fl	9.0-17.0
PCT	0.359	↑	%	0.108-0.282
P-LCC	100	↑	10 <sup>3</sup> /μl	30-90
P-LCR	28.5		%	11.0-45.0



## 1.5 Sysmex XN-20



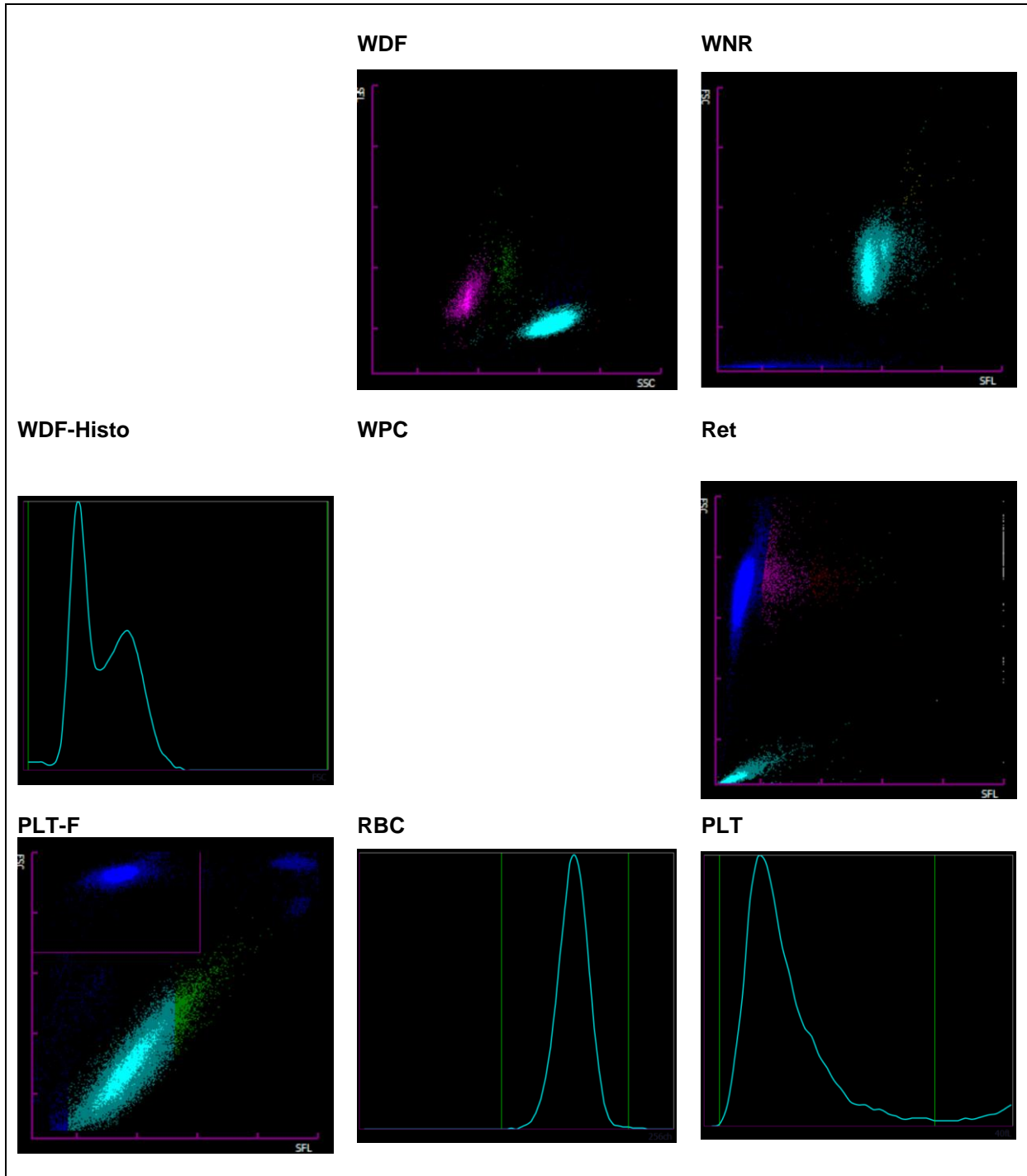
### Findings MQ 2022-3 H3A

74 year old man

Analysis	Result	Unit	Reference value
<b>Blood Count</b>			
<u>Hemoglobin</u>	161	g/l	117-153
<u>Hematocrit</u>	0.488	l/l	0.35-0.46
Erythrocytes	5.33	T/l	3.9-5.2
MCV	91.6	fl	80-100
MCH	30.2	pg	26-34
MCHC	330	g/l	310-360
Mikrocytes	* 15.3	%	11.0-14.8
<u>Thrombocytes</u>	355	G/l	143-400
<u>Leucocytes</u>	* 15.47	G/l	3.0-9.6
<b>Leucocyte Differentiation</b>			
Neutrophils	* 12.95	G/l	1.40 – 8.00
Monocytes	0.24	G/l	0.16 – 0.95
Eosinophils	0.01	G/l	0.00 – 0.70
Basophils	0.03	G/l	0.00-0.15
Lymphocytes	2.15	G/l	1.50 - 4.00
IG abs.	* 0.09	G/l	0.00 – 0.03
IG %	* 0.6	%	0.0 – 0.05
NRBC abs.	0.00	G/l	
NRBC	0.0	/100 Lc	



Findings HAD MQ 2022-3 H3A



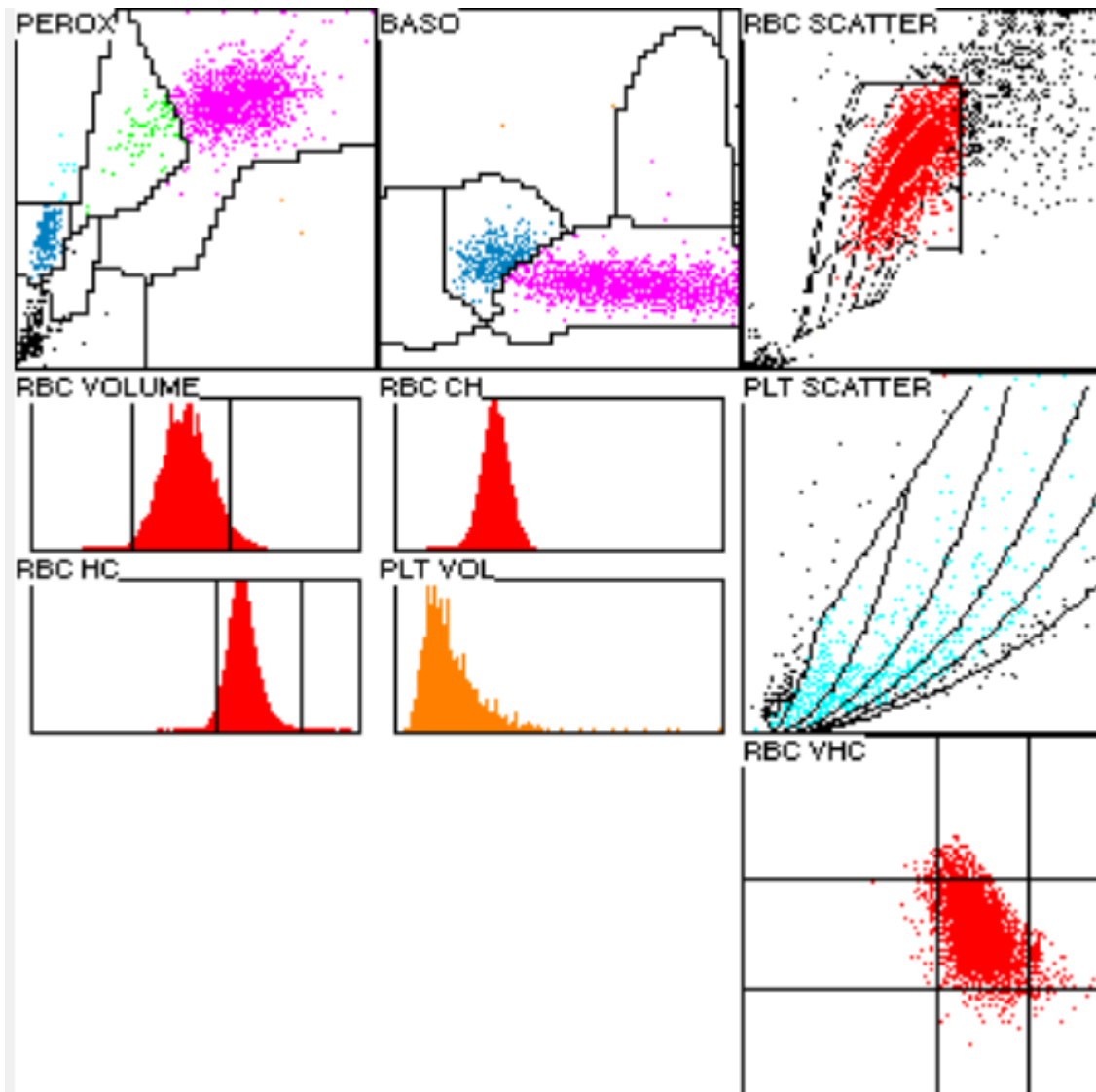
## 1.6 ADVIA 2120



### Findings HAD MQ 2022-2 H3A

74 year old man

Analysis	Result	Unit	Reference value
<b>Blood Count</b>			
<u>Hemoglobin</u>	158	g/l	117-153
<u>Hematocrit</u>	0.501	l/l	0.35-0.46
Erythrocytes	5.30	T/l	3.9-5.2
MCV	94.5	fl	80-100
MCH	29.9	pg	26-34
MCHC	316	g/l	310-360
Mikrocytes	0.6	%	0-2.0
Macrocytes	* 3.6	%	0-2.0
Hypochromic Ec	* 2.5	%	0-2.0
Hyperchromic Ec	0.3	%	0-2.0
RDW	* 15.5	%	11.0-14.8
<u>Thrombocytes</u>	305	G/l	143-400
Vd. L-SHIFT	0	+	Keine (0)
<u>Leucocytes</u>	* 14.65	G/l	3.0-9.6
<b>Leucocyte Differentiation</b>			
Neutrophils	* 12.4	G/l	1.40-8.00
Monocytes	0.23	G/l	0.16-0.95
Eosinophils	0.01	G/l	0.00-0.70
Basophile	0.01	G/l	0.00-0.15
Lymphocytes	1.96	G/l	1.50-4.00
LUC	0.05	%	0.0-4.0



## 1.7 Differential Blood Smear

### Findings HAD MQ 2022-1 H3A

74 year old man

Analysis		Result	Unit	Reference value
Neutrophils total	*	12.75	G/l	1.40-8.00
Monocytes	*	0.07	G/l	0.16-0.95
Eosinophils		0.00	G/l	0.00-0.70
Basophils		0.00	G/l	0.00-0.15
Lymphocytes		1.83	G/l	1.50-4.00
Neutrophils total	*	87.0	%	40.0-74.0
Neutrophils Band		13.0	%	0.0-20.0
Neutrophils Segmented	*	74.0	%	30.0-50.0
Monocytes	*	0.5	%	3.4-9.0
Eosinophils		0.0	%	0.0-7.0
Basophils		0.0	%	0.0-1.5
Lymphocytes	*	12.5	%	19.0-48.0
Plasmacells		0.0	%	0-0.5
Blasts		0.0	%	0
Promyelocytes		0.0	%	0
Myelocytes		0.0	%	0
Metamyelocytes		0.0	%	0
Nucleated Red Cells		0.0	%	0

### Commentary

Red blood count normochromic, slightly anisocytic with few macrocytes. Marked poikilocytosis with many echinocytes. Neutrophil granulocytes with fine cytoplasmic granulation. Slight anisocytosis of the platelets.

Dr.J.-D. Studt/ Dr. S. Balabanov

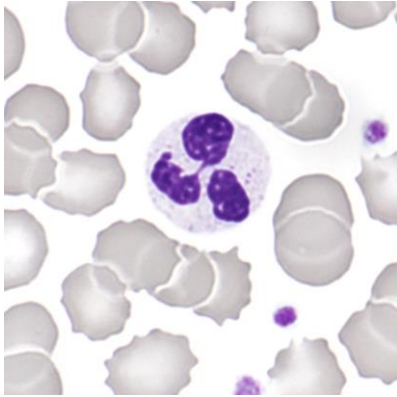


Abb 1. Neutrophile (Seg)

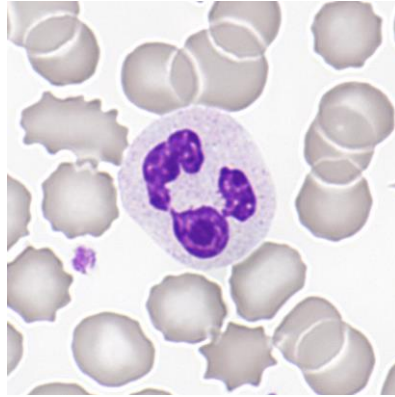


Abb 2. Neutrophile (Hyperseg)

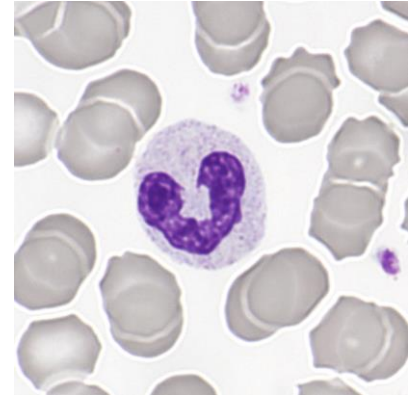


Abb 3. Neutrophile (Band)

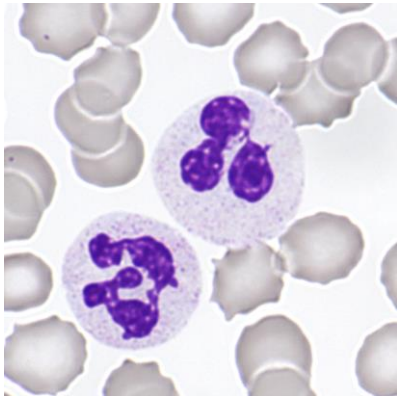


Abb 4. Neutrophile (Seg)

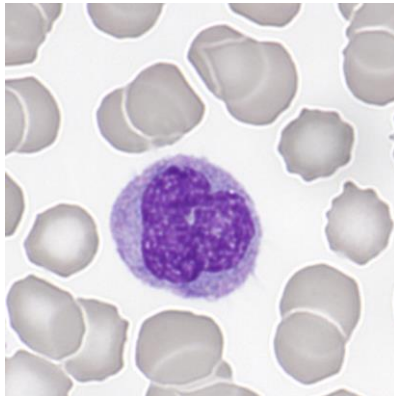


Abb 5. Monocyte

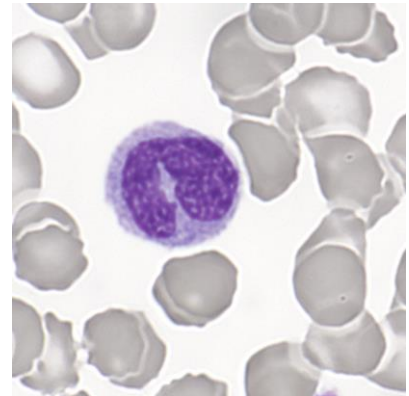


Abb 6. Monocyte

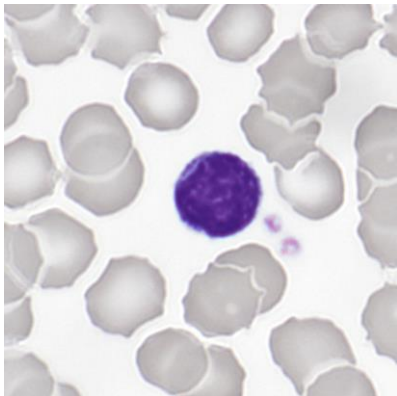


Abb 7. Lymphocyte

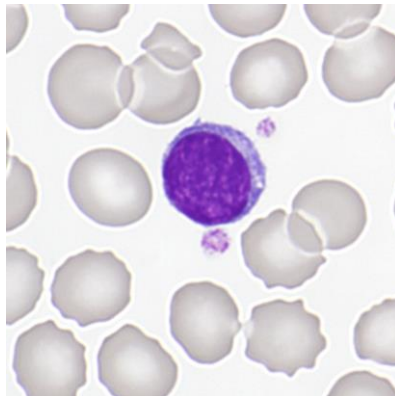


Abb 8. Lymphocyte

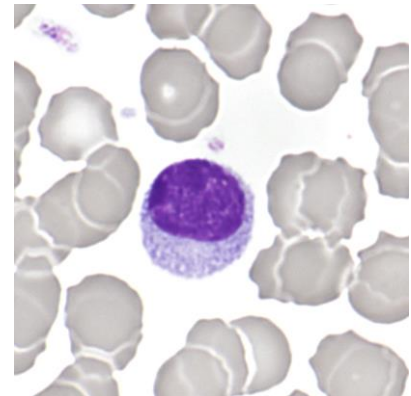


Abb 9. Lymphocyte

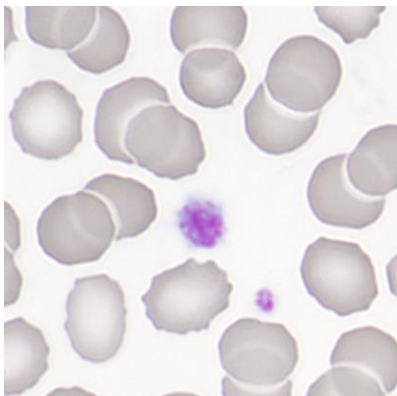


Abb 10. Platelets

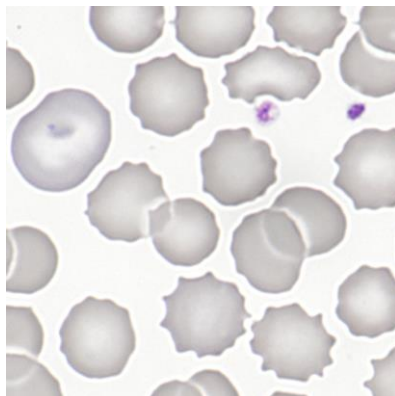


Abb 11. Platelets

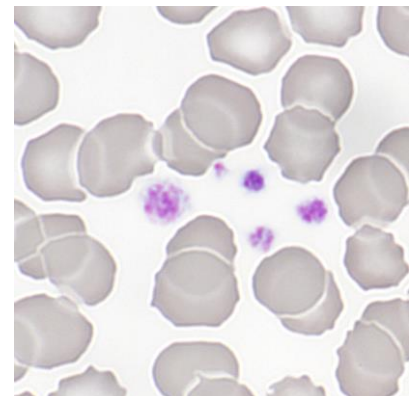


Abb 12. Platelets

## 1.8 Summary of participant results

### Leukocyte Differenzial H3-A

	0	1-4	5-9	10-19	20-29	30-39	40-49	50-59	60-69	70-79	>79
<i>Neutrophils Band</i>		3	29	91*	42	20	5	3	1		
<i>Neutrophils Segmented.</i>					3	4	10	32	70	62*	13
<i>Eosinophils</i>	180*	14									
<i>Basophile</i>	177*	17									
<i>Monocytes</i>	37*	150	7								
<i>Lymphocytes</i>	1		15	165*	13						
<i>Plasmacells</i>	193*			1							
<i>Blasts</i>	194*										
<i>Promyelocytes</i>	194*										
<i>Myelocytes</i>	191*	1	1	1							
<i>Metamyelozyten</i>	189*	5									
<i>Erythrocytes Nucleated</i>	194*										
<i>Unknown</i>	192*	2									
<i>Smudge cells</i>	184*	7	3								

### Evaluation H3-A

	light	medium	strong		light	medium	strong
<i>Hypersegmentation</i>	18	5	1	<i>Hypochromic Ec</i>	6	2	
<i>Pelger-Hüet Anomaly</i>	1			<i>Polychromatic Ec</i>	12		1
<i>Coarse Granulation</i>	20	2	1	<i>Anisocytes</i>	95	8	1
<i>Basophilic Stripping</i>	5			<i>Mikrocytes</i>	25	3	
<i>Vacuoles</i>	7	2		<i>Makrocytes</i>	29*	6	1
<i>Reaktive Lymphocytes</i>	36	2		<i>Megalocytes</i>	5	1	
<i>Atypical Lymphocytes</i>	3			<i>Poikilocytosis</i>	54	9*	1
<i>Others</i>		1		<i>Ovalocytes</i>	15	2	
				<i>Target Cells</i>	2	1	
				<i>Akanthocytes</i>	17	12	
<i>Anisocytosis</i>	99*	10	1	<i>Echinocytes</i>	57	55*	8
<i>Megakaryocyte Nucleaus</i>	3	1		<i>Sickle Cells</i>	1		
<i>Granulation</i>	14	3		<i>Fragmentocytes</i>	3		
<i>Others</i>	10	1		<i>Spherocytes</i>	7		
				<i>Stomatocytes</i>	1	1	
				<i>Basophilic Stripping</i>	3		
				<i>Howell-Jolly Bodies</i>	1		
				<i>Pappenheim Bodies</i>		1	
				<i>Others</i>	3		1

The blood was from a patient with neutrophilia. H3A had a leukocyte value of 14.65 G/l. You can find this value in the instructions for the round robin test. The participants did not agree whether the blood count was "normal" or "pathological". We therefore refrained from giving a rating.

## 1.9 Qualab Codes

Summary of the participant codes  
(Bold printed: expected codes)

Code	Text	Number
<b>31</b>	<b>Pathologischer Befund</b>	<b>71</b>
<b>2</b>	<b>Linksverschiebung</b>	<b>64</b>
29	Normaler Befund	60
<b>30</b>	<b>Pathologischer Befund, wird weitergeschickt</b>	<b>47</b>
27	Erythrozyten, andere:	42
10	Plättchenaggregate	33
<b>16</b>	<b>Poikilozytose</b>	<b>33</b>
9	Riesenplättchen	25
5	Atypische Lymphozyten, vermutlich reaktiv	20
<b>13</b>	<b>Makrozyten</b>	<b>15</b>
1	Kern-Hypersegmentierung	14
8	Leukozyten, andere:	11
15	Polychromasie	11
12	Mikrozyten	9
22	Geldrollenbildung	8
4	Toxische Veränderung der neutrophilen	7
11	Thrombozyten, andere:	6
17	Elliptozyten/Ovalozyten	5
26	Tränenformen	5
14	Hypochromie	3
21	Sphärozyten/Mikrosphärozyten	3
6	Atypische Lymphozyten, vermutlich neoplastisch	1
7	Auerstäbchen	1
19	Targetzellen	1
24	Howell-Jolly Körperchen	1
<b>99</b>	<b>Total</b>	<b>185</b>

## 2 Sample B

### 2.1 ABX Microsemi CRP



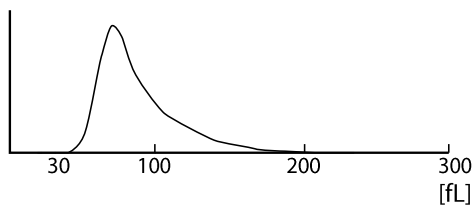
#### Findings MQ 2022-3 H3B

60 year old man

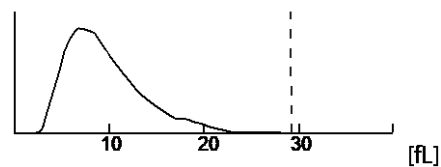
WBC :	9.8	10 <sup>3</sup> /μL	MCV :	89.2	μm <sup>3</sup>
RBC :	5.17	10 <sup>6</sup> / μL	MCH :	29.3	pg
HGB :	15.2	g/dL	MCHC:	32.9	g/dL
HCT :	46.1	%	RDW :	13.5	%
PLT :	209	10 <sup>3</sup> / μL	MPV :	8.0	μm <sup>3</sup>
PCT :	0.168	%	PDW :	15.3	%

%LYM:	28.6	%	#LYM:	2.8	10 <sup>3</sup> /μL
%MON:	6.4	%	#MON:	0.6	10 <sup>3</sup> /μL
%GRA:	65.0	%	#GRA:	6.4	10 <sup>3</sup> /μL

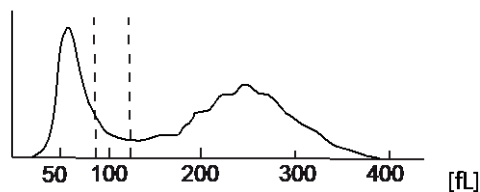
RBC



PLT



WBC

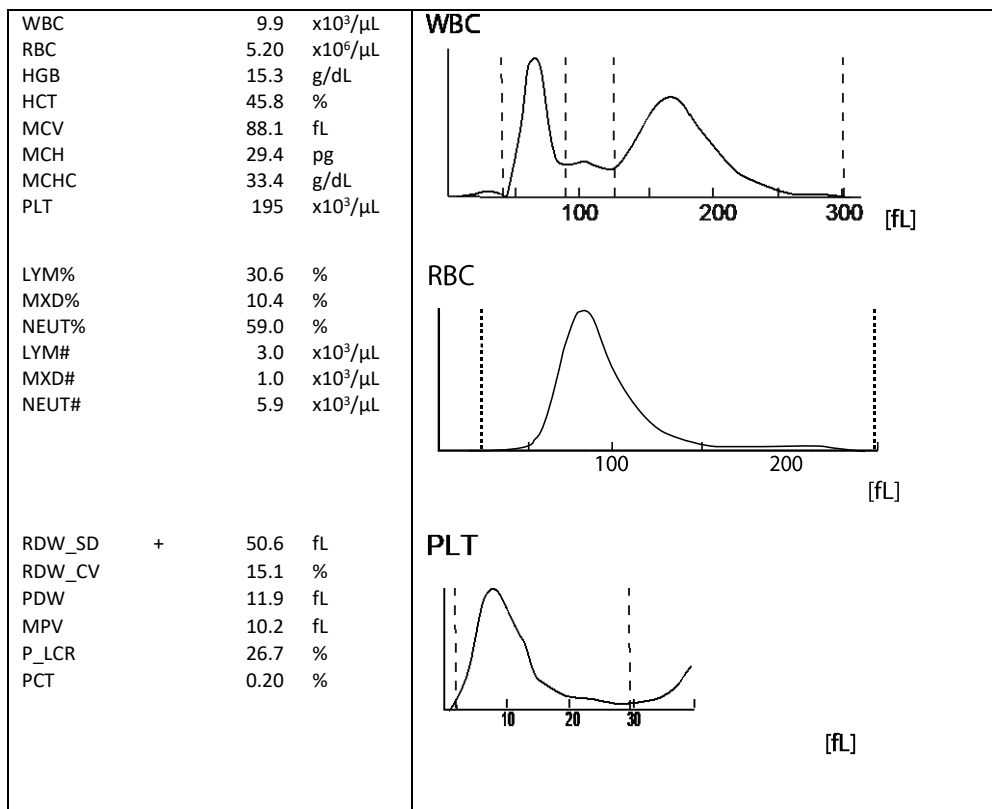




## 2.2 Sysmex XP300



### Findings MQ 2022-3 H3B 60 year old man



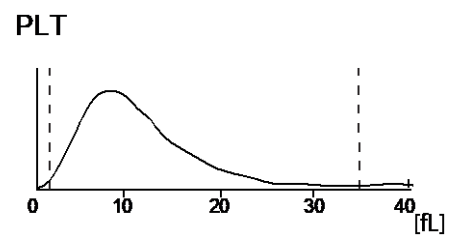
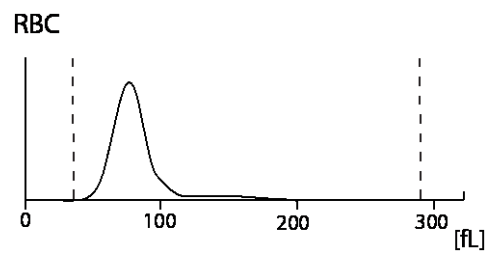
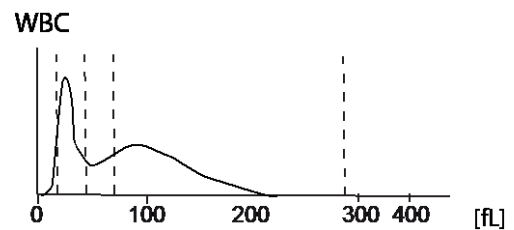
### 2.3 Zybio Z3 CRP



#### Findings MQ 2022-3 H3B

66 year old man

WBC	9.7	↑	10 <sup>3</sup> /μl	3.50-9.50
Lym#	3.21	↑	10 <sup>3</sup> /μl	1.10-3.20
Mid#	0.84		10 <sup>3</sup> /μl	0.10-3.20
Gran#	5.65		10 <sup>3</sup> /μl	1.80-6.30
LYM%	33.1		%	20.0-50.0
Mid%	8.7		%	3.0-15.0
GRA%	58.2		%	40.0-75.0
RBC	5.37		10 <sup>6</sup> /μl	3.80-5.80
HGB	15.7		g/dl	11.5-17.5
HCT	44.6		%	35.0-50.0
MCV	83.1		fl	82.0-100.0
MCH	29.3		pg	27.0-34.0
MCHC	35.3		g/dl	31.6-35.4
RDW-CV	14.6		%	11.5-16.0
RDW-SD	40.1		fL	35.0-56.0
PLT	212		10 <sup>3</sup> /μl	125-350
MPV	9.7		fl	6.5-12.0
PDW	15.9		fL	9.0-17.0
PCT	0.205		%	0.108-0.282
P-LCC	47		10 <sup>3</sup> /μl	30-90
P-LCR	22.4		%	11.0-45.0



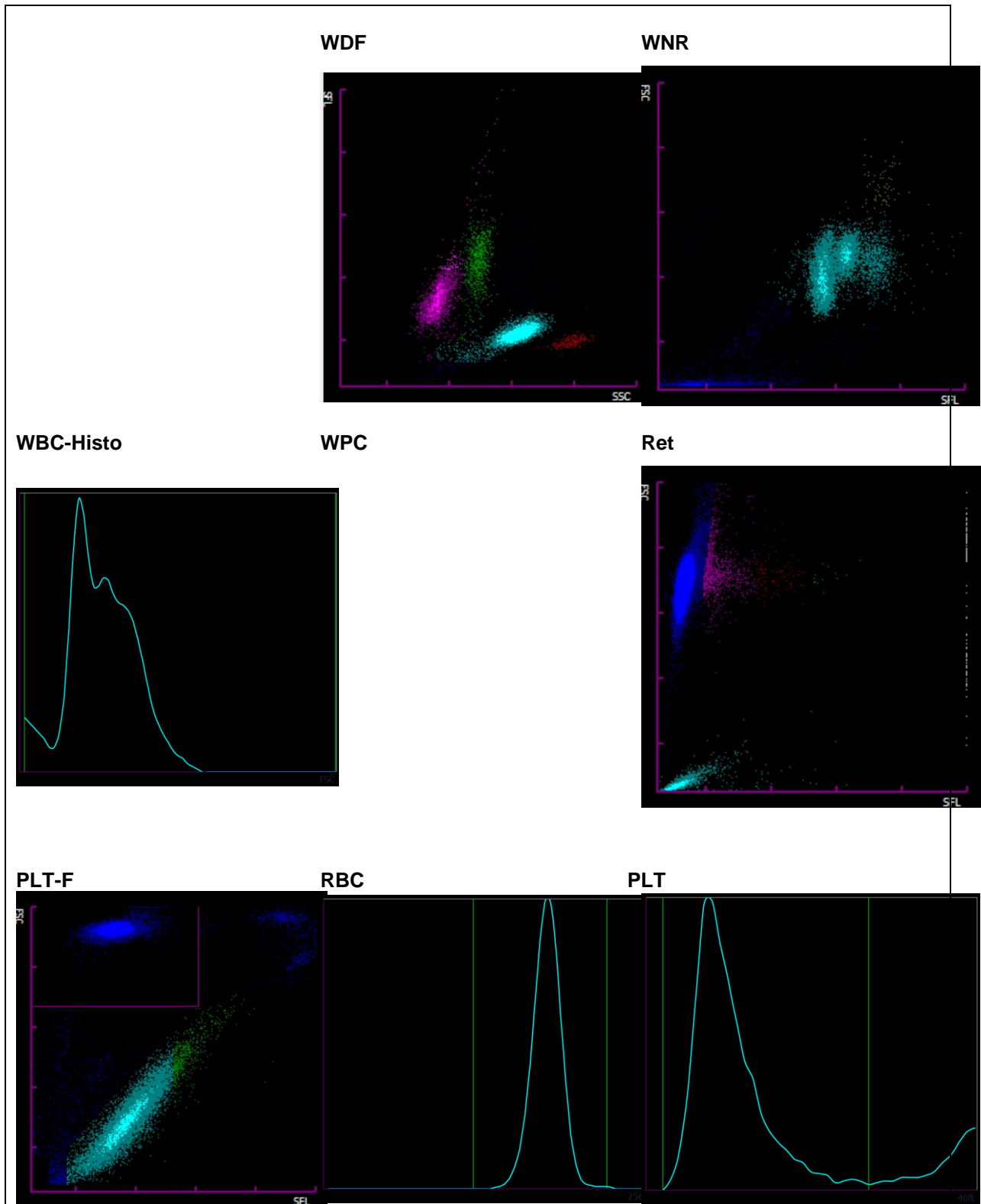
## 2.4 Sysmex XN-20



### Findings HAD MQ 2022-3 H3B 60 year old man

Analysis	Result	Unit	Reference value
<b>Blood Count</b>			
Hemoglobin	159	g/l	117-153
Hematocrit	0.466	l/l	0.35-0.46
Erythrocytes	5.41	T/l	3.9-5.2
MCV	86.1	fl	80-100
MCH	29.4	pg	26-34
MCHC	341	g/l	310-360
Thrombocytes	194	G/l	143-400
Leucocytes	* 10.15	G/l	3.0-9.6
<b>Leucocyte Differentiation</b>			
Neutrophils	5.91	G/l	1.40-8.00
Monocytes	* 0.97	G/l	0.16-0.95
Eosinophils	0.26	G/l	0.00-0.70
Basophils	0.07	G/l	0.00-0.15
Lymphocytes	2.90	G/l	1.50-4.00
IG abs.	* 0.04	G/l	0.00-0.03
IG %	0.4	%	0.0-0.5
NRBC abs.	0.00	G/l	
NRBC	0.0	/100 Lc	

Findings HAD MQ 2022-3 H3B



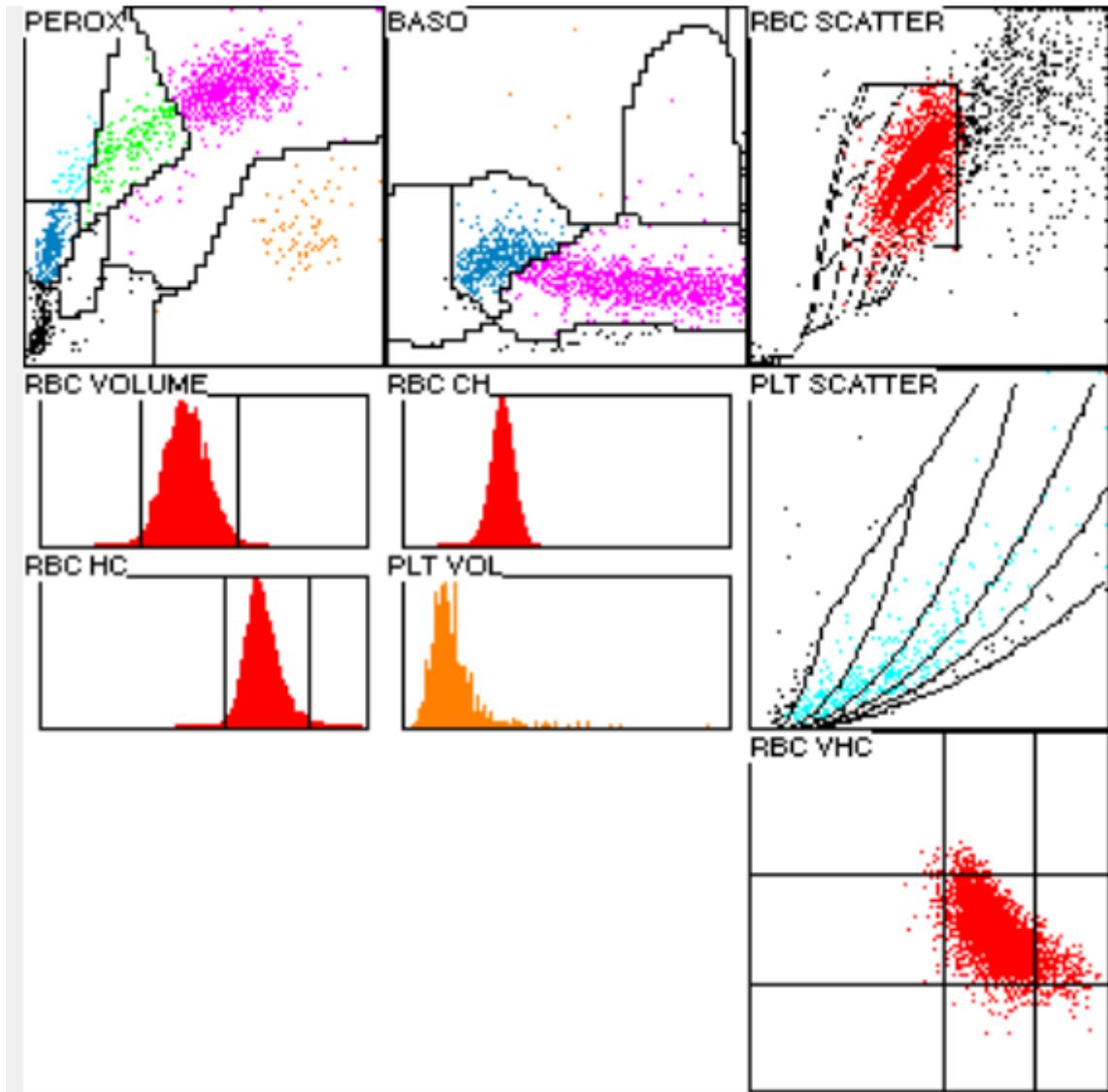
## 2.5 ADVIA 2120



### Findings HAD MQ 2022-3 H3B

60 year old man

Analysis	Result	Unit	Reference value
<b>Blood Count</b>			
Hemoglobin	159	g/l	117-153
Hematocrit	0.480	l/l	0.35-0.46
Erythrocytes	5.39	T/l	3.9-5.2
MCV	89.1	fl	80-100
MCH	29.4	pg	26-34
MCHC	330	g/l	310-360
Mikrocytes	1.0	%	0-2.0
Makrocytes	0.8	%	0-2.0
Hypochromic Ec	0.7	%	0-2.0
Hyerchromic Ec	1.6	%	0-2.0
RDW	14.7	%	11.0-0-14.8
Thrombocytes	165	G/l	143-400
Leukocytes	* 9.86	G/l	3.0-9.6
<b>Leucocytes Differentiation</b>			
Neutrophils	5.97	G/l	1.40-8.00
Monocytes	0.77	G/l	0.16-0.95
Eosinophils	0.26	G/l	0.00-0.70
Basophils	0.03	G/l	0.00-0.15
Lymphocytes	2.63	G/l	1.50-4.00
LUC	0.20	%	0.0-4.0



## 2.6 Differential Blood Smear

### Findings HAD MQ 2022-3 H3B

60 year old man

Analysis	Result	Unit	Reference value
<b>Leucocytes Differentiation</b>			
Neutrophils total	6.16	G/l	1.40-8.00
Monocytes	0.84	G/l	0.16-0.95
Eosinophils	0.35	G/l	0.00-0.70
Basophils	0.00	G/l	0.00-0.15
Lymphocytes	2.51	G/l	1.50-4.00
Neutrophils total	0.0	%	40.0-74.0
Neutrophils Band	62.5	%	0.0-20.0
Neutrophils Segmented	7.0	%	30.0-50.0
Monocytes	* 55.5	%	3.4-9.0
Eosinophils	8.5	%	0.0-7.0
Basophils	3.5	%	0.0-1.5
Lymphocytes	0.0	%	19.0-48.0
Plasmacells	25.5	%	0-0.5
Blasts	0.0	%	0
Promyelocytes	0.0	%	0
Myelocytes	0.0	%	0
Metamyelocytes	0.0	%	0
Others/ damaged cells	0.0	%	0

### Commentary

Red blood count normochromic, normocytic. Marked poikilocytosis with many echinocytes. Neutrophil granulocytes with fine cytoplasmic granulation. Platelets morphologically unremarkable.

K. Schreiber / PD. Dr. St. Balabanov

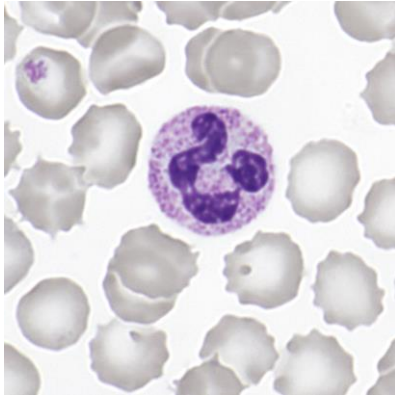


Abb 1. Neutrophil (Seg)

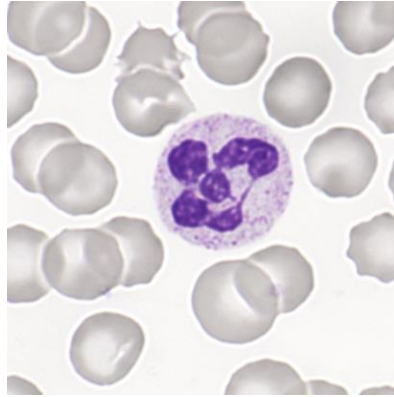


Abb 2. Neutrophil (Seg)

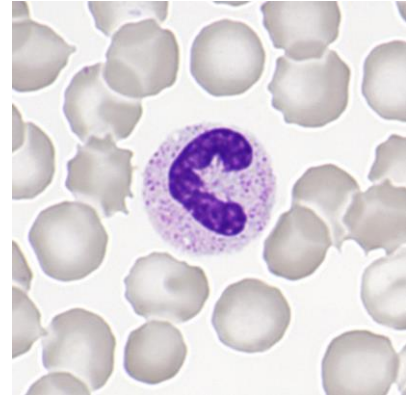


Abb 3. Neutrophil (Band)

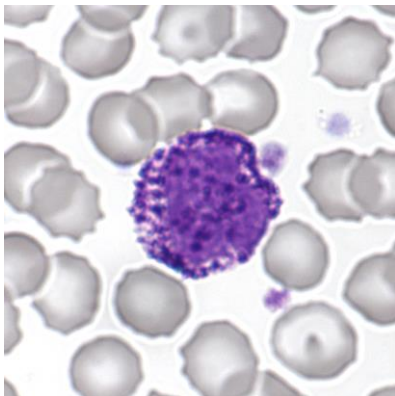


Abb 4. Basophile

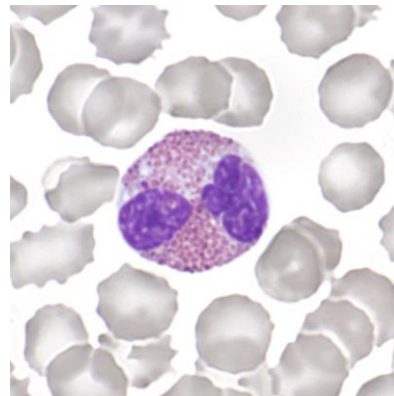


Abb 5. Eosinophile

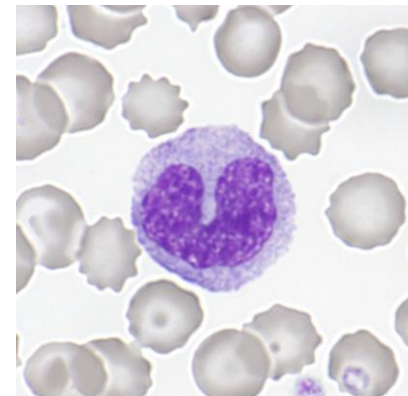


Abb 6. Monocyte

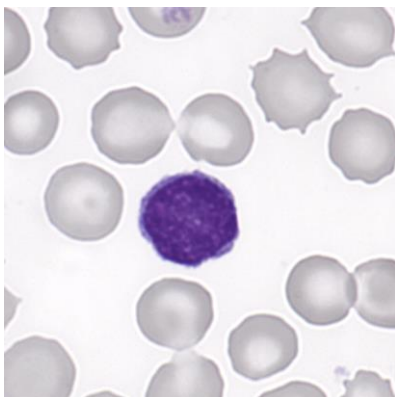


Abb 7. Lymphocyte

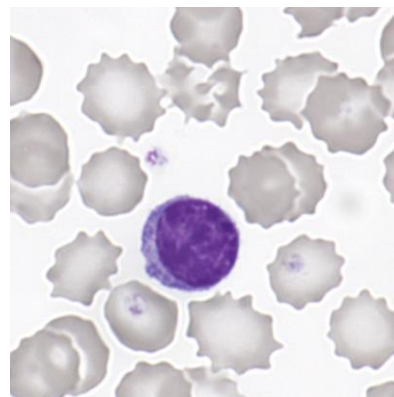


Abb 8. Lymphocyte

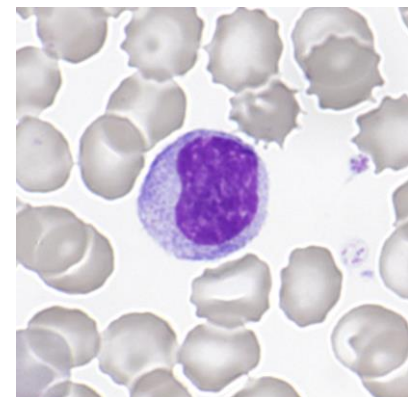


Abb 9. Lymphocyte

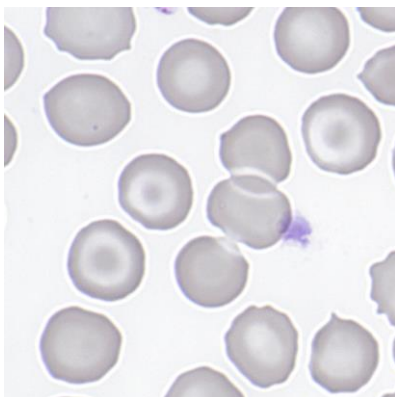


Abb 10. Ec

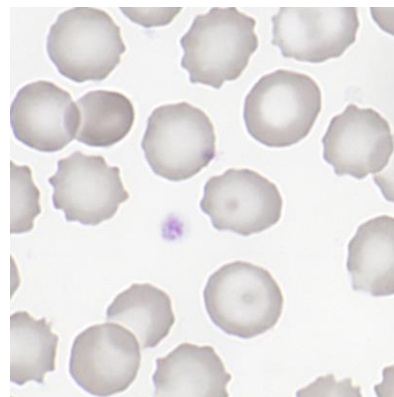


Abb 11. Ec

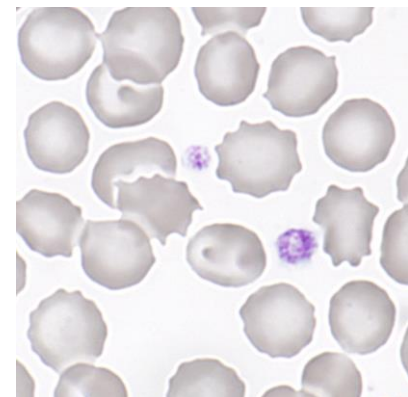


Abb 12. Platelets



## 2.7 Summary of participant results

### Leukocyte Differential H3-B

	<1	1-4	5-9	10-19	20-29	30-39	40-49	50-59	60-69	70-79	>79
<i>Neutrophils Band</i>	3	70	76*	38	5		1				
<i>Neutrophils Segmented.</i>		1			1	10	64	106*	11		
<i>Eosinophils</i>	5	167*	20		1						
<i>Basophile</i>	114*	79									
<i>Monocytes</i>	7	64	104*	18							
<i>Lymphocytes</i>				2	55*	116	20				
<i>Plasmacells</i>	191*	1	1								
<i>Blasts</i>	186*	5	2								
<i>Promyelocytes</i>	190*	2		1							
<i>Myelocytes</i>	188*	3	2								
<i>Metamyelocyten</i>	189*	3	1								
<i>Erythrocytes Nucleated</i>	185*	8									
<i>Unknown</i>	183*	8	2								
<i>Smudge cells</i>	169*	16	7	1							

### Evaluation H3-B

	light	medium	strong		light	medium	strong
<i>Hypersegmentation</i>	5	3	3	<i>Hypochromic Ec</i>	13	2	2
<i>Pelger-Hüet Anomaly</i>	2			<i>Polychromatic Ec</i>	20		1
<i>Coarse Granulation</i>	70	30		<i>Anisocytes</i>	80	25	1
<i>Basophilic Stripling</i>	9			<i>Mikrocytes</i>	38	5	
<i>Vacuoles</i>	15	3		<i>Makrocytes</i>	22	2	
<i>Atypical Lymph, reactive</i>	47	11	2	<i>Megalocytes</i>	2		
<i>Atypical Lymph, neoplastic</i>	12	4		<i>Poikilocytosis</i>	46	18*	3
<i>Others</i>	4	1	1	<i>Ovalocytes</i>	25	2	
				<i>Target Cells</i>	77	23	
				<i>Akanthocytes</i>	41	19	5
<i>Anisocytosis</i>	89	7	3	<i>Echinocytes</i>	34	61*	29
<i>Megakaryocyte Nucleaus</i>	4	1		<i>Sickle Cells</i>	4		
<i>Granulation</i>	12	6		<i>Fragmentocytes</i>	18		
<i>Others</i>	6			<i>Spherocytes</i>	6		
				<i>Stomatocytes</i>	1		
				<i>Basophilic Stripling</i>	2	1	
				<i>Howell-Jolly Bodies</i>	5	1	
				<i>Pappenheim Bodies</i>	1		
				<i>Others</i>	2		

The blood came from a patient with iron deficiency anemia.

## 2.8 Qualab Codes

Summary of the participant codes

(Bold printed: expected codes)

Code	Text	Number
30	Pathologischer Befund, wird weitergeschickt	78
19	Targetzellen	62
31	Pathologischer Befund	54
5	Atypische Lymphozyten, vermutlich reaktiv	44
27	Erythrozyten, andere:	43
<b>29</b>	<b>Normaler Befund</b>	<b>40</b>
4	Toxische Veränderung der neutrophilen	38
<b>16</b>	<b>Poikilozytose</b>	<b>36</b>
9	Riesenplättchen	20
6	Atypische Lymphozyten, vermutlich neoplastisch	17
12	Mikrozyten	11
17	Elliptozyten/Ovalozyten	8
10	Plättchenaggregate	7
11	Thrombozyten, andere:	7
20	Fragmentozyten	6
26	Tränenformen	6
1	Kern-Hypersegmentierung	5
8	Leukozyten, andere:	5
13	Makrozyten	5
15	Polychromasie	5
22	Geldrollenbildung	5
14	Hypochromie	4
2	Linksverschiebung	2
21	Sphärozyten/Mikrosphärozyten	2
24	Howell-Jolly Körperchen	2
25	Basophile Punktierung	2
18	Stomatozyten	1
28	Parasiten	1
<b>99</b>	<b>Total</b>	<b>182</b>