

Verein für  
Association pour le  
Associazione per il



medizinische Qualitätskontrolle  
contrôle de qualité médical  
controllo di qualità medico

Report

# Differential Blood Smear H3

MQ 2023-1

## Acknowledgements

The Zybio Z3 analyzer was provided by the company Polymed, the ABX Microsemi CRP analyzer by the company Axonlab and the XP-300 analyzer by the Firma Sysmex. MQ employees conducted the measurements.

The findings of the XN-20 and ADVA 2120 devices and of the microscopic blood counts were generated by the Central Laboratory of Medical Diagnostic HAD of the University Hospital Zurich Hematology Clinic. The lab is ISO/IEC 17025 certified (STS 445). Prof. Dr. med. Stefan Balabanov is the responsible manager; Prof. MG Manz, M.D., the clinic director.  
[www.haematologie.usz.ch](http://www.haematologie.usz.ch)

For information regarding all analyses offered by the University Hospital of Zurich, see:  
[www.uzl.usz.ch](http://www.uzl.usz.ch)

(c) 2023 Verein für medizinische Qualitätskontrolle

# Index

<b>1</b>	<b>SAMPLE A</b>	<b>4</b>
1.1	ABX Microsemi CRP	4
1.2	Mythic	Fehler! Textmarke nicht definiert.
1.3	Sysmex XP300	4
1.4	Zybio Z3 CRP	5
1.5	Sysmex XN-20	7
1.6	ADVIA 2120	9
1.7	Differential Blood Smear	11
1.8	Summary of participant results	13
1.9	Qualab Codes	14
<b>2</b>	<b>SAMPLE B</b>	<b>15</b>
2.1	ABX Microsemi CRP	Fehler! Textmarke nicht definiert.
2.2	Sysmex XP300	15
2.3	Zybio Z3 CRP	16
2.4	Sysmex XN-20	17
2.5	ADVIA 2120	19
2.6	Differential Blood Smear	21
2.7	Summary of participant results	23
2.8	Qualab Codes	24

# 1 Sample A

## 1.1 ABX Microsemi CRP



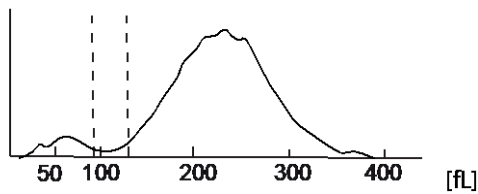
### Findings MQ 2023-1 H3A

73 year old woman

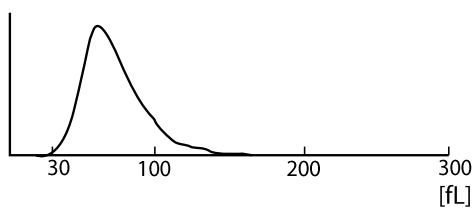
WBC :	20.2	H	10 <sup>3</sup> /μL	MCV :	72.2	L	μm <sup>3</sup>
RBC :	6.60	H	10 <sup>6</sup> /μL	MCH :	22.1	L	pg
HGB :	14.6		g/dL	MCHC:	30.7	L	g/dL
HCT :	47.7		%	RDW :	17.5	H	%
PLT :	291		10 <sup>3</sup> /μL	MPV :	7.8		μm <sup>3</sup>
PCT :	0.228		%	PDW :	20.0	H	%

DIFF:				#LYM:	1.2		10 <sup>3</sup> /μL
%LYM:	6.0	L	%	#MON:	0.4		10 <sup>3</sup> /μL
%MON:	2.2	L	%	#GRA:	18.6	H	10 <sup>3</sup> /μL
%GRA:	91.8	H	%				

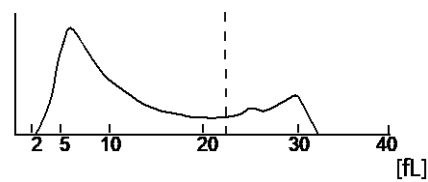
### WBC



### RBC



### PLT



### 1.2 Sysmex XP300



**Findings MQ 2023-1 H3A**  
73 year old woman

WBC	+	20.5	$10^3/\mu\text{L}$	
RBC	+	6.61	$10^6/\mu\text{L}$	
HGB		14.1	g/dL	
HCT	+	49.5	%	
MCV	-	74.9	fL	
MCH	-	21.3	pg	
MCHC	-	28.5	g/dL	
PLT		303	$10^3/\mu\text{L}$	
LYM%	-	4.8	%	
MXD%	-	2.9	%	
NEUT%	+	92.3	%	
LYM#		1.0	$10^3/\mu\text{L}$	
MXD#		0.6	$10^3/\mu\text{L}$	
NEUT#	+	18.9	$10^3/\mu\text{L}$	
RDW_SD	+	50.4	fL	
RDW_CV	+	18.6	%	
PDW		13.0	fL	
MPV		9.5	fL	
P_LCR		25.0	%	
PCT		0.29	%	

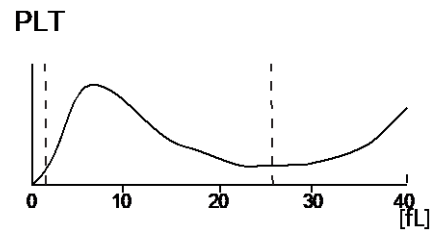
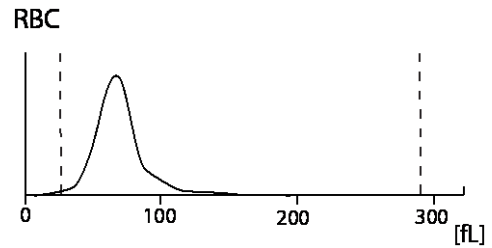
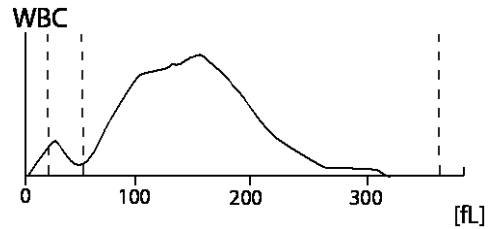
### 1.3 Zybio Z3 CRP



#### Findings MQ 2023-1 H3A

73 year old woman

WBC	20.86	↑	10 <sup>3</sup> /μl	3.50-9.50
Lym#	1.61		10 <sup>3</sup> /μl	1.10-3.20
Mid#	1.73	↑	10 <sup>3</sup> /μl	0.10-3.20
Gran#	17.52	↑	10 <sup>3</sup> /μl	1.80-6.30
LYM%	7.7		%	20.0-50.0
Mid%	8.3		%	3.0-15.0
GRAN%	84.0	↑	%	40.0-75.0
RBC	6.74	↑	10 <sup>6</sup> /μl	3.80-5.80
HGB	15.5		g/dl	11.5-17.5
HCT	47.2		%	35.0-50.0
MCV	69.9	↓	fl	82.0-100.0
MCH	23.0	↓	pg	27.0-34.0
MCHC	32.9		g/dl	31.6-35.4
RDW-CV	19.5	↑	%	11.5-16.0
RDW-SD	45.4		fL	35.0-56.0
PLT	274		10 <sup>3</sup> /μl	125-350
MPV	9.5		fl	6.5-12.0
PDW	16.6		fL	9.0-17.0
PCT	0.261		%	0.108-0.282
P-LCC	73		10 <sup>3</sup> /μl	30-90
P-LCR	26.6		%	11.0-45.0



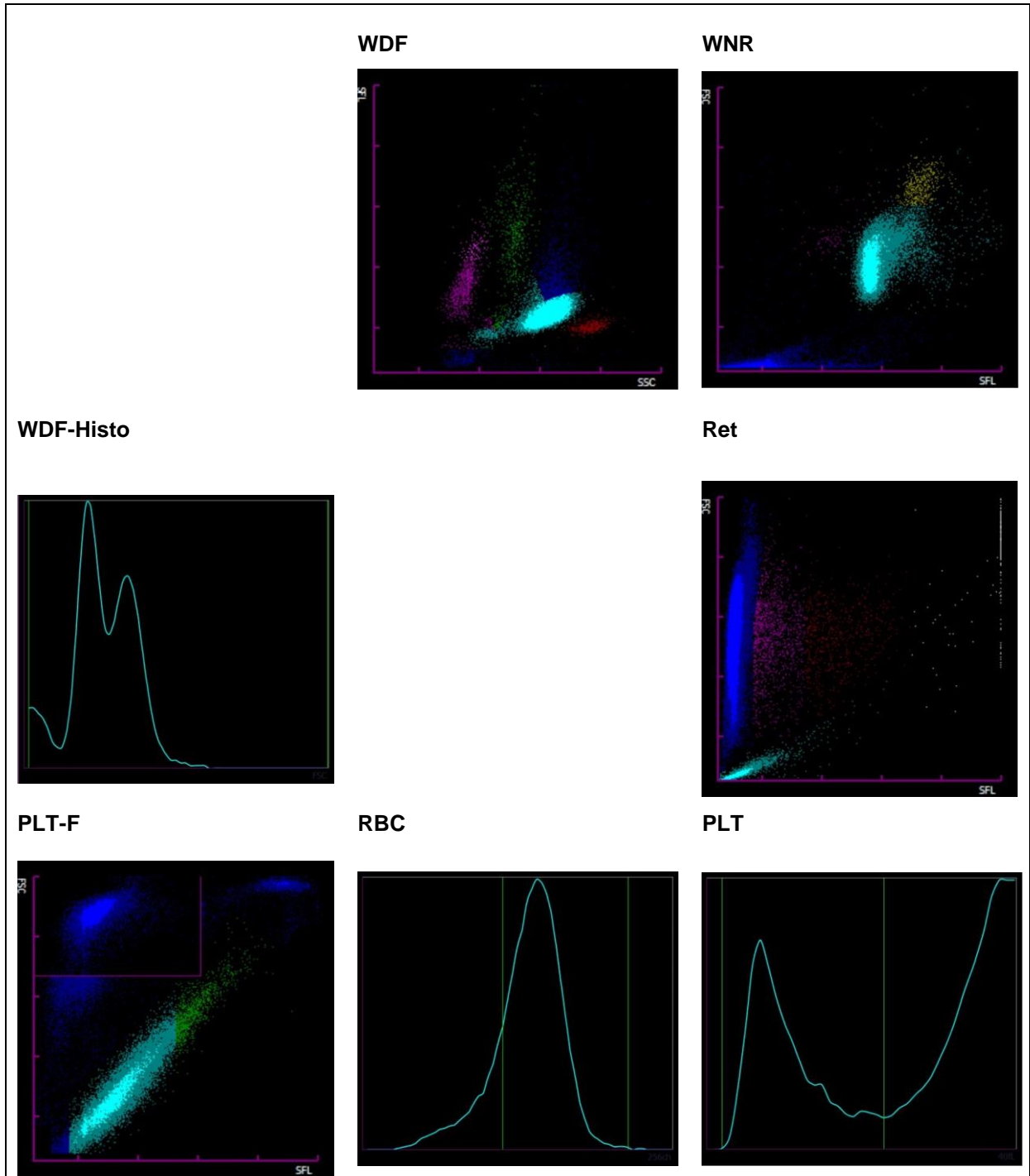
## 1.4 Sysmex XN-20



### Findings MQ 2023-1 H3A 73 year old woman

Analysis	Result	Unit	Reference value
<b>Blood Count</b>			
<u>Hemoglobin</u>	147	g/l	117-153
<u>Hematocrit</u>	0.505	l/l	0.35-0.46
Erythrocytes	6.91	T/l	3.9-5.2
MCV	* 73.1	fl	80-100
MCH	* 21.3	pg	26-34
MCHC	* 291	g/l	310-360
Mikrocytes	* 20.1	%	11.0-14.8
<u>Thrombocytes</u>	313	G/l	143-400
<u>Leucocytes</u>	* 21.43	G/l	3.0-9.6
<b>Leucocyte Differentiation</b>			
Neutrophils	* 17.63	G/l	1.40 – 8.00
Monocytes	0.60	G/l	0.16 – 0.95
Eosinophils	0.37	G/l	0.00 – 0.70
Basophils	* 0.48	G/l	0.00-0.15
Lymphocytes	* 1.00	G/l	1.50 - 4.00
IG abs.	* 1.35	G/l	0.00 – 0.03
IG %	* 6.3	%	0.0 – 0.05
NRBC abs.	0.10	G/l	
NRBC	0.5	/100 Lc	

Findings HAD MQ 2023-1 H3A





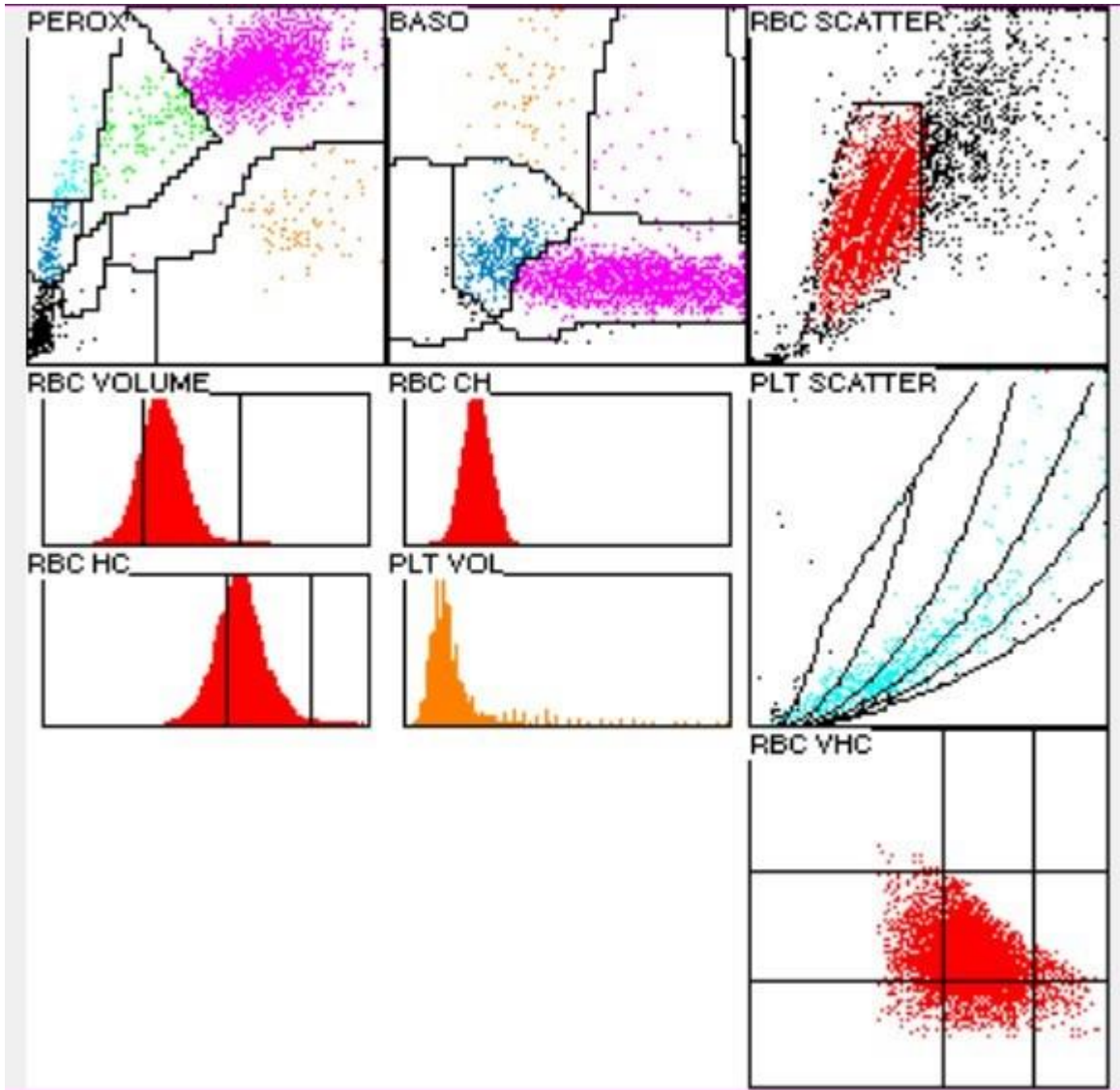
## 1.5 ADVIA 2120



### Findings HAD MQ 2023-1 H3A

73 year old man

Analysis	Result	Unit	Reference value
<b>Blood Count</b>			
<u>Hemoglobin</u>	144	g/l	117-153
<u>Hematocrit</u>	0.481	l/l	0.35-0.46
Erythrocytes	6.62	T/l	3.9-5.2
MCV	* 72.6	fl	80-100
MCH	* 21.7	pg	26-34
MCHC	* 299	g/l	310-360
Mikrocytes	* 16.3	%	0-2.0
Macrocytes	0.1	%	0-2.0
Hypochromic Ec	* 26.2	%	0-2.0
Hyperchromic Ec	0.9	%	0-2.0
RDW	* 17.9	%	11.0-14.8
<u>Thrombocytes</u>	275	G/l	143-400
Vd. L-SHIFT	+	+	Keine (0)
<u>Leucocytes</u>	* 19.92	G/l	3.0-9.6
<b>Leucocyte Differentiation</b>			
Neutrophils	* 17.75	G/l	1.40-8.00
Monocytes	0.44	G/l	0.16-0.95
Eosinophils	1.5	G/l	0.00-0.70
Basophile	1.2	G/l	0.00-0.15
Lymphocytes	* 4.5	G/l	1.50-4.00
LUC	1.6	%	0.0-4.0



## 1.6 Differential Blood Smear

### Findings HAD MQ 2023-1 H3A

73 year old woman

Analysis		Result	Unit	Reference value
Neutrophils total	*	16.93	G/l	1.40-8.00
Monocytes		0.30	G/l	0.16-0.95
Eosinophils		0.40	G/l	0.00-0.70
Basophils	*	0.60	G/l	0.00-0.15
Lymphocytes	*	1.10	G/l	1.50-4.00
Neutrophils total	*	85.0	%	40.0-74.0
Neutrophils Band	*	25.0	%	0.0-20.0
Neutrophils Segmented	*	60.0	%	30.0-50.0
Monocytes	*	1.5	%	3.4-9.0
Eosinophils		2.0	%	0.0-7.0
Basophils	*	3.0	%	0.0-1.5
Lymphocytes	*	5.5	%	19.0-48.0
Plasmacells		0.5	%	0-0.5
Blasts		0.0	%	0
Promyelocytes	*	0.5	%	0
Myelocytes		0.0	%	0
Metamyelocytes	*	2.0	%	0
Nucleated Red Cells		0.0	%	0

### Commentary

Slightly hypochromic, slightly anisocytic red blood count with very many microcytes and few macrocytes. Slight poikilocytosis with few ovalocytes, few stomatocytes as well as individual tear drop shapes detectable on transillumination. Exudation of individual erythroblasts in the perusal and a few clearly maturation-dissociated myeloid precursors, no blasts detectable. Neutrophil granulocytes with slightly coarsened cytoplasmic granulation and fine basophilic streaks. Slight anisocytosis of the partially hypogranulated platelets, few large forms detectable.

Dr.J.-D. Studt/ Dr. S. Balabanov

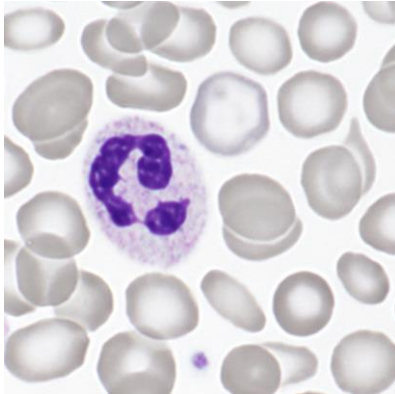


Abb 1. Neutrophile (Seg)

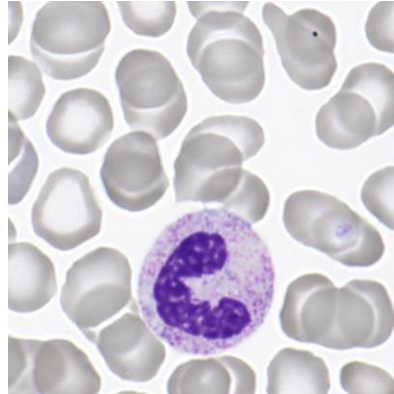


Abb 2. Neutrophile (Rod)

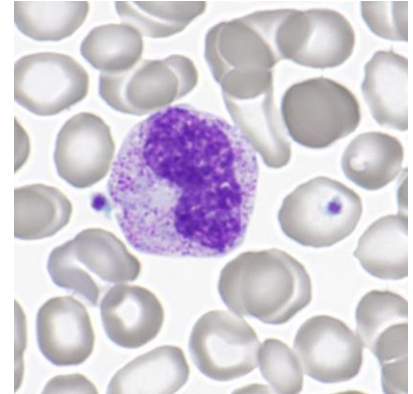


Abb 3. Metamyelozyt

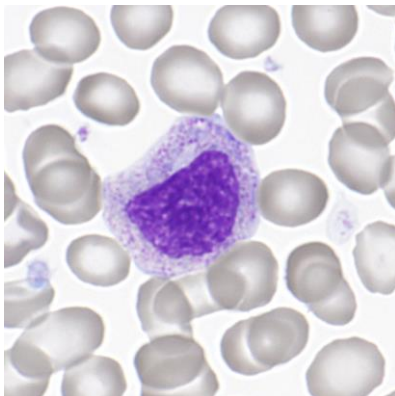


Abb 4. Myelocyte

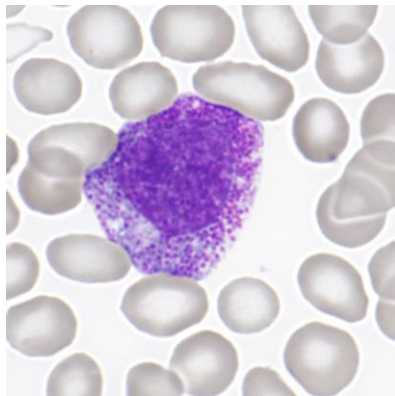


Abb 5. Promyelozyt

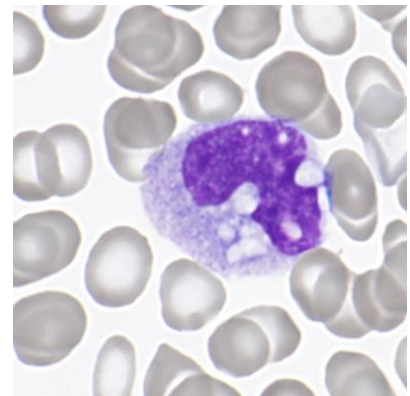


Abb 6. Monocyte

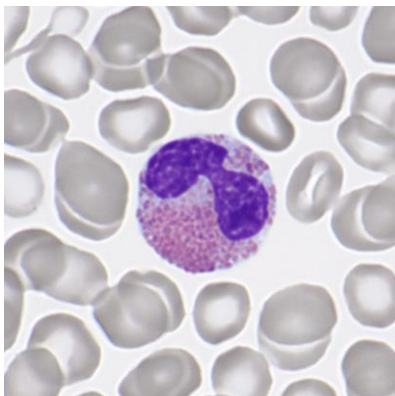


Abb 7. Eosinophile

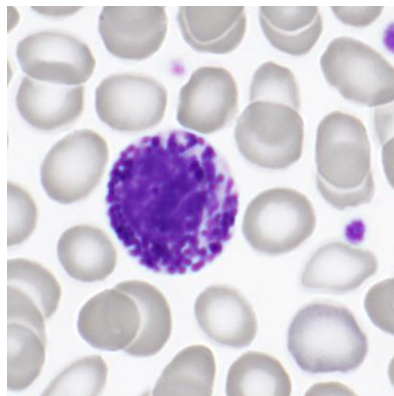


Abb 8. Basophile

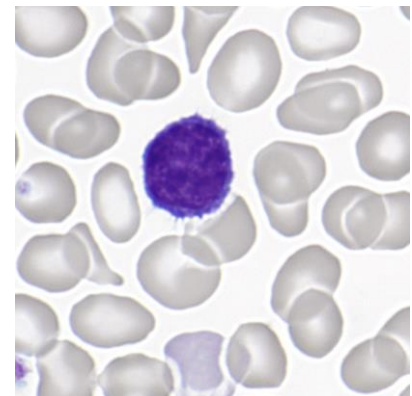


Abb 9. Lymphocyte

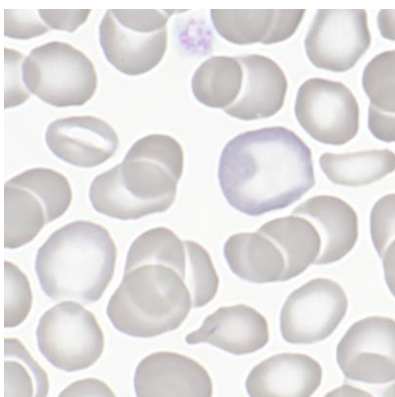


Abb 10. Erythrocytes

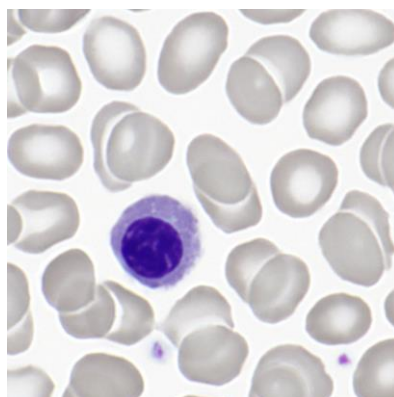


Abb 11. Erythroblast

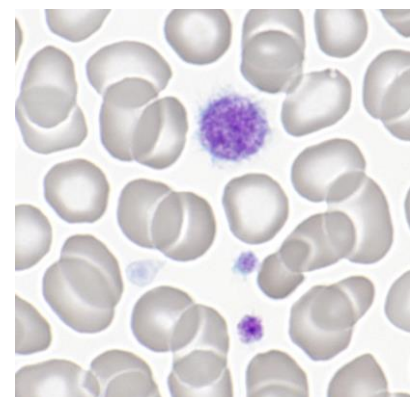


Abb 12. Platelets

## 1.7 Summary of participant results

### Leukocyte Differenzial H3-A

	0	1-4	5-9	10-19	20-29	30-39	40-49	50-59	60-69	70-79	>79
<i>Neutrophils Band</i>	2	4	14	66	54*	27	4	0	1	0	1
<i>Neutrophils Segmented.</i>	1	1	1	0	1	1	14	42	61*	42	9
<i>Eosinophils</i>	16	154*	2	1							
<i>Basophile</i>	22	144*	7								
<i>Monocytes</i>	16	138*	17	2							
<i>Lymphocytes</i>	2	35	114*	19	2	1					
<i>Plasmacells</i>	167*	6									
<i>Blasts</i>	159*	14									
<i>Promyelocytes</i>	161*	12									
<i>Myelocytes</i>	108*	63	1		1						
<i>Metamyelocyten</i>	97	75*	1								
<i>Erythrocytes Nucleated</i>	122*	51									
<i>Unknown</i>	172*	1									
<i>Smudge cells</i>	157*	13	3								

### Evaluation H3-A

	light	medium	strong		light	medium	strong
<i>Hypersegmentation</i>	14	4	2	<i>Hypochromic Ec</i>	49*	22	3
<i>Pelger-Huet Anomaly</i>	4			<i>Polychromatic Ec</i>	89*	28	2
<i>Coarse Granulation</i>	74*	24		<i>Anisocytes</i>	74*	54	4
<i>Basophilic Stripling</i>	31*			<i>Mikrocytes</i>	58	44*	2
<i>Vacuoles</i>	24	2		<i>Makrocytes</i>	36*	3	1
<i>Reaktive Lymphocytes</i>	22	4		<i>Megalocytes</i>	1	0	1
<i>Atypical Lymphocytes</i>	2			<i>Poikilocytosis</i>	77*	20	2
<i>Others</i>		1		<i>Ovalocytes</i>	82*	37	
				<i>Target Cells</i>	7	1	
				<i>Akanthocytes</i>	4		
<i>Anisocytosis</i>	85*	28	4	<i>Echinocytes</i>	5		3
<i>Megakaryocyte Nucleaus</i>	8	2		<i>Sickle Cells</i>	3		
<i>Granulation</i>	13	2	1	<i>Fragmentocytes</i>	9		
<i>Others</i>	8	1		<i>Spherocytes</i>	4		
				<i>Stomatocytes</i>	23*	4	
				<i>Basophilic Stripling</i>	20		
				<i>Howell-Jolly Bodies</i>	2		
				<i>Pappenheim Bodies</i>			
				<i>Others</i>	18	3	

The blood count was from a patient with polycythaemia vera..

## 1.8 Qualab Codes

Summary of the participant codes  
(Bold printed: expected codes)

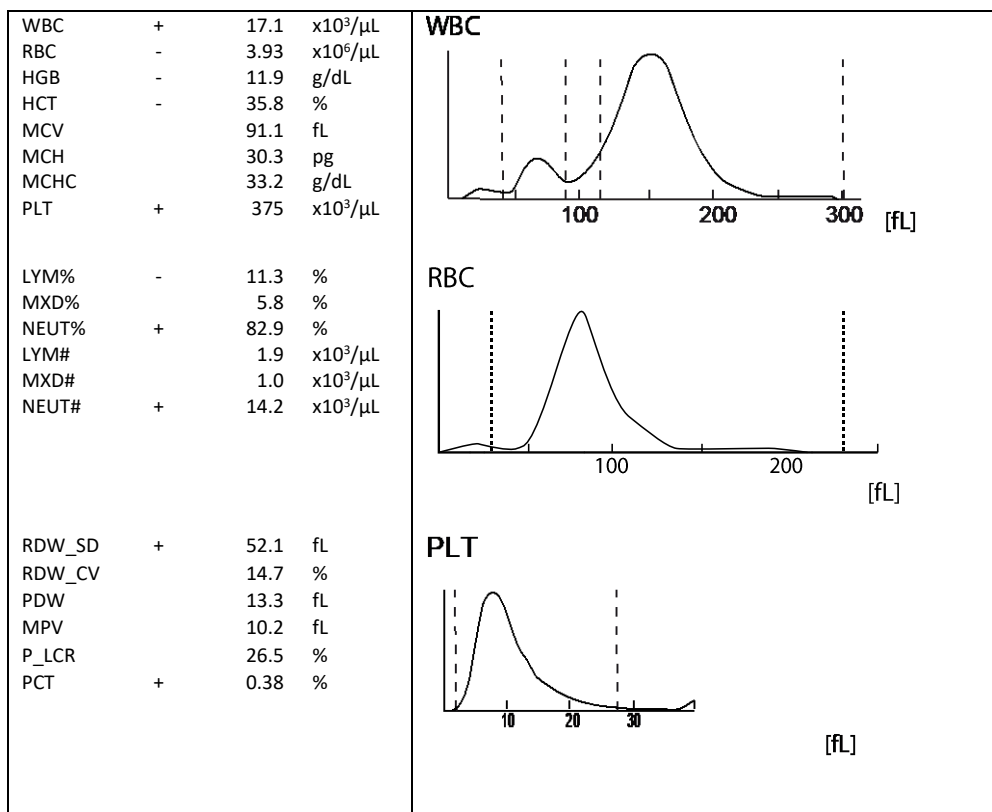
Code	Text	Number
<b>30</b>	<b>Pathologic findings, refer to expert</b>	<b>81</b>
<b>2</b>	<b>Neutrophils, left shift</b>	<b>76</b>
<b>12</b>	<b>Microcytes</b>	<b>68</b>
<b>31</b>	<b>Pathologic findings</b>	<b>67</b>
17	Elliptocytes/Ovalocytes	55
15	Polychromatophilic Red Cells	49
14	Hypochromic Erythrocytes	43
<b>4</b>	<b>Neutrophils, Toxic Changes</b>	<b>39</b>
9	Macrothrombocytes	35
16	Poikilocytosis	33
26	Teardrops	22
5	Atypical lymphocytes, probably reactive	12
29	Normal findings	11
27	Erythrocytes, other	10
18	Stomatocytes	8
13	Macrocytes	7
25	Basophilic strippling	7
1	Neutrophils, hypersegmentation of nucleus	6
11	Thrombocytes, others	5
8	Leucocytes other:	4
19	Targetcells	3
3	Pelger Hüet Anomaly	2
10	Thrombocyte aggregates	2
20	Fragmentocytes	1
21	Spherocytes	1
22	Rouleaux	1
24	Howell-Jolly bodies	1
<b>99</b>	<b>Total</b>	<b>173</b>

## 2 Sample B

### 2.1 Sysmex XP300



#### Findings MQ 2023-1 H3B 60 year old woman



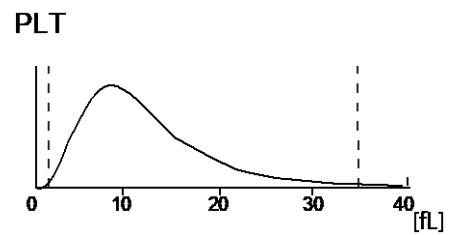
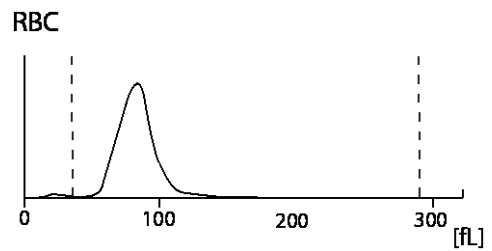
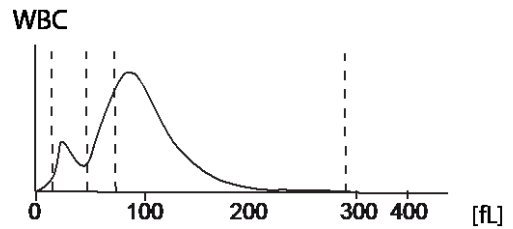
## 2.2 Zybio Z3 CRP



### Befund MQ 2023-1 H3B

Frau, 60 Jahre

WBC	16.75	↑	10 <sup>3</sup> /μl	3.50-9.50
Lym#	2.14		10 <sup>3</sup> /μl	1.10-3.20
Mid#	1.21		10 <sup>3</sup> /μl	0.10-3.20
Gran#	13.40	↑	10 <sup>3</sup> /μl	1.80-6.30
LYM%	12.8	↓	%	20.0-50.0
Mid%	7.2		%	3.0-15.0
GRA%	80.0	↑	%	40.0-75.0
RBC	3.94		10 <sup>6</sup> /μl	3.80-5.80
HGB	12.8		g/dl	11.5-17.5
HCT	33.4	↓	%	35.0-50.0
MCV	84.8		fl	82.0-100.0
MCH	32.5		pg	27.0-34.0
MCHC	38.4	↑	g/dl	31.6-35.4
RDW-CV	14.5		%	11.5-16.0
RDW-SD	41.9		fL	35.0-56.0
PLT	373	↑	10 <sup>3</sup> /μl	125-350
MPV	10.7		fl	6.5-12.0
PDW	16.1		fL	9.0-17.0
PCT	0.399	↑	%	0.108-0.282
P-LCC	112	↑	10 <sup>3</sup> /μl	30-90
P-LCR	30.0		%	11.0-45.0





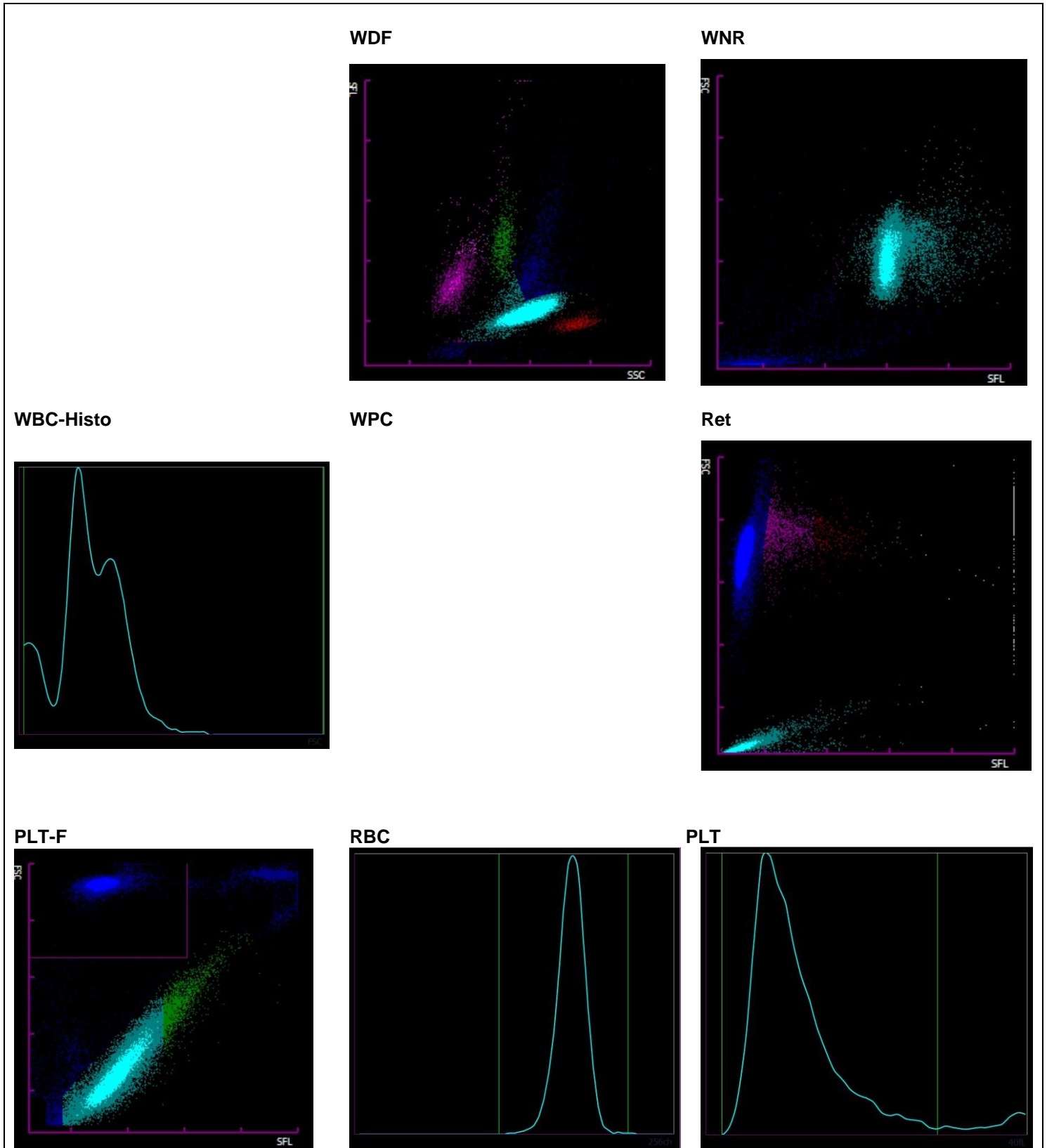
## 2.3 Sysmex XN-20



### Findings HAD MQ 2022-4 H3B 60 year old woman

Analysis	Result	Unit	Reference value
<b>Blood Count</b>			
Hemoglobin	123	g/l	117-153
Hematocrit	0.347	l/l	0.35-0.46
Erythrocytes	4.01	T/l	3.9-5.2
MCV	86.5	fl	80-100
MCH	30.7	pg	26-34
MCHC	354	g/l	310-360
Thrombocytes	* 413	G/l	143-400
Leucocytes	* 18.0	G/l	3.0-9.6
<b>Leucocyte Differentiation</b>			
Neutrophils	* 13.78	G/l	1.40-8.00
Monocytes	0.68	G/l	0.16-0.95
Eosinophils	0.50	G/l	0.00-0.70
Basophils	0.05	G/l	0.00-0.15
Lymphocytes	1.82	G/l	1.50-4.00
IG abs.	* 1.17	G/l	0.00-0.03
IG %	* 6.5	%	0.0-0.5
NRBC abs.	0.03	G/l	
NRBC	0.2	/100 Lc	

Findings HAD MQ 2023-1 H3B

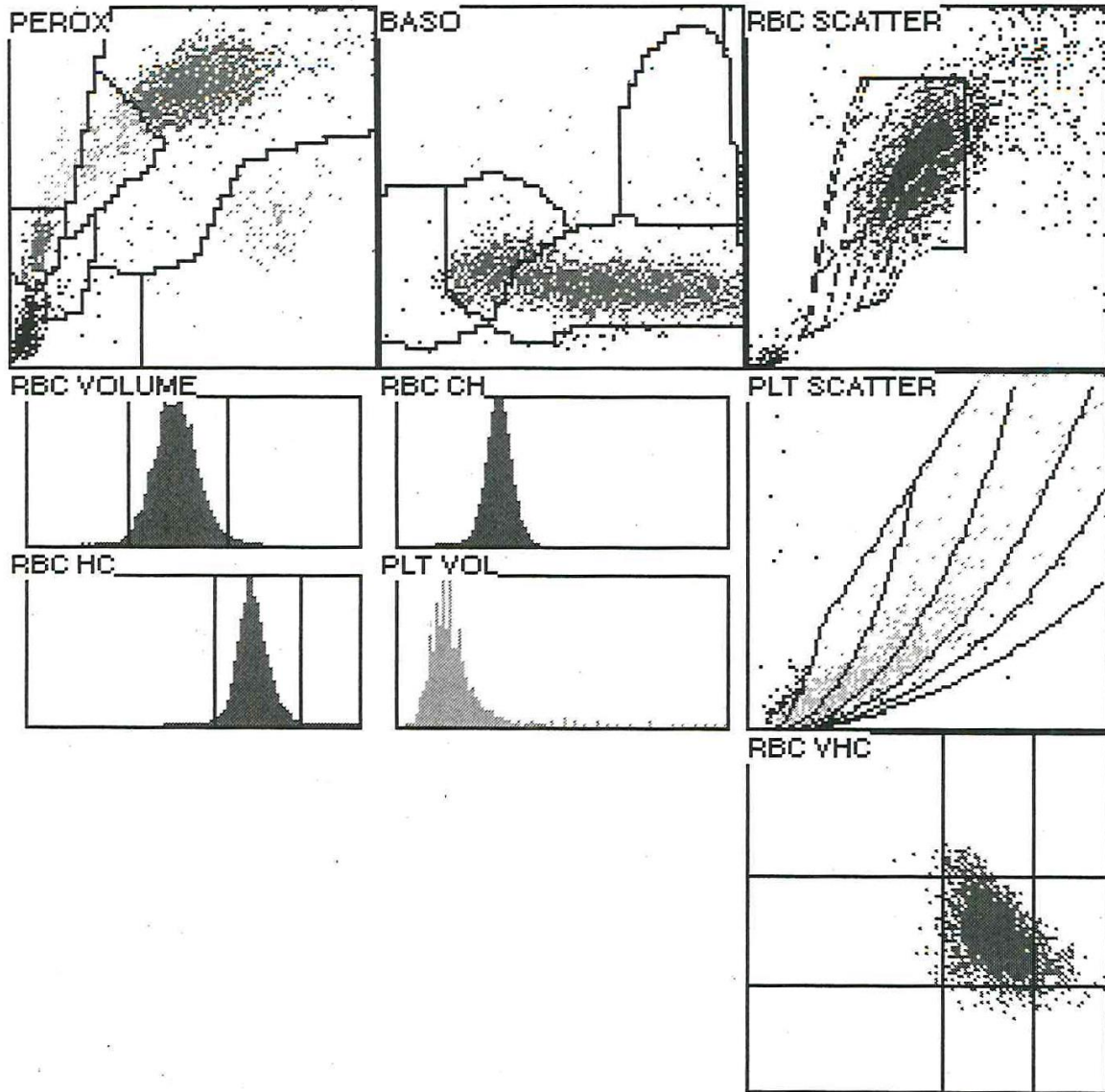


## 2.4 ADVIA 2120



### Findings HAD MQ 2023-1 H3B 60 year old woman

Analysis	Result	Unit	Reference value
<b>Blood Count</b>			
Hemoglobin	127	g/l	117-153
Hematocrit	0.377	l/l	0.35-0.46
Erythrocytes	4.20	T/l	3.9-5.2
MCV	89.8	fl	80-100
MCH	30.2	pg	26-34
MCHC	336	g/l	310-360
Mikrocytes	0.8	%	0-2.0
Makrocytes	1.2	%	0-2.0
Hypochromic Ec	0.8	%	0-2.0
Hyerchromic Ec	1.0	%	0-2.0
RDW	14.4	%	11.0-0-14.8
Thrombocytes	336	G/l	143-400
Leukocytes	* 18.04	G/l	3.0-9.6
<b>Leucocytes Differentiation</b>			
Neutrophils	* 14.69	G/l	1.40-8.00
Monocytes	0.80	G/l	0.16-0.95
Eosinophils	0.50	G/l	0.00-0.70
Basophils	0.06	G/l	0.00-0.15
Lymphocytes	1.77	G/l	1.50-4.00
LUC	0.21	%	0.0-4.0



## 2.5 Differential Blood Smear

### Findings HAD MQ 2023-1 H3B

60 year old man

Analysis		Result	Unit	Reference value
<b>Leucocytes Differentiation</b>				
Neutrophils total	*	15.42	G/l	1.40-8.00
Monocytes		0.36	G/l	0.16-0.95
Eosinophils		0.18	G/l	0.00-0.70
Basophils		0.00	G/l	0.00-0.15
Lymphocytes		1.53	G/l	1.50-4.00
Neutrophils total		0.0	%	40.0-74.0
Neutrophils Band	*	85.5	%	0.0-20.0
Neutrophils Segmented		8.0	%	30.0-50.0
Monocytes	*	77.5	%	3.4-9.0
Eosinophils	*	2.0	%	0.0-7.0
Basophils		1.0	%	0.0-1.5
Lymphocytes		0.0	%	19.0-48.0
Plasmacells	*	8.5	%	0-0.5
Blasts		0.0	%	0
Promyelocytes		0.0	%	0
Myelocytes		0.0	%	0
Metamyelocytes	*	1.0	%	0
Others/ damaged cells	*	2.0	%	0

### Commentary

Washout of a few slightly maturation-dissociated myeloid precursors, no blasts detectable. Neutrophil granulocytes with slightly pyknotic, partly highly segmented nuclei, coarsened cytoplasmic granulation, fine basophilic streaks and a few with cytoplasmic vacuoles. Normochromic, slightly anisocytic red blood count with few microcytes. Marked poikilocytosis with markedly many echinocytes (EDTA artefact). Slight anisocytosis of hypogranulated platelets, many large forms detectable.

Dr.J.-D. Studt/ Prof. Dr. S. Balabanov

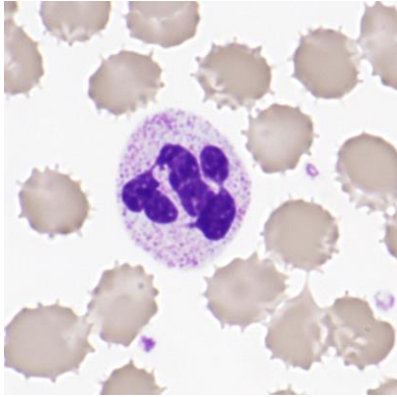


Abb 1. Neutrophil (Seg)

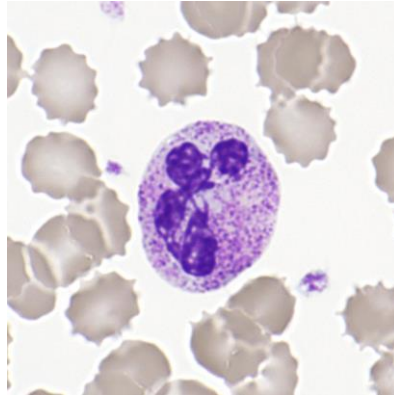


Abb 2. Neutrophil (Seg)

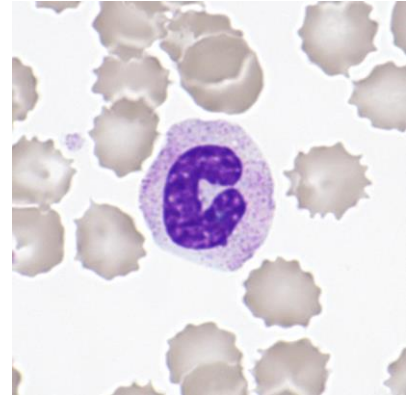


Abb 3. Neutrophil (Band)

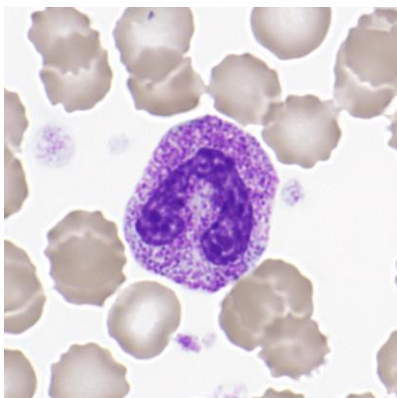


Abb 4. Neutrophil(Band)

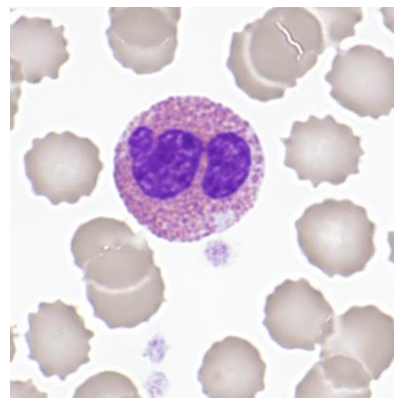


Abb 5. Eosinophile

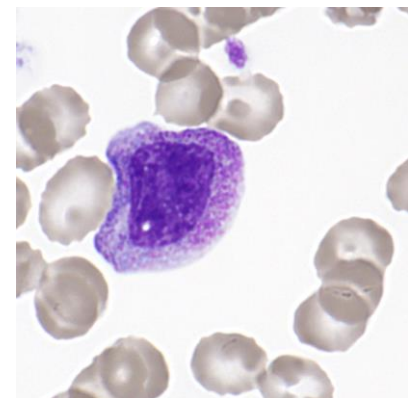


Abb 6. Myelocyte

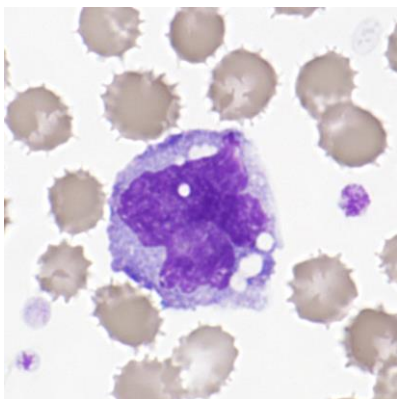


Abb 7. Monocyte

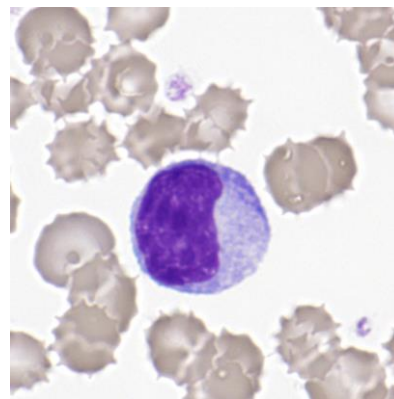


Abb 8. Lymphocyte

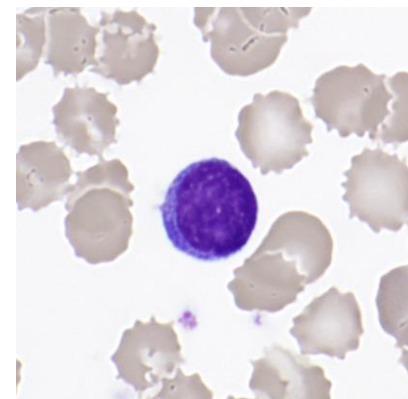


Abb 9. Lymphocyte

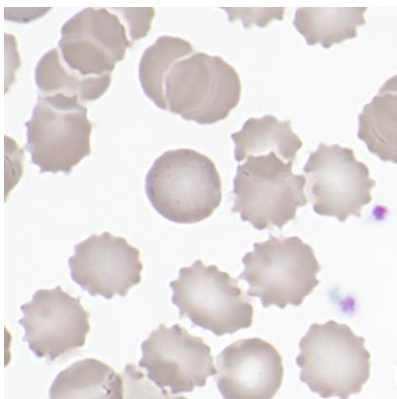


Abb 10. Ec

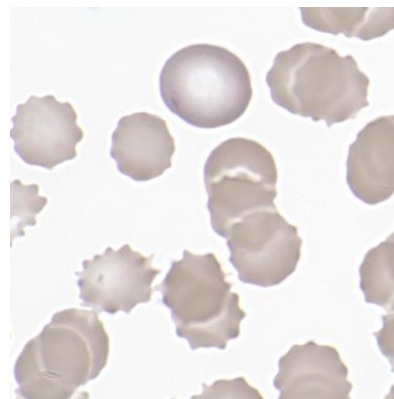


Abb 11. Ec, Anisozytose

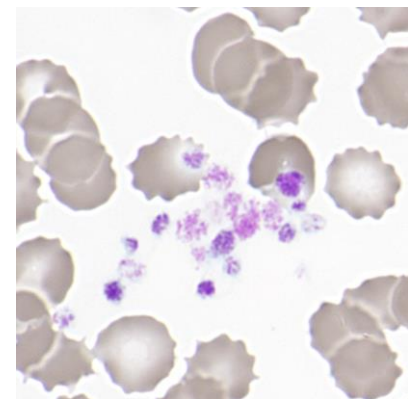


Abb 12. Platelets

## 2.6 Summary of participant results

### Leukocyte Differential H3-B

	<1	1-4	5-9	10-19	20-29	30-39	40-49	50-59	60-69	70-79	>79
<i>Neutrophils Band</i>	4	48	67*	39	9	2	1	0	1	0	1
<i>Neutrophils Segmented.</i>	3	1	0	0		3	4	8	32	96*	25
<i>Eosinophils</i>	11	145*	13	3							
<i>Basophile</i>	158*	13	1								
<i>Monocytes</i>	7	130*	34	1							
<i>Lymphocytes</i>	2	1	41*	120	7	1					
<i>Plasmacells</i>	169*	3									
<i>Blasts</i>	170*	2									
<i>Promyelocytes</i>	167*	5									
<i>Myelocytes</i>	121	51*									
<i>Metamyelozyten</i>	128	44*									
<i>Erythrocytes Nucleated</i>	165*	7									
<i>Unknown</i>	168*	4									
<i>Smudge cells</i>	154*	11	5	2							

### Evaluation H3-B

	light	medium	strong		light	medium	strong
<i>Hypersegmentation</i>	45*	18	5	<i>Hypochromic Ec</i>	19	3	
<i>Pelger-Hüet Anomaly</i>	7	1		<i>Polychromatic Ec</i>	27	2	
<i>Coarse Granulation</i>	69*	39	5	<i>Anisocytes</i>	75*	19	
<i>Basophilic Stripling</i>	15*			<i>Mikrocytes</i>	41*	5	1
<i>Vacuoles</i>	32*			<i>Makrocytes</i>	23	3	1
<i>Atypical Lymph, reactive</i>	21	6		<i>Megalocytes</i>	2	2	
<i>Atypical Lymph, neoplastic</i>	5	1		<i>Poikilocytosis</i>	30	14	4*
<i>Others</i>	1	0		<i>Ovalocytes</i>	9		
				<i>Target Cells</i>	1		1
				<i>Akanthocytes</i>	21	16	15
<i>Anisocytosis</i>	78*	23	2	<i>Echinocytes</i>	9	46	72*
<i>Megakaryocyte Nucleaus</i>	8	1		<i>Sickle Cells</i>	0		
<i>Granulation</i>	15	3		<i>Fragmentocytes</i>	11		
<i>Others</i>	8	1		<i>Spherocytes</i>	9		1
				<i>Stomatocytes</i>	1		
				<i>Basophilic Stripling</i>	8	2	
				<i>Howell-Jolly Bodies</i>	5	4	2
				<i>Pappenheim Bodies</i>	2		
				<i>Others</i>	2	1	1

The blood came from a woman with anemia and a left shift.

## 2.7 Qualab Codes

Summary of the participant codes  
(Bold printed: expected codes)

Code	Text	Number
<b>30</b>	<b>Pathologic findings, refer to expert</b>	<b>82</b>
27	Erythrocytes, other	80
<b>31</b>	<b>Pathologic findings</b>	<b>68</b>
<b>4</b>	<b>Neutrophils, Toxic Changes</b>	<b>58</b>
<b>1</b>	<b>Neutrophils, hypersegmentation of nucleus</b>	<b>47</b>
<b>16</b>	<b>Poikilocytosis</b>	<b>31</b>
<b>2</b>	<b>Neutrophils, left shift</b>	<b>24</b>
9	Macrothrombocytes	21
10	Thrombocyte aggregates	16
12	Microcytes	16
29	Normal findings	16
5	Atypical lymphocytes, probably reactive	13
15	Polychromatophilic Red Cells	13
11	Thrombocytes, others	12
22	Rouleaux	10
14	Hypochromic Erythrocytes	9
8	Leucocytes other:	7
13	Macrocytes	7
24	Howell-Jolly bodies	6
20	Fragmentocytes	5
21	Spherocytes	5
6	Atypical lymphocytes, probably neoplastic	3
3	Pelger Hüet Anomaly	2
17	Elliptocytes/Ovalocytes	2
25	Basophilic strippling	2
23	Erythrocytes agglutination	1
26	Teardrops	1
<b>99</b>	<b>Total</b>	<b>173</b>